

Adjustable Latches screw-on holes covered Style A

Item description/product images

METRIC Parts



Description

Material:

Steel or stainless steel 1.4301 (AISI 304 equivalent).

Version:

Steel trivalent blue passivated.

Stainless steel bright.

Note:

Adjustable latches are secure locking systems for industrial applications. By exceeding the dead center they resist vibration.

After the hook is engaged with the catch plate, the parts to be locked can be drawn together by up to 5 mm by pushing the lever down.

To compensate for tolerances or to create enough tension, the hook length can be adjusted using the M5 threaded spindle.

The latches can be screwed down or riveted.

Any catch plate can be combined with any latch.

Order required catch plate version separately.

The retaining force F1 applies to the latch, not the catch plate.

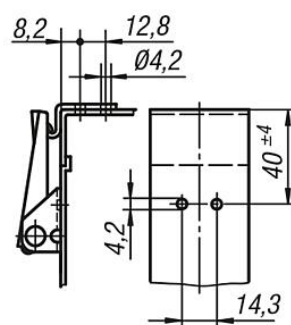
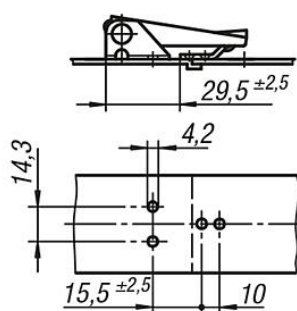
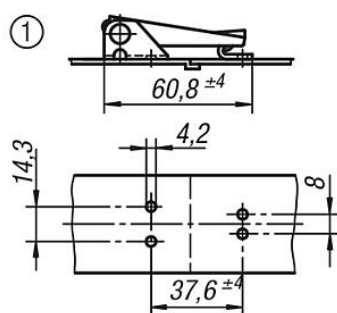
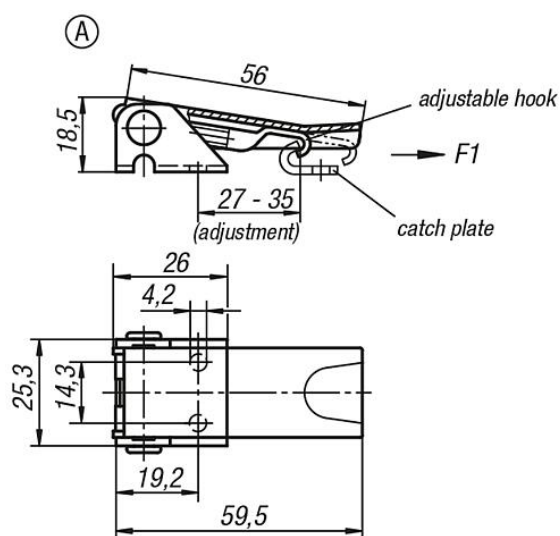
Drawing reference:

Style A: standard

1) Hole arrangements for assembly with catch plate

Adjustable Latches screw-on holes covered Style A

Drawings



Order No. steel	Order No. stainless steel	style	Retaining force F1 N
K0047.1420601	K0047.1420602	A	1000