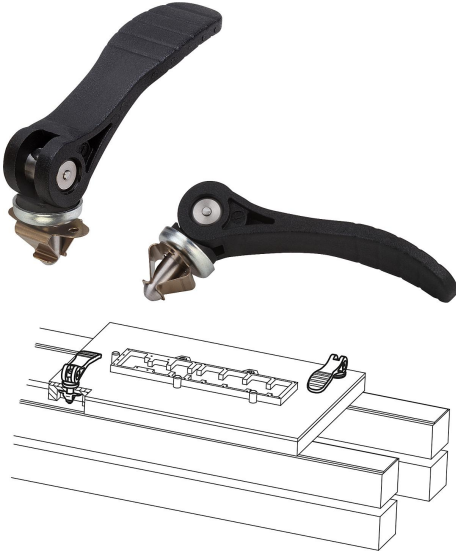


Cam levers with quick lock

Item description/product images

METRIC Parts



Description

Material:

Handle and thrust washer fiberglass reinforced plastic PA66.
Hinge pin stainless steel 1.4305 (AISI 303 equivalent).
Locking pin steel 1.0718.
Spring clip stainless steel 1.4310 (AISI 301 equivalent).

Version:

Handle and thrust washer black.
Hinge pin bright.
Locking pin trivalent blue passivated.
Spring clip passivated.

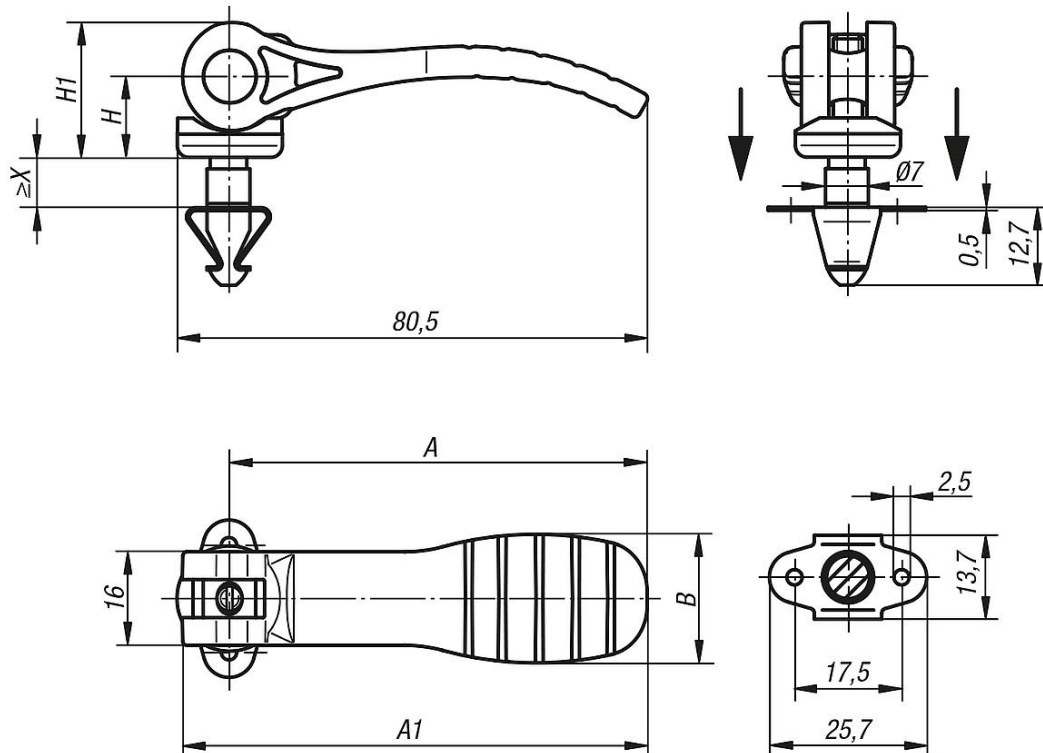
Note:

A sheet metal element can be positioned by engaging the spring clip. The sheet metal element is then clamped using the handle.
Plastics are subject to creeping under load (retardation), this can cause reduced clamping force.

On request:

Additional spring clips.

Drawings



Cam Levers with quick lock, metric

Cam levers with quick lock

Item No.	A	A1	B	H	H1	X Material thickness	Clamping force ca. N
K0751.121107X2	71,5	79,6	22	14	23,4	1,9 - 2,3	500
K0751.121107X4	71,5	79,6	22	14	23,4	3,9 - 4,3	500
K0751.121107X6	71,5	79,6	22	14	23,4	5,9 - 6,3	500
K0751.121107X8	71,5	79,6	22	14	23,4	7,9 - 8,3	500