

Pull handles stainless steel, oval with thru hole

Item description/product images



Description

Product description:

These pull handles are extremely robust and can be used where rough usage is expected and corrosion resistance required.

Material:

Stainless steel 1.4308 (AISI "316" equivalent) or 1.4404 (AISI 316L equivalent).

Version:

Polished or blasted.

Application:

Machine and plant construction, toolmaking, foodstuff industry, rehabilitation and medical technology

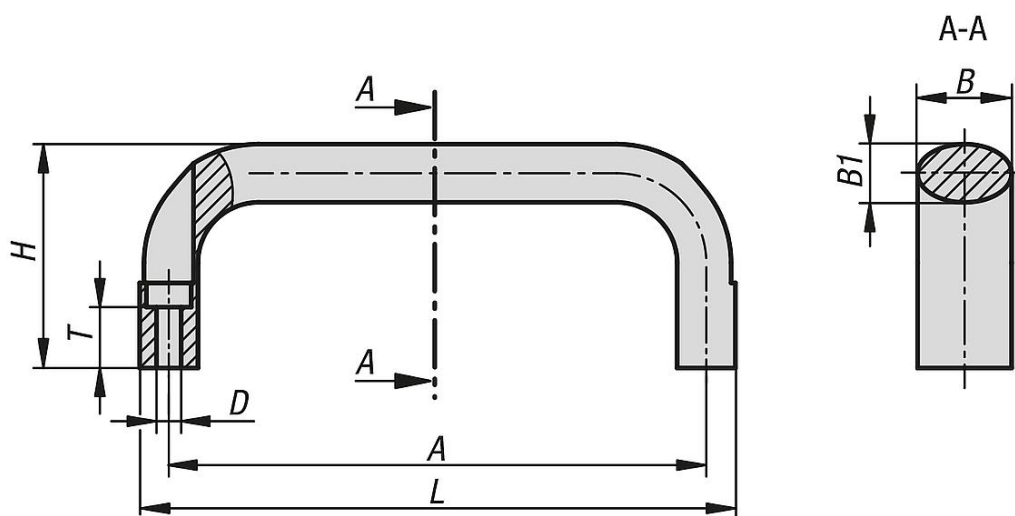
Assembly:

From the front.

Accessory:

Socket head screws DIN 912 / DIN EN ISO 4762-M5.

Drawings



Pull handles stainless steel, oval with thru hole

Order No.	Steel code	Surface finish body	A	B	B1	D	H	L	T	Load capacity N
K1640.1100160051	1.4308	blasted	100	21	13	5,5	50	113	13,6	1000
K1640.1112160051	1.4308	blasted	112	21	13	5,5	50	125	13,6	1000
K1640.1120160051	1.4308	blasted	120	21	13	5,5	50	133	13,6	1000
K1640.1128160051	1.4308	blasted	128	21	13	5,5	50	141	13,6	1000
K1640.1160160051	1.4308	blasted	160	21	13	5,5	50	173	13,6	1000
K1640.1100161051	1.4308	polished	100	21	13	5,5	50	113	13,6	1000
K1640.1112161051	1.4308	polished	112	21	13	5,5	50	125	13,6	1000
K1640.1120161051	1.4308	polished	120	21	13	5,5	50	133	13,6	1000

Pull handles stainless steel, oval with thru hole

Order No.	Steel code	Surface finish body	A	B	B1	D	H	L	T	Load capacity N
K1640.1128161051	1.4308	polished	128	21	13	5,5	50	141	13,6	1000
K1640.1160161051	1.4308	polished	160	21	13	5,5	50	173	13,6	1000
K1640.1100160052	1.4404	blasted	100	21	13	5,5	50	113	13,6	1000
K1640.1112160052	1.4404	blasted	112	21	13	5,5	50	125	13,6	1000
K1640.1120160052	1.4404	blasted	120	21	13	5,5	50	133	13,6	1000
K1640.1128160052	1.4404	blasted	128	21	13	5,5	50	141	13,6	1000
K1640.1160160052	1.4404	blasted	160	21	13	5,5	50	173	13,6	1000
K1640.1100161052	1.4404	polished	100	21	13	5,5	50	113	13,6	1000
K1640.1112161052	1.4404	polished	112	21	13	5,5	50	125	13,6	1000
K1640.1120161052	1.4404	polished	120	21	13	5,5	50	133	13,6	1000
K1640.1128161052	1.4404	polished	128	21	13	5,5	50	141	13,6	1000
K1640.1160161052	1.4404	polished	160	21	13	5,5	50	173	13,6	1000