

## Mushroom knobs biopolymer internal thread

### Item description/product images



### Description

#### Material:

Biopolymer wood fibre reinforced, natural beech.  
Biopolymer fiberglass reinforced, black gray.  
Bushing stainless steel 1.4305.

#### Version:

Natural beech with wood fiber optic or colored black gray.  
bushing bright stainless steel.

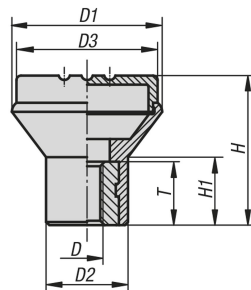
#### Note:

Good mechanical strength (tested to a minimum of 2x safety factor).  
Good chemical resistance.  
Suitable for outdoor use (weather resistant).

#### Benefits:

This biopolymer is manufactured entirely from renewable raw materials (oil free).  
Good CO<sub>2</sub> impact compared to petroleum-based plastics.  
Conservation of finite fossil resources.  
The wood fibers originate 100% from local, sustainably managed forests in Germany.  
Biopolymer is suitable for recycling (comparable to thermoplastics).

### Drawings



Order No.	Main color	Size	D	D1	D2	D3	H	H1	T
K0251.10005143	natural beech	1	M5	21	12	19	21	10	10
K0251.10006143	natural beech	2	M6	25	14	23	25	12	10
K0251.10008143	natural beech	3	M8	33	18	31	33	15	14
K0251.1000590	black gray RAL 7021	1	M5	21	12	19	21	10	10
K0251.1000690	black gray RAL 7021	2	M6	25	14	23	25	12	10
K0251.1000890	black gray RAL 7021	3	M8	33	18	31	33	15	14