

Slotted round nuts, steel or stainless steel, DIN 981

Item description/product images



Description

Material:

Steel.
Stainless steel A2.

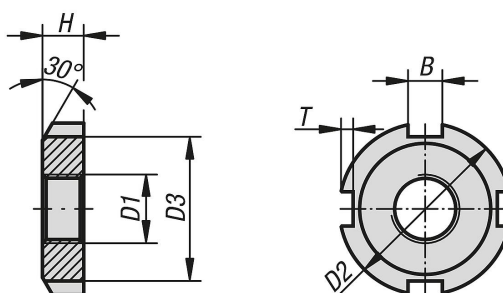
Version:

Stainless steel, bright.
Steel, bright.
Steel electro zinc-plated.

Note:

The slotted round nuts are mainly used to fasten bearings to a shaft.
The slotted round nuts can also be used to secure gear wheels, pulleys and other machine components.

Drawings



Slotted round nuts, steel or stainless steel, DIN 981

Order No.	Main material	Surface finish body	D1	D2	D3	H	B=Slot width	T
K2060.0010	steel	bright	M10x0,75	18	13,5	4	3	2
K2060.0012	steel	bright	M12x1	22	17	4	3	2
K2060.0015	steel	bright	M15x1	25	21	5	4	2
K2060.0017	steel	bright	M17x1	28	24	5	4	2
K2060.0020	steel	bright	M20x1	32	26	6	4	2
K2060.0025	steel	bright	M25x1,5	38	32	7	5	2
K2060.0030	steel	bright	M30x1,5	45	38	7	5	2
K2060.0035	steel	bright	M35x1,5	52	44	8	5	2
K2060.0040	steel	bright	M40x1,5	58	50	9	6	2,5
K2060.0045	steel	bright	M45x1,5	65	56	10	6	2,5
K2060.0050	steel	bright	M50x1,5	70	61	11	6	2,5
K2060.0055	steel	bright	M55x2	75	67	11	7	3
K2060.0060	steel	bright	M60x2	80	73	11	7	3
K2060.0065	steel	bright	M65x2	85	79	12	7	3
K2060.0070	steel	bright	M70x2	92	85	12	8	3,5
K2060.0075	steel	bright	M75x2	98	90	13	8	3,5
K2060.0080	steel	bright	M80x2	105	95	15	8	3,5
K2060.0085	steel	bright	M85x2	110	102	15	8	3,5
K2060.0090	steel	bright	M90x2	120	108	16	10	4
K2060.0095	steel	bright	M95x2	125	110	17	10	4
K2060.0100	steel	bright	M100x2	130	120	18	10	4
K2060.010	steel	electro zinc-plated	M10x0,75	18	13,5	4	3	2
K2060.012	steel	electro zinc-plated	M12x1	22	17	4	3	2

Slotted round nuts, steel or stainless steel, DIN 981

Order No.	Main material	Surface finish body	D1	D2	D3	H	B=Slot width	T
K2060.015	steel	electro zinc-plated	M15X1	25	21	5	4	2
K2060.017	steel	electro zinc-plated	M17x1	28	24	5	4	2
K2060.020	steel	electro zinc-plated	M20X1	32	26	6	4	2
K2060.025	steel	electro zinc-plated	M25X1,5	38	32	7	5	2
K2060.030	steel	electro zinc-plated	M30x1,5	45	38	7	5	2
K2060.035	steel	electro zinc-plated	M35x1,5	52	44	8	5	2
K2060.040	steel	electro zinc-plated	M40x1,5	58	50	9	6	2,5
K2060.045	steel	electro zinc-plated	M45x1,5	65	56	10	6	2,5
K2060.050	steel	electro zinc-plated	M50x1,5	70	61	11	6	2,5
K2060.055	steel	electro zinc-plated	M55x2	75	67	11	7	3
K2060.060	steel	electro zinc-plated	M60x2	80	73	11	7	3
K2060.065	steel	electro zinc-plated	M65x2	85	79	12	7	3
K2060.070	steel	electro zinc-plated	M70x2	92	85	12	8	3,5
K2060.075	steel	electro zinc-plated	M75x2	98	90	13	8	3,5
K2060.080	steel	electro zinc-plated	M80x2	105	95	15	8	3,5
K2060.085	steel	electro zinc-plated	M85x2	110	102	15	8	3,5
K2060.090	steel	electro zinc-plated	M90x2	120	108	16	10	4
K2060.095	steel	electro zinc-plated	M95x2	125	110	17	10	4
K2060.100	steel	electro zinc-plated	M100x2	130	120	18	10	4
K2060.1010	stainless steel A2	bright	M10x0,75	18	13,5	4	3	2
K2060.1012	stainless steel A2	bright	M12x1	22	17	4	3	2
K2060.1015	stainless steel A2	bright	M15X1	25	21	5	4	2
K2060.1017	stainless steel A2	bright	M17x1	28	24	5	4	2
K2060.1020	stainless steel A2	bright	M20X1	32	26	6	4	2
K2060.1025	stainless steel A2	bright	M25X1,5	38	32	7	5	2
K2060.1030	stainless steel A2	bright	M30x1,5	45	38	7	5	2
K2060.1035	stainless steel A2	bright	M35x1,5	52	44	8	5	2
K2060.1040	stainless steel A2	bright	M40x1,5	58	50	9	6	2,5
K2060.1045	stainless steel A2	bright	M45x1,5	65	56	10	6	2,5
K2060.1050	stainless steel A2	bright	M50x1,5	70	61	11	6	2,5
K2060.1055	stainless steel A2	bright	M55x2	75	67	11	7	3
K2060.1060	stainless steel A2	bright	M60x2	80	73	11	7	3
K2060.1065	stainless steel A2	bright	M65x2	85	79	12	7	3
K2060.1070	stainless steel A2	bright	M70x2	92	85	12	8	3,5
K2060.1075	stainless steel A2	bright	M75x2	98	90	13	8	3,5
K2060.1080	stainless steel A2	bright	M80x2	105	95	15	8	3,5
K2060.1085	stainless steel A2	bright	M85x2	110	102	15	8	3,5
K2060.1090	stainless steel A2	bright	M90x2	120	108	16	10	4
K2060.1095	stainless steel A2	bright	M95x2	125	110	17	10	4
K2060.1100	stainless steel A2	bright	M100x2	130	120	18	10	4