

Rod ends with plain bearing, internal thread, steel, DIN ISO 12240-1 maintenance-free

Item description/product images



Description

Material:

Housing size (D) 5-12 turned steel.
 From size (D) 16 forged steel.
 Ball joint ball bearing steel, hardened, ground and polished.
 Bearing shell steel with PTFE weave glued in.

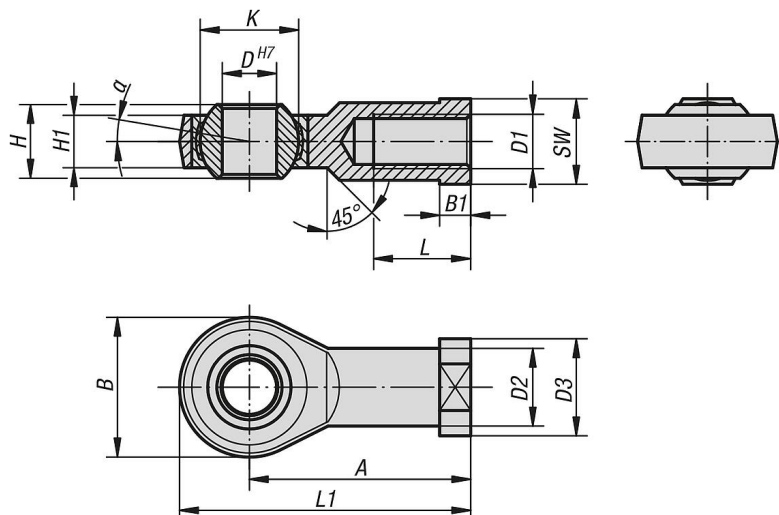
Version:

Electro zinc-plated.

Note:

The rod end bearing is maintenance-free. The connection dimensions comply with DIN 648 series KJ.

Drawings



Rod ends with plain bearing, internal thread, steel, DIN ISO 12240-1, maintenance-free

Order No.	Version 2	Main material	A	B	B1	D	D1	D2	D3	H	H1	K	L	L1	α	SW	Dynamic base loads kN	Static base loads kN
K2080.05	rh thread	free-cutting steel	27	18	4	5	M5x0,8	8,5	11	8	6	11,11	10	36	13	9	5,7	6
K2080.06	rh thread	free-cutting steel	30	20	5	6	M6x1,0	10	13	9	6,75	12,7	12	40	13	11	7,2	7,65
K2080.08	rh thread	free-cutting steel	36	24	5	8	M8x1,25	12,5	16	12	9	15,875	16	48	14	14	11,6	12,9
K2080.10	rh thread	free-cutting steel	43	28	6,5	10	M10x1,5	15	19	14	10,5	19,05	20	57	13	17	14,5	18
K2080.10125	rh thread	free-cutting steel	43	28	6,5	10	M10x1,25	15	19	14	10,5	19,05	20	57	13	17	14,5	18
K2080.12	rh thread	free-cutting steel	50	32	6,5	12	M12x1,75	17,5	22	16	12	22,225	22	66	13	19	17	24
K2080.12125	rh thread	free-cutting steel	50	32	6,5	12	M12x1,25	17,5	22	16	12	22,225	22	66	13	19	17	24
K2080.16	rh thread	carbon steel	64	42	8	16	M16x2,0	22	27	21	15	28,575	28	85	15	22	28,5	39
K2080.1615	rh thread	carbon steel	64	42	8	16	M16x1,5	22	27	21	15	28,575	28	85	15	22	28,5	39
K2080.20	rh thread	carbon steel	77	50	10	20	M20x1,5	27,5	34	25	18	34,925	33	102	14	30	42,5	57
K2080.22	rh thread	carbon steel	84	54	12	22	M22x1,5	30	38	28	20	38,10	37	11	15	32	57	68
K2080.25	rh thread	carbon steel	91	60	12	25	M24x2,0	33,5	42	31	22	42,86	42	124	15	36	68	85
K2080.30	rh thread	carbon steel	110	70	15	30	M30x2,0	40	50	37	25	50,8	51	145	17	41	88	114
K2080.35	rh thread	carbon steel	125	81	17	35	M36x2,0	46	58	43	28	57,15	56	165,5	16	50	106	142
K2080.40	rh thread	carbon steel	142	91	19	40	M42x2,0	53	65	49	33	66,67	60	187,5	16	55	125	171
K2080.051	lh thread	free-cutting steel	27	18	4	5	M5x0,8	8,5	11	8	6	11,11	10	36	13	9	5,7	6

Rod ends with plain bearing, internal thread, steel, DIN ISO 12240-1 maintenance-free

Order No.	Version 2	Main material	A	B	B1	D	D1	D2	D3	H	H1	K	L	L1	α	SW	Dynamic base loads kN	Static base loads kN
K2080.061	lh thread	free-cutting steel	30	20	5	6	M6x1,0	10	13	9	6,75	12,7	12	40	13	11	7,2	7,65
K2080.081	lh thread	free-cutting steel	36	24	5	8	M8x1,25	12,5	16	12	9	15,875	16	48	14	14	11,6	12,9
K2080.101	lh thread	free-cutting steel	43	28	6,5	10	M10x1,5	15	19	14	10,5	19,05	20	57	13	17	14,5	18
K2080.101251	lh thread	free-cutting steel	43	28	6,5	10	M10x1,25	15	19	14	10,5	19,05	20	57	13	17	14,5	18
K2080.121	lh thread	free-cutting steel	50	32	6,5	12	M12x1,75	17,5	22	16	12	22,225	22	66	13	19	17	24
K2080.121251	lh thread	free-cutting steel	50	32	6,5	12	M12x1,25	17,5	22	16	12	22,225	22	66	13	19	17	24
K2080.161	lh thread	carbon steel	64	42	8	16	M16x2,0	22	27	21	15	28,575	28	85	15	22	28,5	39
K2080.16151	lh thread	carbon steel	64	42	8	16	M16x1,5	22	27	21	15	28,575	28	85	15	22	28,5	39
K2080.201	lh thread	carbon steel	77	50	10	20	M20x1,5	27,5	34	25	18	34,925	33	102	14	30	42,5	57
K2080.221	lh thread	carbon steel	84	54	12	22	M22x1,5	30	38	28	20	38,10	37	11	15	32	57	68
K2080.251	lh thread	carbon steel	91	60	12	25	M24x2,0	33,5	42	31	22	42,86	42	124	15	36	68	85
K2080.301	lh thread	carbon steel	110	70	15	30	M30x2,0	40	50	37	25	50,8	51	145	17	41	88	114
K2080.351	lh thread	carbon steel	125	81	17	35	M36x2,0	46	58	43	28	57,15	56	165,5	16	50	106	142
K2080.401	lh thread	carbon steel	142	91	19	40	M42x2,0	53	65	49	33	66,67	60	187,5	16	55	125	171