

Adjustable handles, stainless steel with internal thread and protective cap, threaded insert stainless steel - inch

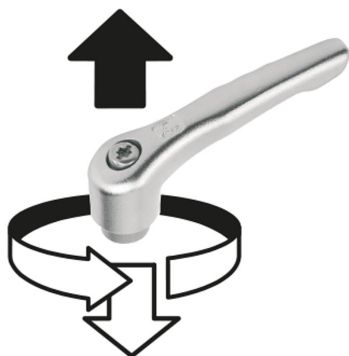
Item description/product images



INCH
Parts



lift to
disengage



Description

Material:

Handle investment cast 1.4308 (AISI "316" equivalent).
Other steel parts 1.4305 (AISI 303 equivalent).

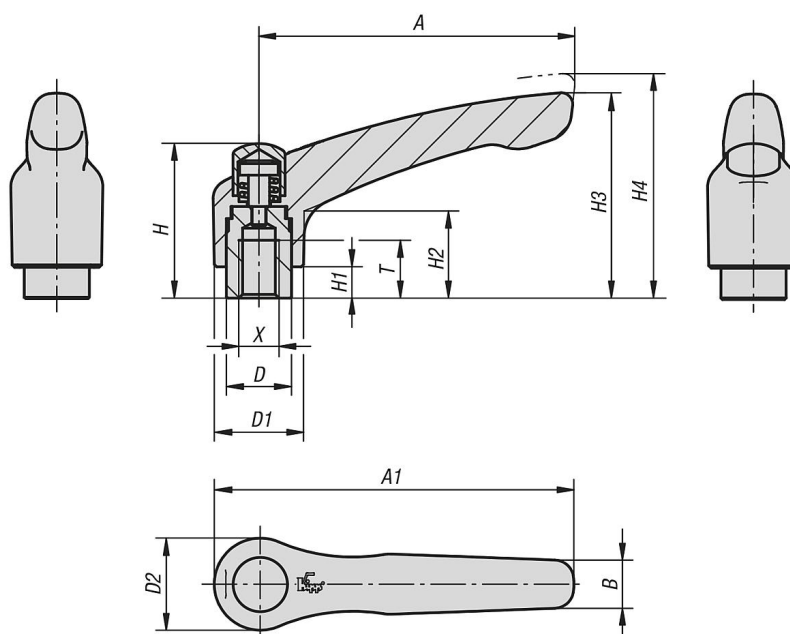
Version:

Handle electropolished.
Steel parts bright.

On request:

Other threads and special versions.
Dimension "H1" available in other lengths at extra charge.

Drawings



Adjustable handles, stainless steel with internal thread and protective cap, threaded insert stainless steel - inch**Adjustable handles with protective cap, internal thread, stainless steel**

Order No.	Size	X	T	D	D1	D2	H	H1	H2	H3	H4	A	A1	B	No. of teeth
K0124.92A2	2	1/4-20	12	13,5	18,5	19	32	6,5	17,5	42,5	45,5	65	74,5	10	10
K0124.92A3	2	5/16-18	12	13,5	18,5	19	32	6,5	17,5	42,5	45,5	65	74,5	10	10
K0124.93A3	3	5/16-18	14	16	21	22	41,5	10	24	54,5	58,5	80	91	11	11
K0124.93A4	3	3/8-16	14	16	21	22	41,5	10	24	54,5	58,5	80	91	11	11