

Indexing plungers with grip, style D - inch

Item description/product images

INCH
Parts



Description

Material:

Steel grade 5.8.

Version:

Black oxidized.

Pin hardened and ground.

Note:

Cam-action indexing plungers are used when the indexing pin should not project all the time. Turning the handle through 180° retracts the pin and a notch ensures that the handle remains in this position.

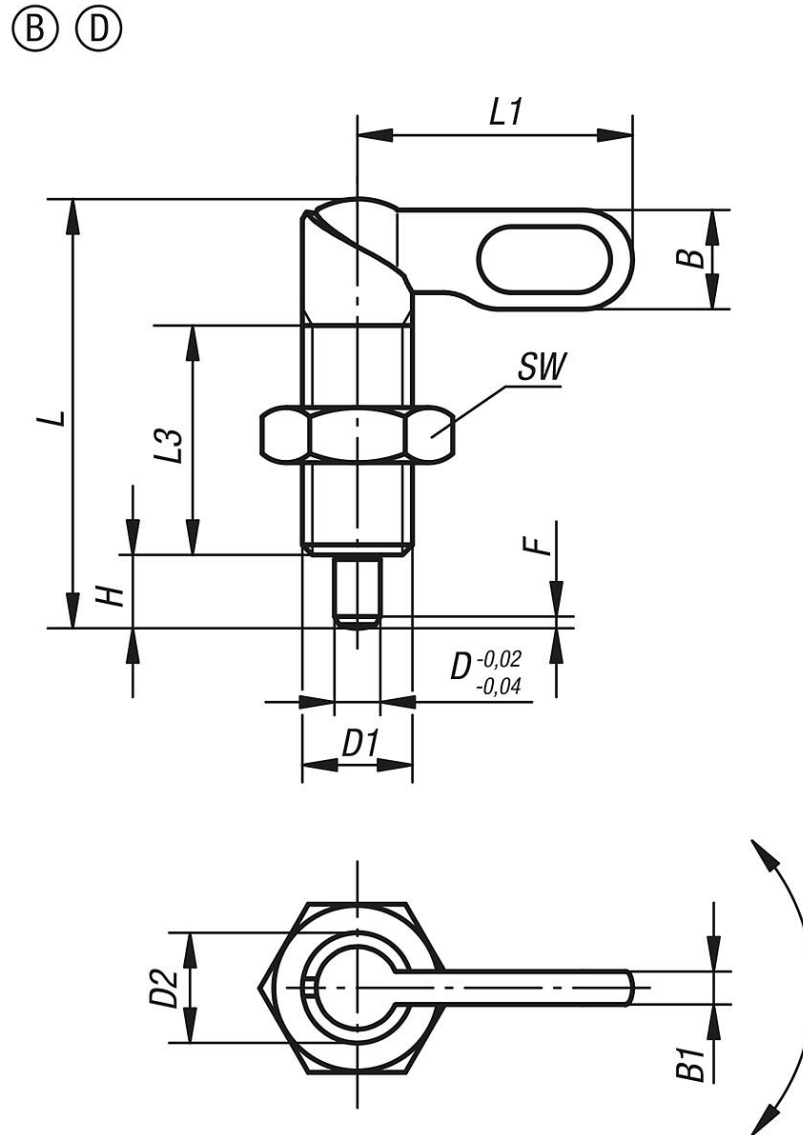
Drawing reference:

Style C: grip powder-coated without nut

Style D: grip powder-coated with nut

Indexing plungers with grip, style D - inch

Drawings



Order No.	style	D	D1	D2	L	L1	L3	B	B1	H	SW	Fx30°	Spring force initial pressure F1 approx. N	Spring force final pressure F2 approx. N
K0348.0704A4	D	4	3/8-16	10	38	25	20	9	3	6	9/16	1	8	14
K0348.0705A4	D	5	3/8-16	10	38	25	20	9	3	6	9/16	1,3	8	14
K0348.0706A4	D	6	3/8-16	10	38	25	20	9	3	6	9/16	1,8	8	14
K0348.0704AL	D	4	3/8-24	10	38	25	20	9	3	6	9/16	1	8	14
K0348.0705AL	D	5	3/8-24	10	38	25	20	9	3	6	9/16	1,3	8	14
K0348.0706AL	D	6	3/8-24	10	38	25	20	9	3	6	9/16	1,8	8	14
K0348.0705A5	D	5	1/2-13	12	46,8	30	25	10,8	3,6	8	3/4	1,3	8	15
K0348.0706A5	D	6	1/2-13	12	46,8	30	25	10,8	3,6	8	3/4	1,8	8	15
K0348.0708A5	D	8	1/2-13	12	46,8	30	25	10,8	3,6	8	3/4	2,3	8	15
K0348.0705AM	D	5	1/2-20	12	46,8	30	25	10,8	3,6	8	3/4	1,3	8	15
K0348.0706AM	D	6	1/2-20	12	46,8	30	25	10,8	3,6	8	3/4	1,8	8	15
K0348.0708AM	D	8	1/2-20	12	46,8	30	25	10,8	3,6	8	3/4	2,3	8	15
K0348.0706A6	D	6	5/8-11	16	60,4	40	32	14,4	4,8	10	15/16	1,8	15	35
K0348.0708A6	D	8	5/8-11	16	60,4	40	32	14,4	4,8	10	15/16	2,3	15	35
K0348.0710A6	D	10	5/8-11	16	60,4	40	32	14,4	4,8	10	15/16	2,8	15	35
K0348.0706AN	D	6	5/8-18	16	60,4	40	32	14,4	4,8	10	15/16	1,8	15	35
K0348.0708AN	D	8	5/8-18	16	60,4	40	32	14,4	4,8	10	15/16	2,3	15	35

Indexing plungers with grip, style D - inch

Order No.	style	D	D1	D2	L	L1	L3	B	B1	H	SW	Fx30°	Spring force initial pressure F1 approx. N	Spring force final pressure F2 approx. N
K0348.0710AN	D	10	5/8-18	16	60,4	40	32	14,4	4,8	10	1-1/8	2,8	15	35
K0348.0708A7	D	8	3/4-10	20	70	50	35	18	6	12	1-1/8	2,3	20	60
K0348.0710A7	D	10	3/4-10	20	70	50	35	18	6	12	1-1/8	2,8	20	60
K0348.0712A7	D	12	3/4-10	20	70	50	35	18	6	12	1-1/8	3	20	60
K0348.0708A0	D	8	3/4-16	20	70	50	35	18	6	12	1-1/8	2,3	20	60
K0348.0710A0	D	10	3/4-16	20	70	50	35	18	6	12	1-1/8	2,8	20	60
K0348.0712A0	D	12	3/4-16	20	70	50	35	18	6	12	1-1/8	3	20	60