

Clamp Style A

Item description/product images

METRIC Parts



Description

Material:

Steel or stainless steel 1.4301 (AISI 304 equivalent).

Version:

Steel trivalent blue passivated.

Stainless steel bright.

Note:

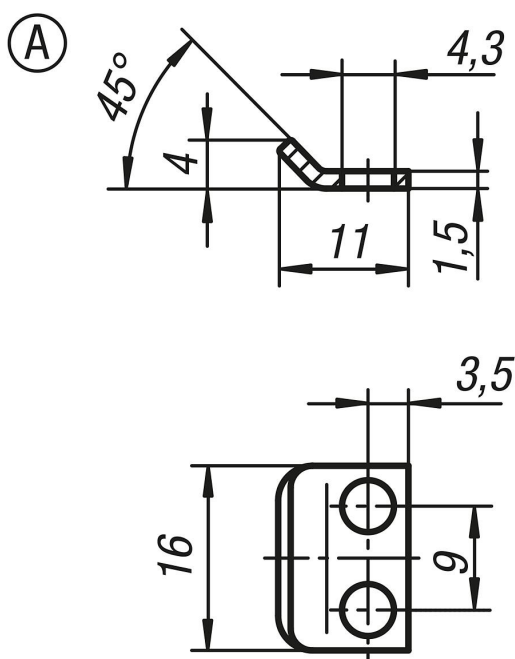
Latches with spring clips for safe holding and locking of hatches, container lids, machine cladding etc. By exceeding the dead center they resist vibration. The locking force is applied by tensioning a spring clip.

The latches can be screwed down or riveted.

Order catch plates separately.

The retaining force F1 applies to the latch, not the catch plate.

Drawings



Order No. steel	Order No. stainless steel	Style
K0043.9143111	K0043.9143112	A

