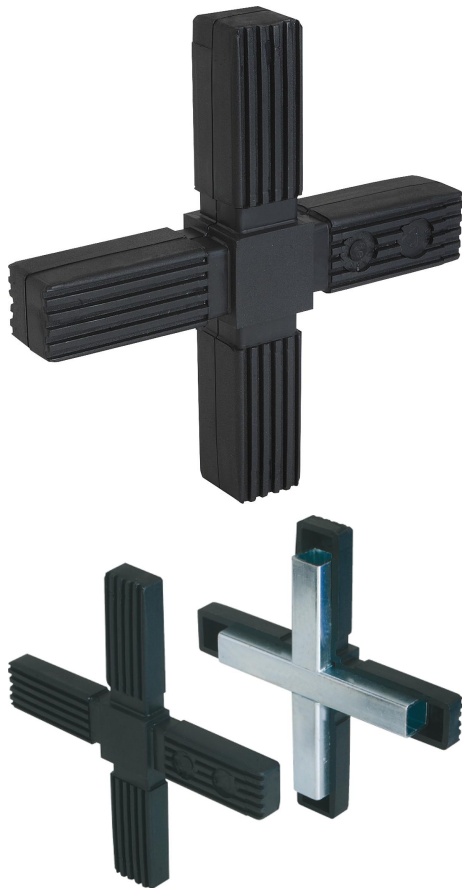


Square Tube Connectors four-way, flat

Item description/product images

METRIC Parts



Description

Material:

Polyamide PA, black.

Core electro zinc-plated steel.

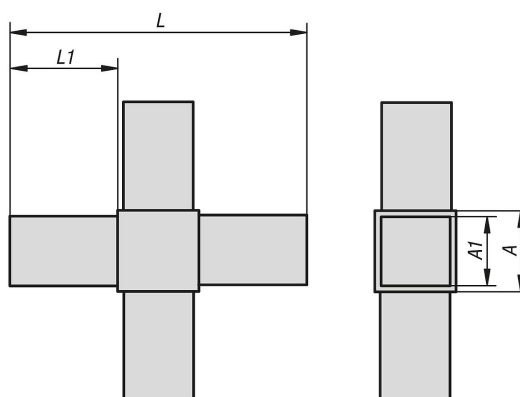
Note:

No screws required. The tube connectors are simply pushed into the appropriate square tubing. They can be dismantled and reused repeatedly.

Accessory:

- Square tubes K0627
- Finned square tubes K0628

Drawings



Square tube connectors, four-way, flat

Order No.	A	A1	L	L1	Suitable for square tubes
K0618.1201512	20	17	92	36	20 x 20 x 1,5

Square Tube Connectors four-way, flat

Order No.	A	A1	L	L1	Suitable for square tubes
K0618.1251512	25	22	133	54	25 x 25 x 1,5
K0618.1302012	30	26	124	47	30 x 30 x 2