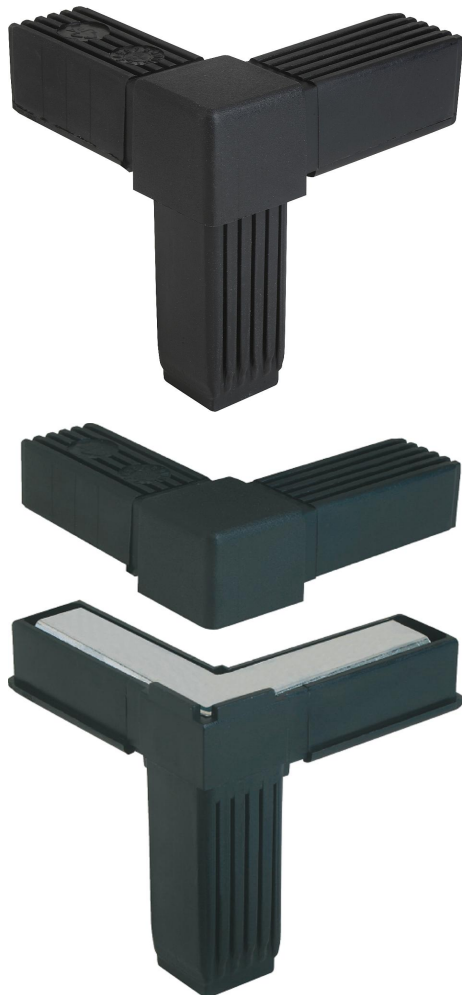


Square Tube Connectors three-way

Item description/product images

METRIC Parts



Description

Material:

Polyamide PA, black.

Core electro zinc-plated steel.

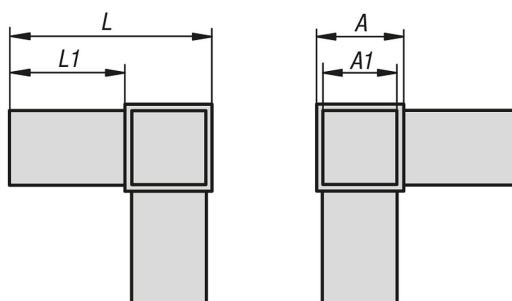
Note:

No screws required. The tube connectors are simply pushed into the appropriate square tubing. They can be dismantled and reused repeatedly.

Accessory:

- Square tubes K0627
- Finned square tubes K0628

Drawings



Square tube connector, three-way

Square Tube Connectors three-way

Order No.	A	A1	L	L1	Suitable for square tubes
K0619.1201512	20	17	56	36	20 x 20 x 1,5
K0619.1251512	25	22	73	48	25 x 25 x 1,5
K0619.1302012	30	26	77	47	30 x 30 x 2