

Adjustable handles, plastic, ergonomic, with internal thread, threaded insert stainless steel

Item description/product images



lift to
disengage



Description

Material:

Handle:

Hard components reinforced plastic, toothed ring die-cast zinc.

Soft components thermoplastic elastomer.

Steel parts:

Stainless steel, 1.4305 (AISI 303 equivalent).

Version:

Steel parts bright.

Note:

The color combinations

graphite black RAL 9011 (hard components) and

black gray RAL 7021 (soft components)

are supplied as standard.

The soft components ensure a non-slip grip of the operating part. The closed design offers sufficient protection against dirt. The design was especially developed for ergonomic gripping requirements.

The push button improves disengagement and allows the handle to be easily used.

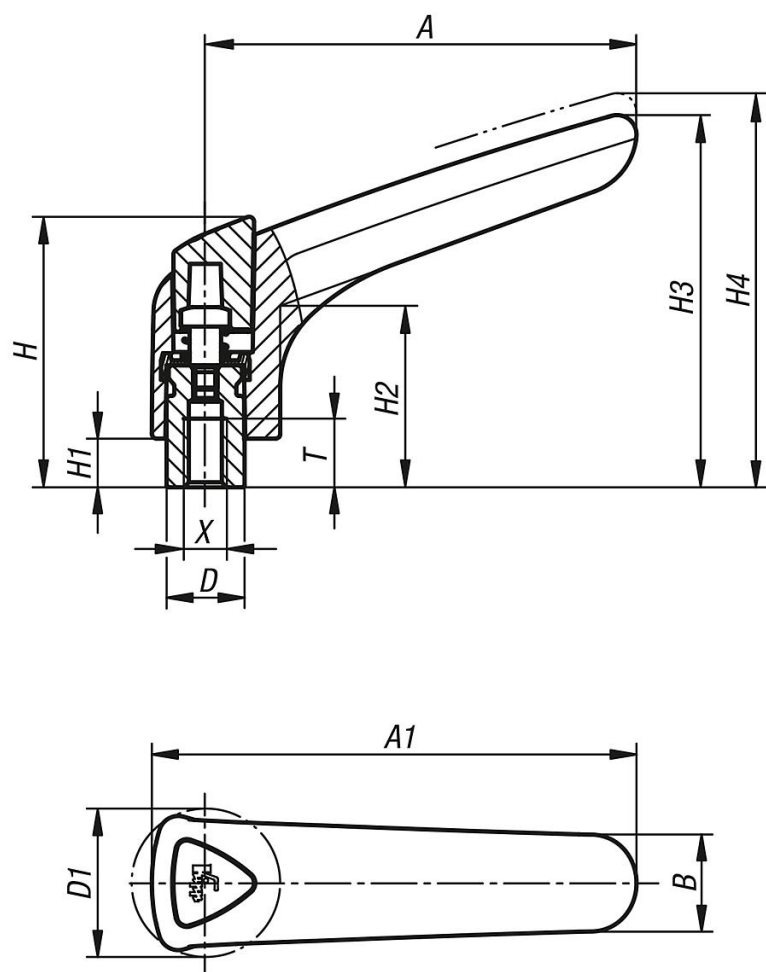
On request:

Other internal threads, colors and special versions.

Dimension "H1" available in other lengths at extra charge.

Adjustable handles, plastic, ergonomic, with internal thread, threaded insert stainless steel

Drawings



Order No.	X	T	D	D1	H	H1	H2	H3	H4	A	A1	B	No. of teeth
K0982.3101	M10	14	16	30,5	55,6	10	37,3	76,5	81	88,5	99,5	20	22
K0982.3081	M8	14	16	30,5	55,6	10	37,3	76,5	81	88,5	99,5	20	22