

## Cam screws with knife edge washer

### Item description/product images



### Description

#### Material:

Knife edge washer.  
Cam screw carbon steel.

#### Version:

Cam screw tempered to 10.9 and black oxidized.  
Knife edge washer hardened and anodized.

#### Note:

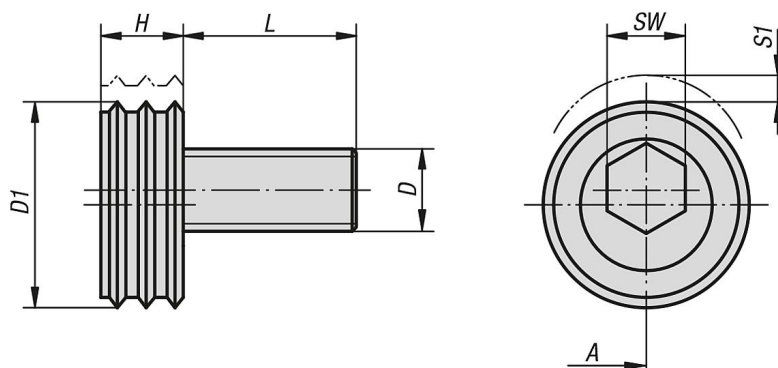
Also called knife edge clamps.  
The hardened knife edge washer is suitable for clamping rough cut stock, castings, forgings etc.

“A” = distance from workpiece to screw center (cam screw).

#### On request:

Replacement cam screws.

### Drawings



### Cam screws with knife edge washer

Order No.	A	D	D1	L	H	SW	S1 (travel)	Clamping force kN	Max. tightening torque Nm
K0025.12	12,7	M12	25,4	22,5	9,6	8	2	18	88
K0025.16	15	M16	30,1	26,8	12,7	12	2,5	27	135