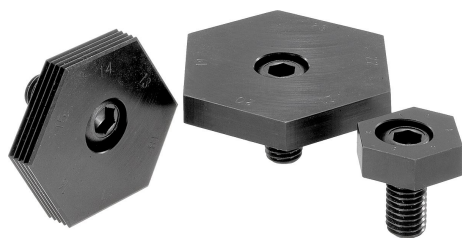


Fixture clamps unequal hexagon

Item description/product images



Description

Material:

Cam screw steel tempered to 10.9.
Hexagon washer mild steel.

Version:

Cam screw black oxidized.
Hexagon washer hardened and black oxidized.

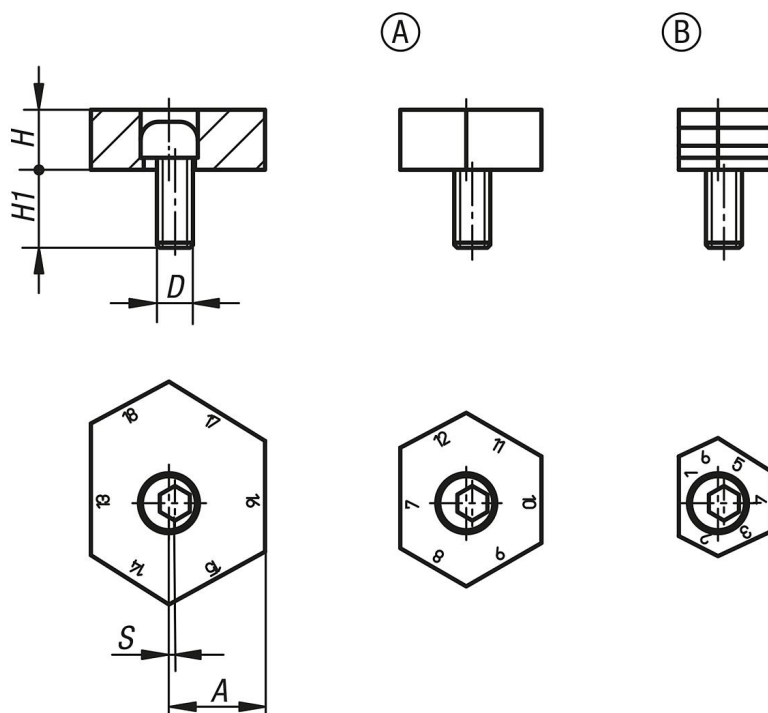
Note:

These unequal hexagon fixture clamps can minimize the cost of clamping in fixtures. The clamping range can be altered up to 17 mm from the same tapped hole. Simply rotate the hexagon washer.

On request:

Replacement cam screws.

Drawings



Fixture clamps unequal hexagon

Order No.	style	Version	Distance A by face No.	D	H	H1	S (cam travel)	Clamping force kN
K0023.09	A	smooth finish	1/12, 2/13, 3/14, 4/15, 5/16, 6/17	M12	10	22	1	18
K0023.10	A	smooth finish	7/18, 8/19, 9/20, 10/21, 11/22, 12/23	M12	10	22	1	18
K0023.11	A	smooth finish	13/24, 14/25, 15/26, 16/27, 17/28, 18/29	M12	10	22	1	18
K0023.13	B	notched finish	1/12, 2/13, 3/14, 4/15, 5/16, 6/17	M12	10	22	1	18
K0023.14	B	notched finish	7/18, 8/19, 9/20, 10/21, 11/22, 12/23	M12	10	22	1	18

Fixture clamps unequal hexagon

Order No.	style	Version	Distance A by face No.	D	H	H1	S (cam travel)	Clamping force kN
K0023.15	B	notched finish	13/24, 14/25, 15/26, 16/27, 17/28, 18/29	M12	10	22	1	18