

## Tapered bushings

### Item description/product images



### Description

#### Material:

Steel or 1.4034 (AISI 420 equivalent) stainless steel.

#### Version:

Steel version:

black oxidized, hardened and ground.

Stainless steel version:

bright, hardened and ground.

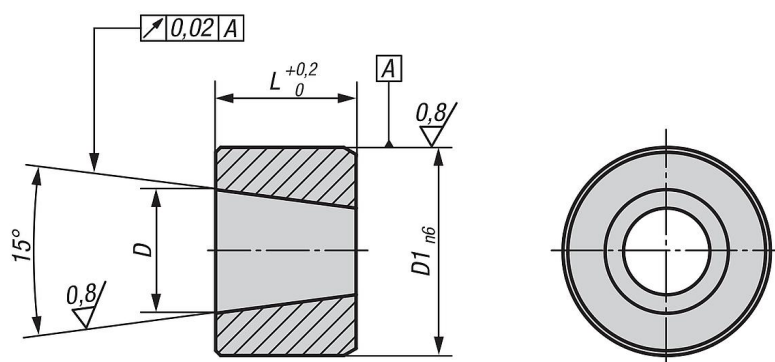
#### Note:

Matching bushing for premium indexing plungers with tapered pin K0736.

#### Assembly:

To increase the coaxial alignment accuracy, the holes for the bushing and the premium indexing plunger can be machined simultaneously.

### Drawings



### Tapered bushings

Item No.	Main material	D	D1	L
K0736.9105	steel	5	8	6
K0736.9106	steel	6	10	7
K0736.9108	steel	8	13,5	9,5
K0736.9110	steel	10	17	11,5
K0736.91005	stainless steel	5	8	6
K0736.91006	stainless steel	6	10	7
K0736.91008	stainless steel	8	13,5	9,5
K0736.91010	stainless steel	10	17	11,5