

## Slot nuts twist-in Type B

### Item description/product images



### Description

**Material:**

Steel.

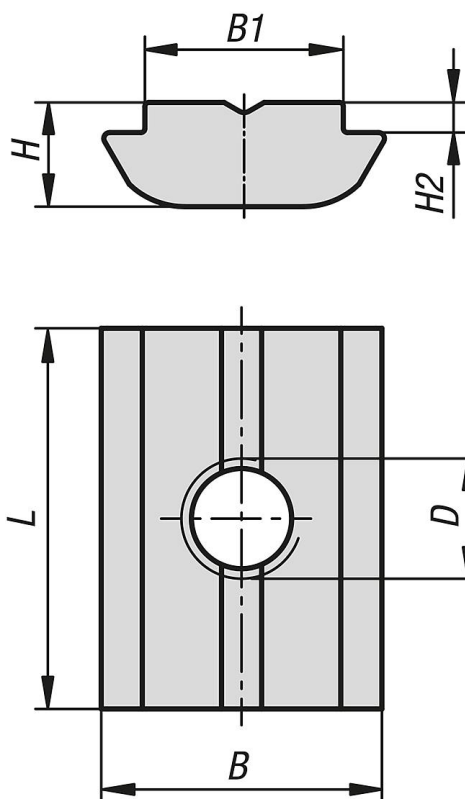
**Version:**

Electro zinc-plated.

**Note:**

The slot nut is twisted into the profile slot and so can be subsequently inserted into existing systems.

### Drawings



| Order No.  | Slot width | B    | B1  | D  | H   | H2  | L  |
|------------|------------|------|-----|----|-----|-----|----|
| K1026.0804 | 8          | 11,6 | 7,9 | M4 | 4,6 | 1   | 16 |
| K1026.0805 | 8          | 11,6 | 7,9 | M5 | 4,6 | 1   | 16 |
| K1026.0806 | 8          | 11,6 | 7,9 | M6 | 4,6 | 1   | 16 |
| K1026.0808 | 8          | 11,6 | 7,9 | M8 | 4,6 | 1   | 16 |
| K1026.1004 | 10         | 14   | 9,9 | M4 | 5,2 | 1,5 | 19 |
| K1026.1005 | 10         | 14   | 9,9 | M5 | 5,2 | 1,5 | 19 |
| K1026.1006 | 10         | 14   | 9,9 | M6 | 5,2 | 1,5 | 19 |
| K1026.1008 | 10         | 14   | 9,9 | M8 | 5,2 | 1,5 | 19 |

