

## Magnets shallow pot

### Item description/product images



### Description

**Material:**

Housing, steel.  
Magnetic core AlNiCo.

**Version:**

Housing painted red.

**Note:**

Shielded system. Shallow pot magnets are used in fixtures with minimal space.

**Temperature range:**

max. 450°C.

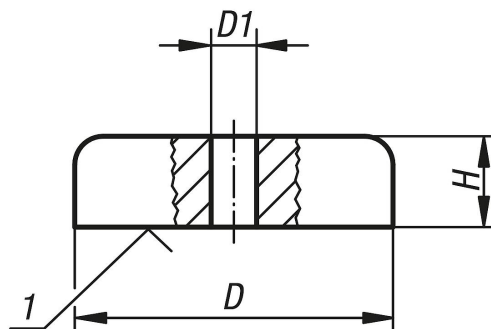
**On request:**

Other colors.

**Drawing reference:**

1) magnetic face

### Drawings



### Magnets shallow pot

Item No.	D	D1	H	Magnetic force N
K0558.01	19	3,5	8	30
K0558.02	29	5	9	55
K0558.03	38	5	10,5	95