

## Arness Accessories

### Item description/product images



### Description

**Material:**  
Steel

**Version:**  
black oxide finish

**Note:**

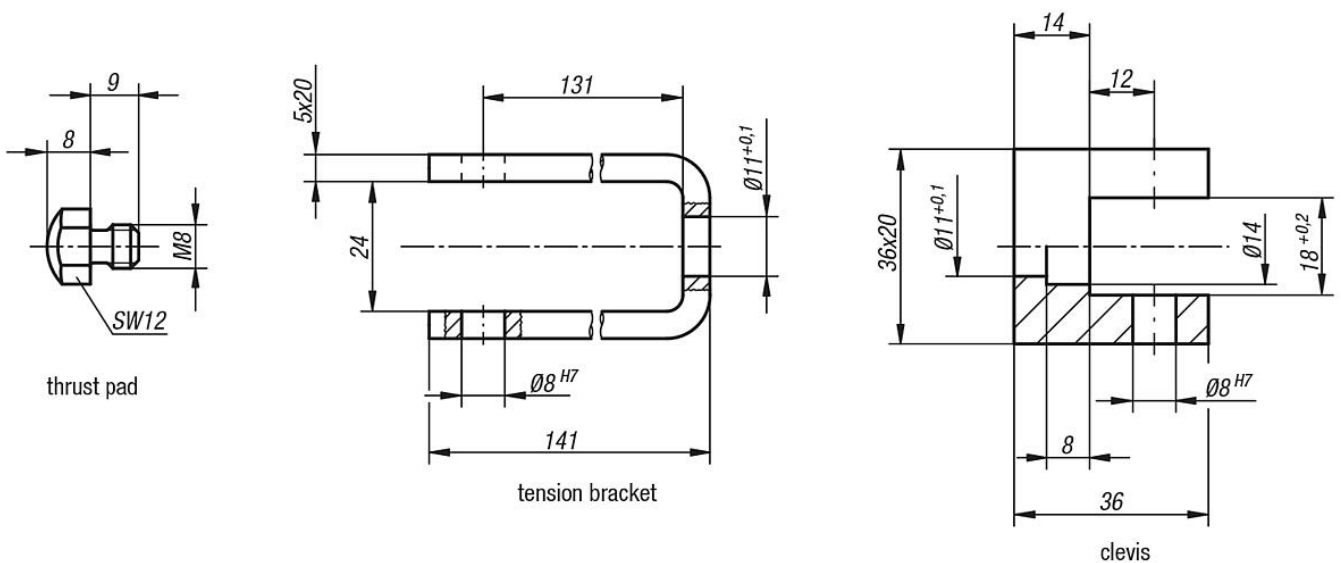
The travel path is 12 mm. Self-locking occurs in any position within only 1.5 mm of clamp travel, allowing workpieces with tolerances of up to 1 mm to be securely clamped. The arness clamping element can be fitted in any horizontal or vertical position.

Several standard parts have been developed to achieve individual adaptation for various circumstances and are available as optional accessories.

The thrust pad and all parts of the cam system subject to heavy loads are case-hardened.

The maximum permissible clamping force is approximately 4905 N.

### Drawings



**Arness Accessories**

---

Item No.	Item
K0021.02	Clevis
K0021.03	Tension Bracket
K0021.04	Thrust Pad