

## Recessed handles style B fold-down, stainless steel

### Item description/product images



### Description

#### Material:

Stainless steel 1.4301 (AISI 304 equivalent).

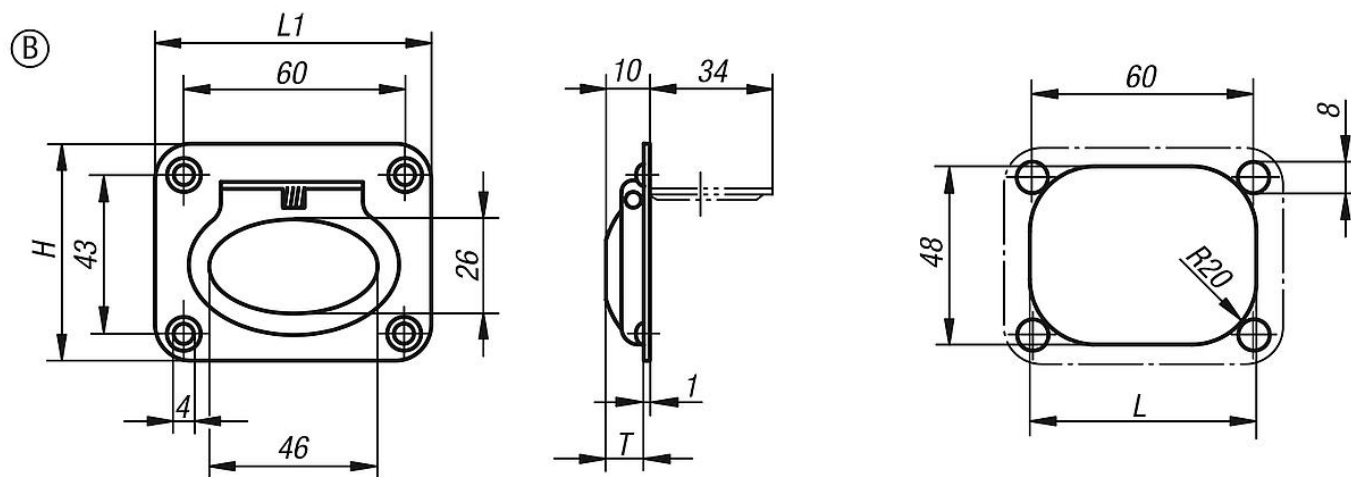
#### Version:

High-gloss electropolished.

#### Note:

Stainless steel retractable grips with marginal installation depth. For base and mounting plates or drawers. With return spring. The grip automatically swivels back into its resting position after use.

### Drawings



### Fitting grip in stainless steel

Item No.	style	Version 2	H	L	L1	T	Load capacity N
K0243.2075058	B	screw on	58	63	75	9	200