

Compression latches with adjustable tongue gap

Item description/product images



Description

Material:

Housing and actuator die-cast zinc.

Flat seal rubber.

Version:

Housing and actuator chrome-plated.

Wing-handle version powder-coated.

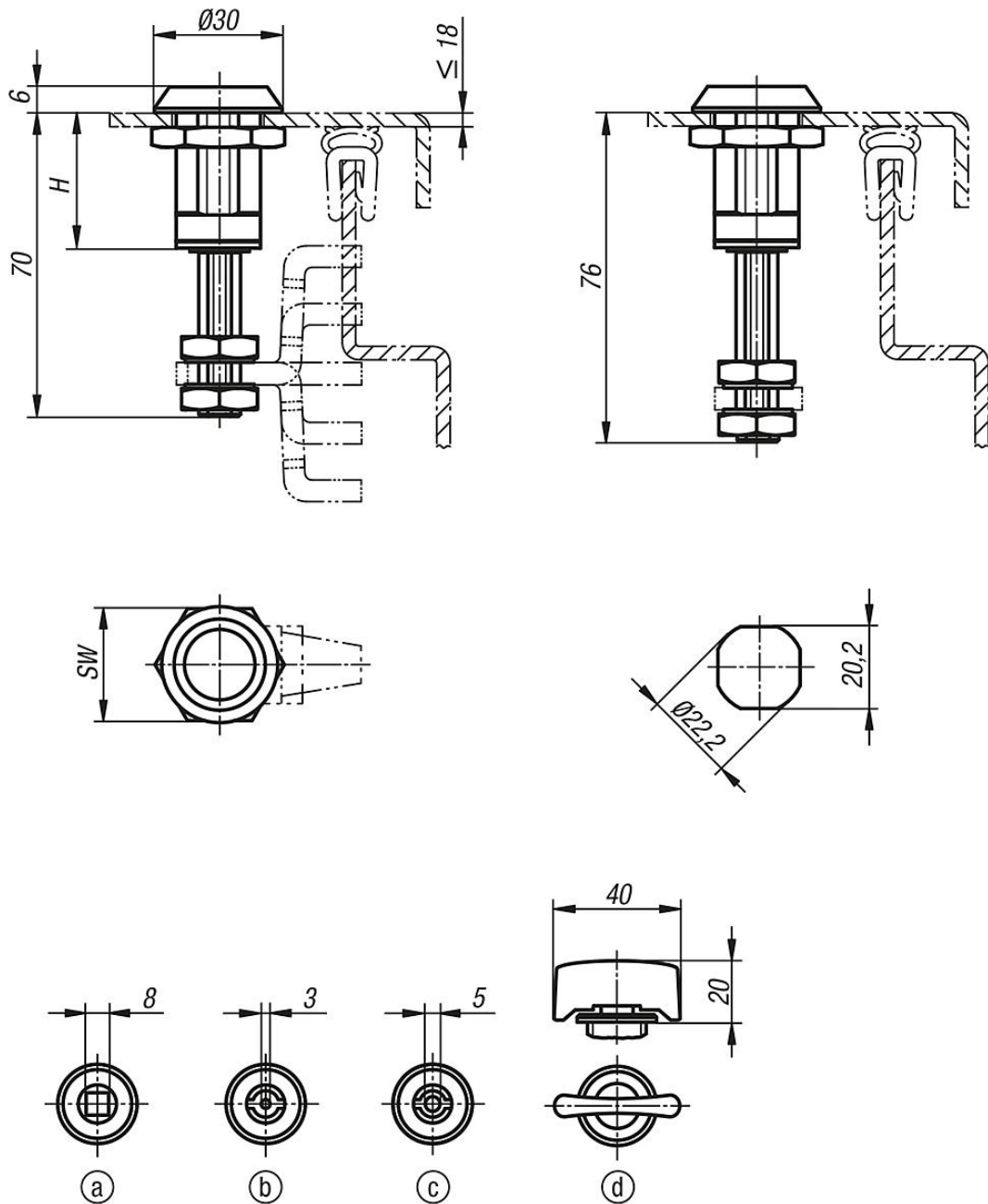
Note:

Compression latches are primarily used for doors and housings that require a high pressure on the seal. Right or left deployment. The locking direction is always clockwise.

Vibration-proof, water and dust tight according to IP65.

Compression latches with adjustable tongue gap

Drawings



Order No.	Actuation	SW	H
K0531.18321	square 8 mm	27	32
K0531.43321	double bit 3 mm	27	32
K0531.45321	double bit 5 mm	27	32
K0531.30322	wing grip	27	32

