

Weldable hinges, style A

Item description/product images



Description

Material:

Hinge steel.
Spacer washer brass.
Hinge pin steel or brass.

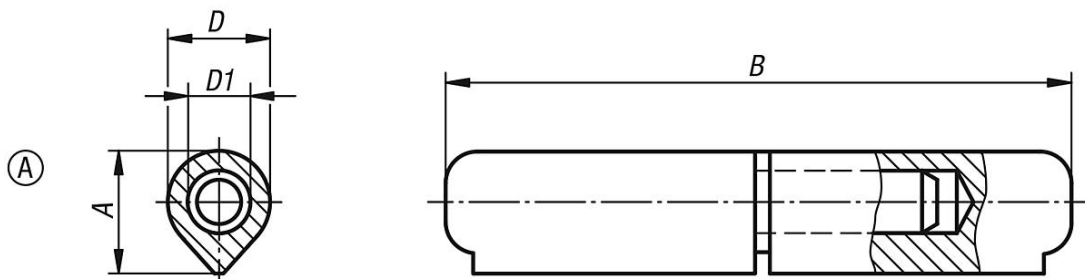
Version:

Steel parts bright.

Note:

The hinges are made of weldable profile steel.
The pin is fixed into the lower part of the hinge.
The differing steel qualities of the weld and the beam onto which the hinge is welded must be at least equal to or better than:
S235 JR+AR acc. to EN 10025-2:2004-10
DIN 8563 part 3 or Fe E 235 acc. to SIA 161

Drawings



| Item No. | Style | Component material | A | B | D | D1 |
|-----------------|-------|--------------------|------|-----|----|----|
| K0984.008040012 | A | steel | 9,7 | 40 | 8 | 5 |
| K0984.008050012 | A | steel | 9,7 | 50 | 8 | 5 |
| K0984.010060012 | A | steel | 12,7 | 60 | 10 | 6 |
| K0984.010070012 | A | steel | 12 | 70 | 10 | 6 |
| K0984.013080012 | A | steel | 15,5 | 80 | 13 | 8 |
| K0984.016100012 | A | steel | 20 | 100 | 16 | 10 |
| K0984.016120012 | A | steel | 20 | 120 | 16 | 11 |
| K0984.018135012 | A | steel | 22 | 135 | 18 | 12 |
| K0984.020150012 | A | steel | 25 | 150 | 20 | 13 |
| K0984.020180012 | A | steel | 25 | 180 | 20 | 14 |
| K0984.023200012 | A | steel | 28,5 | 200 | 23 | 16 |
| K0984.008040022 | A | brass | 9,7 | 40 | 8 | 5 |
| K0984.008050022 | A | brass | 9,7 | 50 | 8 | 5 |
| K0984.010060022 | A | brass | 12,7 | 60 | 10 | 6 |
| K0984.010070022 | A | brass | 12 | 70 | 10 | 6 |
| K0984.013080022 | A | brass | 15,5 | 80 | 13 | 8 |
| K0984.016100022 | A | brass | 20 | 100 | 16 | 10 |

Weldable hinges, style A

| Item No. | Style | Component material | A | B | D | D1 |
|-----------------|-------|--------------------|------|-----|----|----|
| K0984.016120022 | A | brass | 20 | 120 | 16 | 11 |
| K0984.018135022 | A | brass | 22 | 135 | 18 | 12 |
| K0984.020150022 | A | brass | 25 | 150 | 20 | 13 |
| K0984.020180022 | A | brass | 25 | 180 | 20 | 14 |
| K0984.023200022 | A | brass | 28,5 | 200 | 23 | 16 |