

## Position indicators not programmed

### Item description/product images



### Description

#### Material:

Housing plastic.  
Hollow shaft steel.  
Screen LCD display.  
Grub screw steel.

#### Version:

Hollow shaft black oxidized.  
Grub screw black.

#### Note:

The electronic position indicators offer diverse opportunities compared to mechanical position indicators because they display angles as well as uncommon spindle pitches and record each fraction of spindle movement.

\* Freely programmable parameters using the programming software K0411.09.

#### Technical data:

- LCD Display with 5 digits
- Digit size approx. 11.5 mm
- Display range from -19999 ... 99999
- Tunnular shaft  $\varnothing$  30 H7 mm
- Operating temperature -10 °C to +60 °C
- Storage temperature -30 °C to +80 °C
- Revolution max. 600 rpm
- Lithium battery Button cell 3V, type CR 2032. service life approx. 2 years
- Vibration-resistance according to DIN IEC 68-2-6 10 g / (5 ... 150 Hz), 20 g / (100 ... 2000 Hz)
- Shock-resistance according to DIN IEC 68-2-27 30 g / 15 ms
- EMC DIN EN 61000-4-2; DIN EN 61000-4-4
- Type of protection IP 51

#### Features:

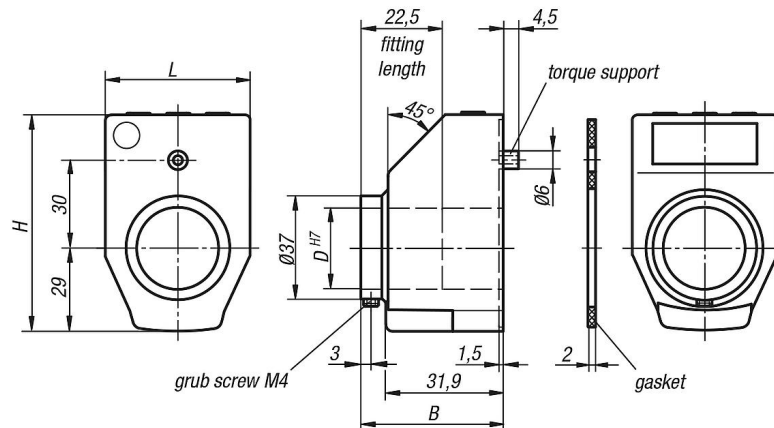
- indicated value and decimal point freely programmable
- linear or angle mode
- function key for zero-point position
- function key for switching between the absolute dimension and chain dimension
- programming of an offset value directly at the device
- easy battery change

#### Accessory:








- Reducing bushings K0412
- Programming software K0411.09

## Position indicators not programmed

### Drawings



#### Order code:

<p>K0411. <input type="text"/></p> <p><b>Indicator after one rotation:</b></p> <p>e.g. K0411.0200021120 Please indicate here which value is to be displayed after one rotation (this is usually the spindle pitch).</p> <p><b>Important:</b> Please note the decimal point position!</p>  <p><b>Angle mode:</b> (resolution 0.1°) If you want the display to be in angle mode, enter 03600.  The display in angle mode is 03600 after one rotation and returns to 00000 for the next rotation.</p>	<p><input type="text"/></p> <p><b>Decimal point position:</b></p> <p>e.g. K0411.0200021120 Please indicate here how many decimal places you require.</p> <p>0 = 00000 1 = 0000.0 2 = 000.00 3 = 00.000</p>  <p><b>Angle mode:</b> If you want the display to be in angle mode, the decimal point is best put in position 1.  This means the display shows the value 0360.0 after one rotation.</p>	<p><input type="text"/></p> <p><b>Assembly position:</b></p> <p>e.g. K0411.0200021120 1 = Mounting position for horizontal spindle 3 = Mounting position for vertical spindle</p>  	<p><input type="text"/></p> <p><b>Count direction:</b></p> <p>e.g. K0411.0200021120 1 = clockwise (ascending values) 2 = anticlockwise (ascending values)</p> 	<p><input type="text"/></p> <p><b>Colour:</b></p> <p>e.g. K0411.0200021120 1 = orange 2 = black</p> 	<p><input type="text"/></p> <p><b>Zero-point position:</b></p> <p>e.g. K0411.0200021120 0 = directly 5 = delayed by 5 sec.</p>  <p>The Zero-point position can be delayed by 5 sec. by means of a parameter, in order to avoid accidental zero setting.</p>
---	---	---	---	---	--

Item No.	Assembly position	Main color	Version 2	
K0411.11	1	orange	freely programmable	K0411.09
K0411.12	1	black	freely programmable	K0411.09
K0411.31	3	orange	freely programmable	K0411.09
K0411.32	3	black	freely programmable	K0411.09

