

Swivel feet plates extended, die-cast zinc, style C

Item description/product images



Description

Material:

Die-cast zinc plates

Version:

Plate black powder-coated.

Order information:

If the swivel foot plate and the threaded spindle or ball joint are to be supplied assembled, please add the suffix "assembled" to the order number for the plate and the spindle or ball joint.

(e.g. K0417.30801 and K0421.060151 assembled.)

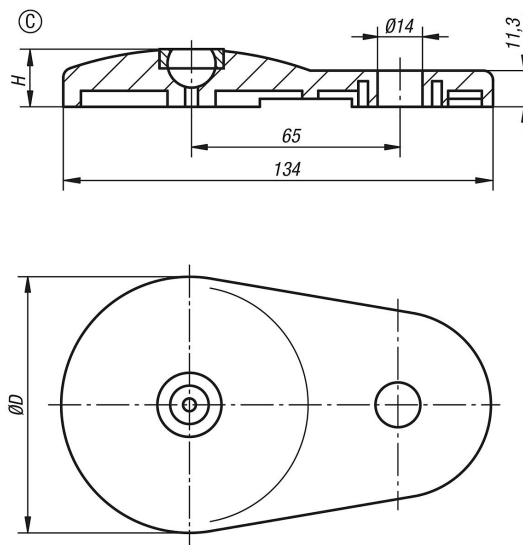
Note:

Swivel feet consist of a plate and a threaded spindle or ball joint. Any plate can be combined with any threaded spindle or ball joint.

For matching threaded spindles see K0421.

For matching ball joints see K0422.

Drawings



Swivel feet plates extended, die-cast zinc

Item No.	style	D	H	Load rating max. kN
K0417.30801	C	80	18	30