

## Quarter-turn locks, stainless steel

### Item description/product images



### Description

**Material:**

Quarter-turn lock 1.4401 (AISI 316 equivalent) stainless steel.

Tongue 1.4301 (AISI 304 equivalent) stainless steel.

**Version:**

Bright.

**Note:**

The lock can be installed pre-assembled and has a 90° closing angle. It is protected against water and dust according to IP65 of EN 60529.

**Drawing reference:**

Actuation:

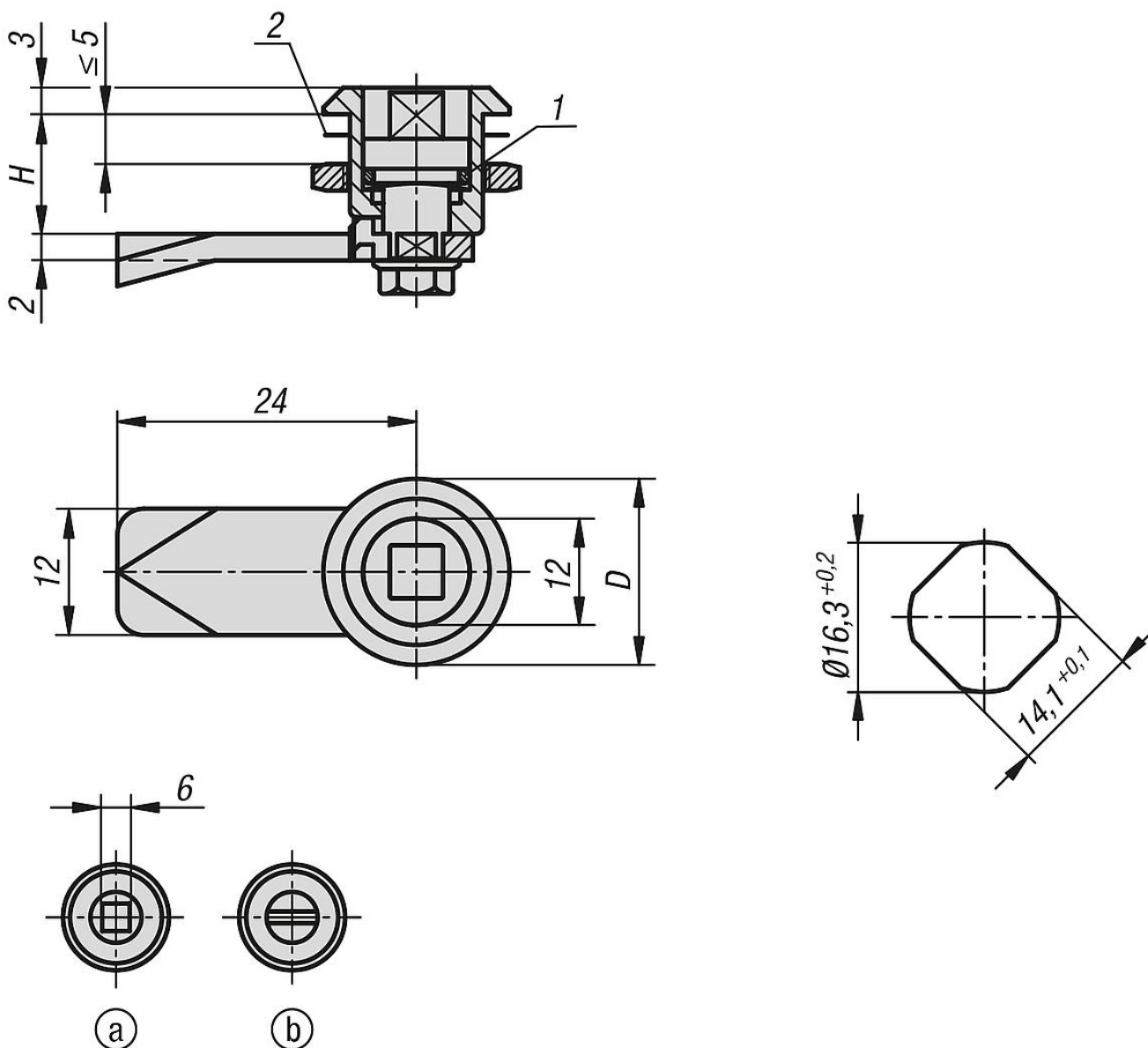
- a) square 6 mm
- b) slot

1) O-ring

2) flat seal

## Quarter-turn locks, stainless steel

### Drawings



Order No.	Actuation	D	H
K1360.1613	square 6 mm	20	13,5
K1360.2013	slot	20	13,5