

## Slam latches, style B

### Item description/product images

#### METRIC Parts



### Description

**Material:**

Die cast aluminum.  
End caps plastic.

**Version:**

Black powder-coated.  
End caps black.

**Note:**

For the simple and safe locking of doors and hatches. Installed from the front without mechanical processing using M6 cylinder-head or cheese-head screws. Secured to prevent removal when locked.

The key-operated version is supplied with 2 keys. The key can be removed in both positions (open and closed). The locks are keyed alike, i.e. they can all be opened using the same key (euro key 5333).

**Drawing reference:**

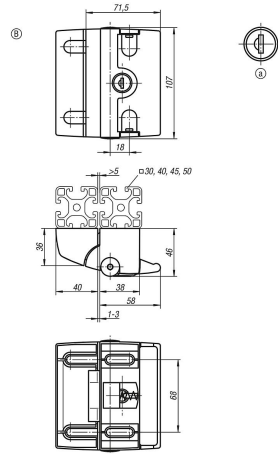
Actuation:

a) Key single-key system



**Slam latches, style B**

**Drawings**



Order No.	Main color	Style	Slot width	Actuation
K1496.200681	black	B	8/10	not lockable
K1496.270681	black	B	8/10	key