

Self-aligning pads with O-ring and exchangeable inserts, style K, flattened POM insert smooth

Item description/product images



Description

Material:

Body carbon steel.

Ball rust and acid resistant steel.

Insert:

style K POM

Version:

Body tempered and black oxidized.

Ball hardened and bright.

Insert:

style K white

Note:

Self-aligning pads are used to support and clamp unmachined and machined workpieces.

They can also be used as stops, supports and thrust pads in fixtures and toolmaking.

The ball can be removed from the housing by applying light pressure to the socket head screw.

Ball secured against rotation.

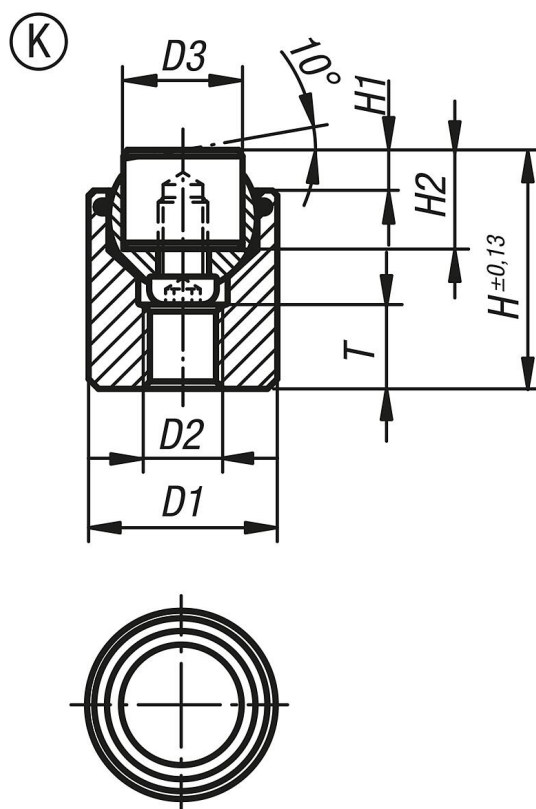
Benefits:

Highly cost-effective as inserts can be exchanged.

The built-in O-ring holds the ball in place and keeps dirt and foreign particles out, ensuring unistyle movement.

Self-aligning pads with O-ring and exchangeable inserts, style K, flattened POM insert smooth

Drawings



Order No.	style	D1	D2	D3	H	H1	H2	T	Ball-Ø	Load rating max. kN (static load only)	Item No. POM insert
K0285.717X022	K	17	M6	10	22	4	10	7	13	4	K0385.10109
K0285.719X024	K	19	M8	12	24	4	10	8	15	7	K0385.12109
K0285.724X028	K	24	M10	16	28	4	10	8	20	14	K0385.16109
K0285.730X030	K	30	M12	20	30	4	10	9	23	27	K0385.20109
K0285.736X036	K	36	M12	25	36	4	10	11	28	47	K0385.25109