

Self-aligning pads, adjustable, with O-ring, style C, flattened steel ball smooth

Item description/product images



Description

Material:

Body carbon steel.
Ball tool steel.

Version:

Body tempered.
Ball hardened, black oxidized.

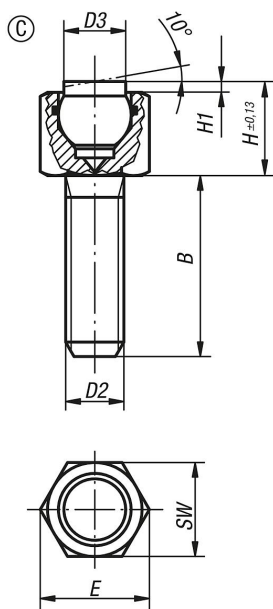
Note:

Self-aligning pads are used to support and clamp unmachined and machined workpieces.
They can also be used as stops, supports and thrust pads in fixtures and toolmaking.
Ball secured against rotation.

Benefits:

The built-in O-ring holds the ball in place and keeps dirt and foreign particles out, ensuring unistyle movement.

Drawings



Order No.	style	B	D2	D3	H	H1	E	SW	Ball-Ø	Load rating max. kN (static load only)
K0288.106X012	C	12	M6	6	9,5	1,5	11,5	10	7	9
K0288.106X025	C	25	M6	6	9,5	1,5	11,5	10	7	9
K0288.106X040	C	40	M6	6	9,5	1,5	11,5	10	7	9
K0288.108X012	C	12	M8	8,5	13	1,5	15	13	10	15
K0288.108X025	C	25	M8	8,5	13	1,5	15	13	10	15

Self-aligning pads, adjustable, with O-ring, style C, flattened steel ball smooth

Order No.	style	B	D2	D3	H	H1	E	SW	Ball-Ø	Load rating max. kN (static load only)
K0288.108X040	C	40	M8	8,5	13	1,5	15	13	10	15