

## Self-aligning pads, adjustable, with O-ring and exchangeable inserts, style C, flattened steel insert smooth

Item description/product images



### Description

#### Material:

Body carbon steel.

Ball rust and acid resistant steel.

Insert:

style C tool steel.

#### Version:

Body tempered and black oxidized.

Ball hardened, bright.

Insert:

style C hardened and black oxidized.

#### Note:

Self-aligning pads are used to support and clamp unmachined and machined workpieces.

They can also be used as stops, supports and thrust pads in fixtures and toolmaking.

The ball can be removed from the housing by applying light pressure to the socket head screw.

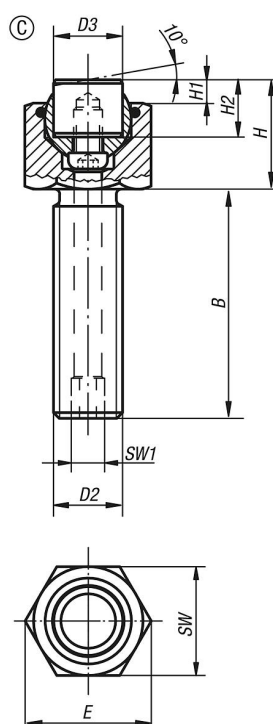
Ball secured against rotation.

#### Benefits:

Highly cost-effective as inserts can be exchanged.

The built-in O-ring holds the ball in place and keeps dirt and foreign particles out, ensuring unistyle movement.

### Drawings



## Self-aligning pads, adjustable, with O-ring and exchangeable inserts, style C, flattened steel insert smooth

Order No.	style	B	D2	D3	H	H1	H2	E	SW	SW1	Ball-Ø	Load rating max. kN (static load only)	Item No. steel insert
K0289.110X015	C	15	M10	10	17	4	10	19,6	17	3	13	19	K0385.10108
K0289.110X030	C	30	M10	10	17	4	10	19,6	17	3	13	19	K0385.10108
K0289.110X050	C	50	M10	10	17	4	10	19,6	17	3	13	19	K0385.10108
K0289.112X020	C	20	M12	12	19	4	10	21,9	19	5	15	30	K0385.12108
K0289.112X040	C	40	M12	12	19	4	10	21,9	19	5	15	30	K0385.12108
K0289.112X060	C	60	M12	12	19	4	10	21,9	19	5	15	30	K0385.12108
K0289.116X025	C	25	M16	16	23	4	10	27,7	24	6	20	50	K0385.16108
K0289.116X050	C	50	M16	16	23	4	10	27,7	24	6	20	50	K0385.16108
K0289.116X080	C	80	M16	16	23	4	10	27,7	24	6	20	50	K0385.16108
K0289.120X030	C	30	M20	20	24	4	10	34,6	30	8	23	85	K0385.20108
K0289.120X060	C	60	M20	20	24	4	10	34,6	30	8	23	85	K0385.20108
K0289.120X100	C	100	M20	20	24	4	10	34,6	30	8	23	85	K0385.20108
K0289.124X040	C	40	M24	25	30	4	10	41,6	36	10	28	121	K0385.25108
K0289.124X100	C	100	M24	25	30	4	10	41,6	36	10	28	121	K0385.25108