

## Self-aligning pads, adjustable, with O-ring and hexagon socket style C, flattened steel ball smooth

Item description/product images



### Description

#### Material:

Body carbon steel.

Ball tool steel.

#### Version:

Body tempered.

Ball hardened, black oxidized.

#### Note:

Self-aligning pads are used to support and clamp unmachined and machined workpieces.

They can also be used as stops, supports and thrust pads in fixtures and toolmaking.

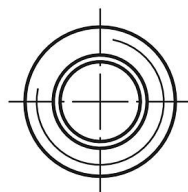
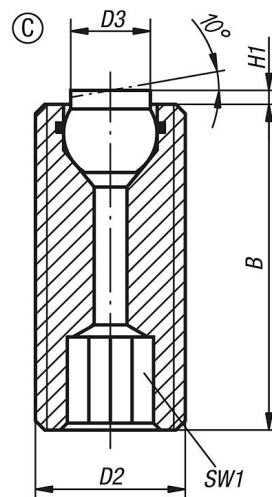
Ball secured against rotation.

#### Benefits:

The built-in O-ring holds the ball in place and keeps dirt and foreign particles out, ensuring unistyle movement.

The hexagon socket allows easy adjustment and positioning in through holes.

### Drawings



**Self-aligning pads, adjustable, with O-ring and hexagon socket style C,  
flattened steel ball smooth**

Order No.	style	B	D2	D3	H1	SW1	Ball-Ø	Load rating max. kN (static load only)
K0290.112X025	C	25	M12	6	1,5	6	7	15
K0290.112X035	C	35	M12	6	1,5	6	7	15
K0290.112X050	C	50	M12	6	1,5	6	7	15
K0290.116X025	C	25	M16	8,5	1,5	8	10	23
K0290.116X035	C	35	M16	8,5	1,5	8	10	23
K0290.116X050	C	50	M16	8,5	1,5	8	10	23