

## Spring Plungers with thread lock, pin style, slotted, stainless steel, heavy end pressure, metric

Item description/product images



### Description

#### Material:

Sleeve 1.4305 (AISI 303 equivalent).  
Thrust pin 1.4034 (AISI 420 equivalent).  
Spring 1.4310 (AISI 301 equivalent).

Thread lock nylon.

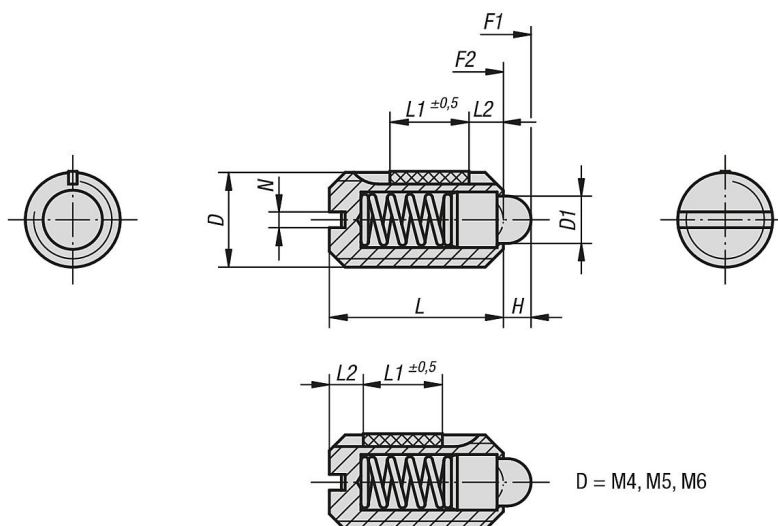
#### Version:

Bright.  
Thrust pin hardened.

#### Drawing reference:

L2 = approx. 2x thread pitch

### Drawings



### Spring plungers with slot and thrust pin, heavy spring force, with thread lock

| Item No.  | D   | D1  | H   | L  | L1 | N   | Spring force initial pressure F1 approx. N | Spring force final pressure F2 approx. N | Tightening torque approx. Nm | Loosening torque approx. Nm |
|-----------|-----|-----|-----|----|----|-----|--|--|------------------------------|-----------------------------|
| K0324.205 | M5  | 2,4 | 2   | 12 | 6  | 0,8 | 9  | 25                                       | 0,12                         | 0,08                        |
| K0324.206 | M6  | 2,7 | 2   | 14 | 7  | 1   | 11   | 25                                       | 0,44                         | 0,21                        |
| K0324.208 | M8  | 4   | 2   | 16 | 8  | 1,2 | 22   | 43                                       | 1,1                          | 0,38                        |
| K0324.210 | M10 | 4,5 | 2,5 | 19 | 9  | 1,6 | 20   | 54                                       | 1,36                         | 0,62                        |
| K0324.212 | M12 | 6   | 3,5 | 22 | 10 | 2   | 36   | 94                                       | 2,11                         | 1,41                        |
| K0324.216 | M16 | 8,5 | 4,5 | 24 | 14 | 2,5 | 60   | 110                                      | 3,99                         | 3,05                        |

## K0324 Metric

**Spring Plungers with thread lock, pin style, slotted, stainless steel,  
heavy end pressure, metric**

