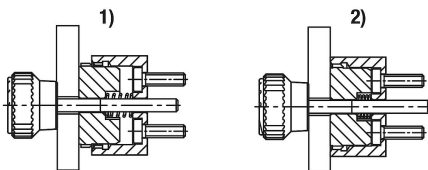
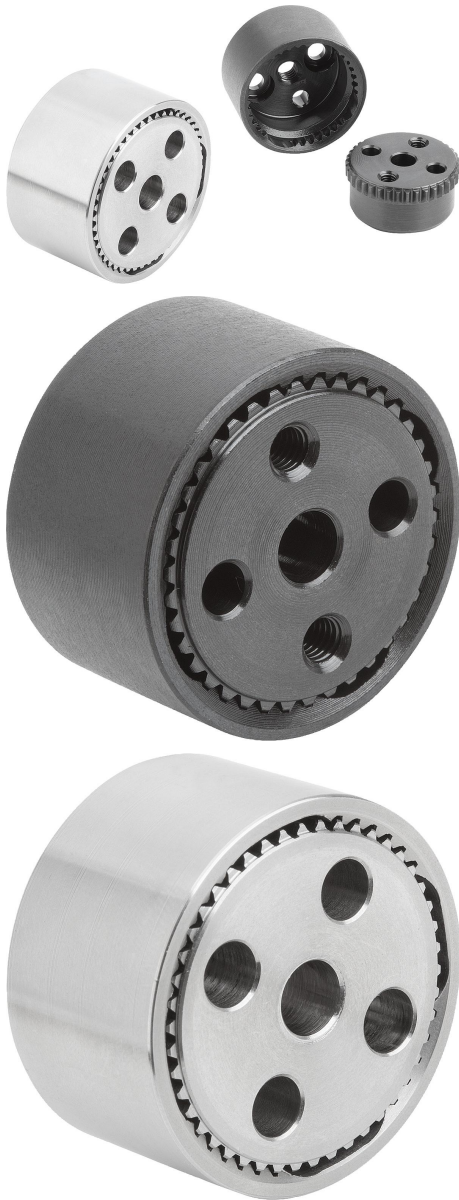


## Ratchet elements steel or stainless steel

### Item description/product images



### Description

#### Product description:

Ratchet elements are used to connect two components together in any angular position with a positive fit. The ratchet elements with internal toothing (styles A–D) can be combined with the ratchet elements with external toothing (styles E–H) in any way depending on the application and installation possibilities. The springs mean that a new angular position can be quickly implemented.

#### Material:

Ratchet element steel 1.0718 or stainless steel 1.4305 (AISI 303 equivalent).  
Spring stainless steel 1.4310 (AISI 301 equivalent).  
Cap screws steel or stainless steel A 2.

#### Version:

Ratchet element black oxidized steel or bright stainless steel.  
Spring bright.  
Cap screw blackened steel grade 8.8 or bright A2-70 stainless steel.

#### Order information:

2 cap screws M3x8 or M5x10 are supplied with the internal toothed ratchet elements styles A and B.  
A stainless steel spring is supplied with the external toothed ratchet elements styles E to H.

#### Note:

Use DIN 7984 low headed cap screws for fastening the style A and B ratchet elements.

#### Function:

The ratchet elements are used for rotary adjustment of components. Fastening options can be arranged according to the application.

#### Accessory:

DIN 912/DIN EN ISO 4762 cap screws  
DIN 6912 cap screws

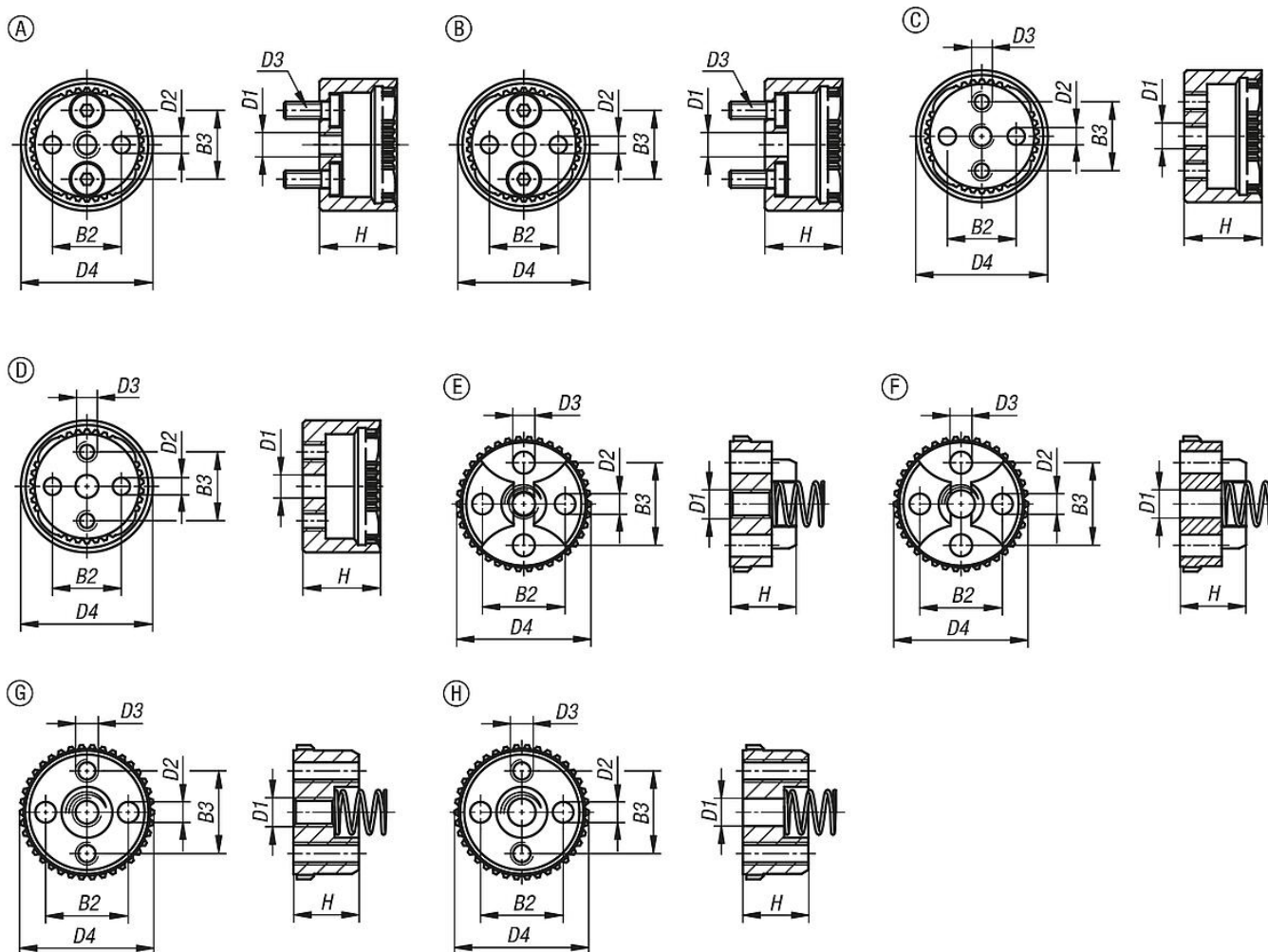
#### Drawing reference:

Style A: internal toothing, center tapped hole, 2x counterbores for low headed cap screws, 2x reamed holes  
Style B: internal toothing, center through bore, 2x counterbores for low headed cap screws, 2x reamed holes  
Style C: internal toothing, center tapped hole, 2x tapped holes for fastening, 2x reamed holes  
Style D: internal toothing, center through bore, 2x tapped holes for fastening, 2x reamed holes  
Style E: external toothing, center tapped hole, 2x counterbores for cap screws, 2x reamed holes  
Style F: external toothing, center through bore, 2x counterbores for cap screws, 2x reamed holes  
Style G: external toothing, center tapped hole, 2x tapped holes, 2x reamed holes  
Style H: external toothing, center through bore, 2x tapped holes, 2x reamed holes

1) disengaged  
2) engaged

# Ratchet elements steel or stainless steel

## Drawings



## Ratchet elements steel or stainless steel

| Order No.    | style | Version 1             | Main material   | B2 | B3 | drill Ø D1 | D1 | D2  | D3  | D4 | H    | No. of teeth |
|--------------|-------|-----------------------|-----------------|----|----|------------|----|-----|-----|----|------|--------------|
| K1446.12338  | A     | with internal tothing | steel           | 12 | 12 | -          | M4 | 3H8 | M3  | 23 | 13,5 | 38           |
| K1446.13346  | A     | with internal tothing | steel           | 18 | 18 | -          | M6 | 5H8 | M5  | 33 | 19,5 | 46           |
| K1446.22338  | B     | with internal tothing | steel           | 12 | 12 | 4,2        | -  | 3H8 | M3  | 23 | 13,5 | 38           |
| K1446.23346  | B     | with internal tothing | steel           | 18 | 18 | 6,2        | -  | 5H8 | M5  | 33 | 19,5 | 46           |
| K1446.32338  | C     | with internal tothing | steel           | 12 | 12 | -          | M4 | 3H8 | M3  | 23 | 13,5 | 38           |
| K1446.33346  | C     | with internal tothing | steel           | 18 | 18 | -          | M6 | 5H8 | M5  | 33 | 19,5 | 46           |
| K1446.42338  | D     | with internal tothing | steel           | 12 | 12 | 4,2        | -  | 3H8 | M3  | 23 | 13,5 | 38           |
| K1446.43346  | D     | with internal tothing | steel           | 18 | 18 | 6,2        | -  | 5H8 | M5  | 33 | 19,5 | 46           |
| K1446.52338  | E     | with external tothing | steel           | 12 | 12 | -          | M4 | 3H8 | 3,2 | 23 | 9,5  | 38           |
| K1446.53346  | E     | with external tothing | steel           | 18 | 18 | -          | M6 | 5H8 | 5,3 | 33 | 13   | 46           |
| K1446.62338  | F     | with external tothing | steel           | 12 | 12 | 4,2        | -  | 3H8 | 3,2 | 23 | 9,5  | 38           |
| K1446.63346  | F     | with external tothing | steel           | 18 | 18 | 6,2        | -  | 5H8 | 5,3 | 33 | 13   | 46           |
| K1446.72338  | G     | with external tothing | steel           | 12 | 12 | -          | M4 | 3H8 | M3  | 23 | 9,5  | 38           |
| K1446.73346  | G     | with external tothing | steel           | 18 | 18 | -          | M6 | 5H8 | M5  | 33 | 13   | 46           |
| K1446.82338  | H     | with external tothing | steel           | 12 | 12 | 4,2        | -  | 3H8 | M3  | 23 | 9,5  | 38           |
| K1446.83346  | H     | with external tothing | steel           | 18 | 18 | 6,2        | -  | 5H8 | M5  | 33 | 13   | 46           |
| K1446.112338 | A     | with internal tothing | stainless steel | 12 | 12 | -          | M4 | 3H8 | M3  | 23 | 13,5 | 38           |
| K1446.113346 | A     | with internal tothing | stainless steel | 18 | 18 | -          | M6 | 5H8 | M5  | 33 | 19,5 | 46           |
| K1446.122338 | B     | with internal tothing | stainless steel | 12 | 12 | 4,2        | -  | 3H8 | M3  | 23 | 13,5 | 38           |
| K1446.123346 | B     | with internal tothing | stainless steel | 18 | 18 | 6,2        | -  | 5H8 | M5  | 33 | 19,5 | 46           |

## Ratchet elements steel or stainless steel

| Order No.    | style | Version 1              | Main material   | B2 | B3 | drill Ø<br>D1 | D1 | D2  | D3  | D4 | H    | No. of teeth |
|--------------|-------|------------------------|-----------------|----|----|---------------|----|-----|-----|----|------|--------------|
| K1446.132338 | C     | with internal toothing | stainless steel | 12 | 12 | -             | M4 | 3H8 | M3  | 23 | 13,5 | 38           |
| K1446.133346 | C     | with internal toothing | stainless steel | 18 | 18 | -             | M6 | 5H8 | M5  | 33 | 19,5 | 46           |
| K1446.142338 | D     | with internal toothing | stainless steel | 12 | 12 | 4,2           | -  | 3H8 | M3  | 23 | 13,5 | 38           |
| K1446.143346 | D     | with internal toothing | stainless steel | 18 | 18 | 6,2           | -  | 5H8 | M5  | 33 | 19,5 | 46           |
| K1446.152338 | E     | with external toothing | stainless steel | 12 | 12 | -             | M4 | 3H8 | 3,2 | 23 | 9,5  | 38           |
| K1446.153346 | E     | with external toothing | stainless steel | 18 | 18 | -             | M6 | 5H8 | 5,3 | 33 | 13   | 46           |
| K1446.162338 | F     | with external toothing | stainless steel | 12 | 12 | 4,2           | -  | 3H8 | 3,2 | 23 | 9,5  | 38           |
| K1446.163346 | F     | with external toothing | stainless steel | 18 | 18 | 6,2           | -  | 5H8 | 5,3 | 33 | 13   | 46           |
| K1446.172338 | G     | with external toothing | stainless steel | 12 | 12 | -             | M4 | 3H8 | M3  | 23 | 9,5  | 38           |
| K1446.173346 | G     | with external toothing | stainless steel | 18 | 18 | -             | M6 | 5H8 | M5  | 33 | 13   | 46           |
| K1446.182338 | H     | with external toothing | stainless steel | 12 | 12 | 4,2           | -  | 3H8 | M3  | 23 | 9,5  | 38           |
| K1446.183346 | H     | with external toothing | stainless steel | 18 | 18 | 6,2           | -  | 5H8 | M5  | 33 | 13   | 46           |