

## Rest pads, pin style with external thread

### Item description/product images



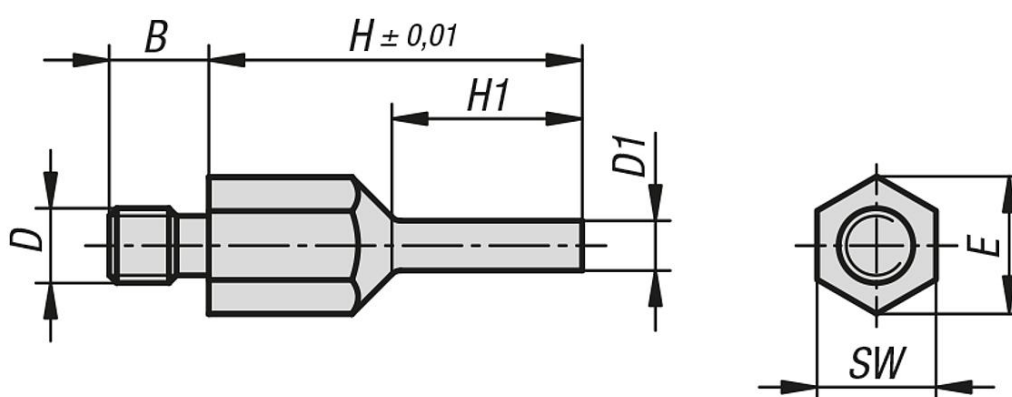
### Description

**Material:**  
Carbon steel.

**Version:**  
Tempered, black oxidized.  
Seating face inductively hardened and ground.

**Note:**  
The rest pads can be used both as a stable and precise support and as a stop.  
The pin style of the rest pad also allows it to be used with components with constricted support points.

### Drawings



### Rest pads, pin style with external thread

Order No.	B	D	D1	E	H	H1	SW
K1105.1060420	8	M6	4	11	20	10	10
K1105.1060430	8	M6	4	11	30	15	10
K1105.1080430	10	M8	4	14,4	30	15	13
K1105.1080440	10	M8	4	14,4	40	20	13
K1105.1080630	10	M8	6	14,4	30	15	13
K1105.1080640	10	M8	6	14,4	40	20	13
K1105.1100630	14	M10	6	19	30	15	17
K1105.1100650	14	M10	6	19	50	25	17
K1105.1100830	14	M10	8	19	30	15	17

**Rest pads, pin style with external thread**

Order No.	B	D	D1	E	H	H1	SW
<b>K1105.1100850</b>	14	M10	8	19	50	25	17
<b>K1105.1120640</b>	14	M12	6	21,2	40	20	19
<b>K1105.1120660</b>	14	M12	6	21,2	60	30	19
<b>K1105.1120840</b>	14	M12	8	21,2	40	20	19
<b>K1105.1120860</b>	14	M12	8	21,2	60	30	19