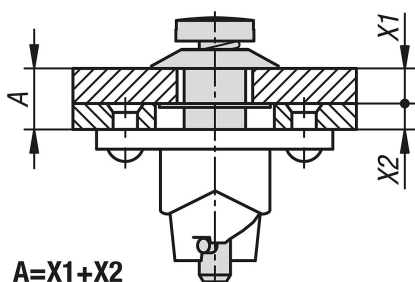


## Quarter turn latches, with knurled head

### Item description/product images



$$A=X1+X2$$

### Description

**Material:**

Steel.

**Version:**

Electro zinc-plated.

**Note:**

Quarter-turn latches for securely holding and locking hatches, container lids, machine covers and similar. The lock is closed or opened by turning it through 90°. This moves the cross pin in the locking bolt through a curve in the bottom part of the lock, thus tensioning the spring. At the end point of the curve there is a little recess in which the cross pin engages. The pretensioning force generated in the lock by the spring ensures that the connection is held securely despite any vibrations.

All components in the locking system (locking bolt, retaining washer and bottom part) are captive components which are joined to the cover of the frame.

They are operated toollessly using a knurled handle.

The quarter turn latch always consists of a 1/4 turn lock, retaining washer and lock bottom part.

**Technical data:**

Maximum tractive force 1300 N.

**Assembly:**

A hole of 8 mm is drilled through the cover, the bolt with cross pin are pushed through and secured to the retaining washer from the rear. A 13 mm center hole is drilled in the frame, with two mounting holes which depend on the hole pattern in the bottom part.

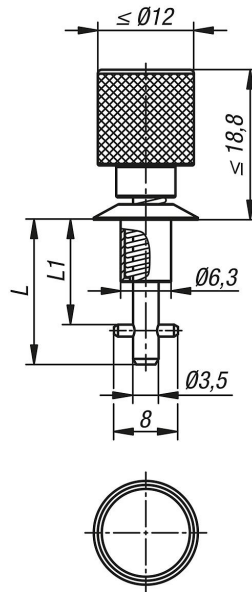
**Accessory:**

Retaining washers K1731.

Lock bottom part K1732.

## Quarter turn latches, with knurled head

### Drawings



Order No.	A	L	L1
K1730.311315	0,75 - 1,50	18,15	13,15
K1730.311390	1,50 - 2,25	18,15	13,9
K1730.311465	2,25 - 3,00	18,15	14,65
K1730.311540	3,00 - 3,75	20,4	15,4
K1730.311615	3,75 - 4,50	20,4	16,15
K1730.311690	4,50 - 5,25	20,4	16,9
K1730.311765	5,25 - 6,00	22,65	17,65
K1730.311840	6,00 - 6,75	22,65	18,4
K1730.311915	6,75 - 7,50	22,65	19,15
K1730.311990	7,50 - 8,25	24,9	19,9
K1730.312065	8,25 - 9,00	24,9	20,65
K1730.312140	9,00 - 9,75	24,9	21,4
K1730.312215	9,75 - 10,50	27,15	22,15
K1730.312290	10,50 - 11,25	27,15	22,9
K1730.312365	11,25 - 12,00	27,15	23,65
K1730.312440	12,00 - 12,75	29,4	24,4
K1730.312515	12,75 - 13,50	29,4	25,15
K1730.312590	13,50 - 14,25	29,4	25,9
K1730.312665	14,25 - 15,00	31,65	26,65
K1730.312740	15,00 - 15,75	31,65	27,4
K1730.312815	15,75 - 16,50	31,65	28,15
K1730.312890	16,50 - 17,25	33,9	28,9
K1730.312965	17,25 - 18,00	33,9	29,65
K1730.313040	18,00 - 18,75	33,9	30,4
K1730.313115	18,75 - 19,50	36,15	31,15
K1730.313190	19,50 - 20,25	36,15	31,9
K1730.313265	20,25 - 21	36,15	32,65