

# Locating bushings stainless steel for locating cylinder, pneumatic

## Item description/product images



### Description

#### Material:

Stainless steel

#### Version:

Hardened.

#### Note:

Mounting dimensions style A:

Mounting with nut, max. plate thickness 10 mm.

Mounting dimensions style B:

Screwed in, for plate thicknesses over 10 mm or in a blind hole.

Color may differ from the image due to the hardening process.

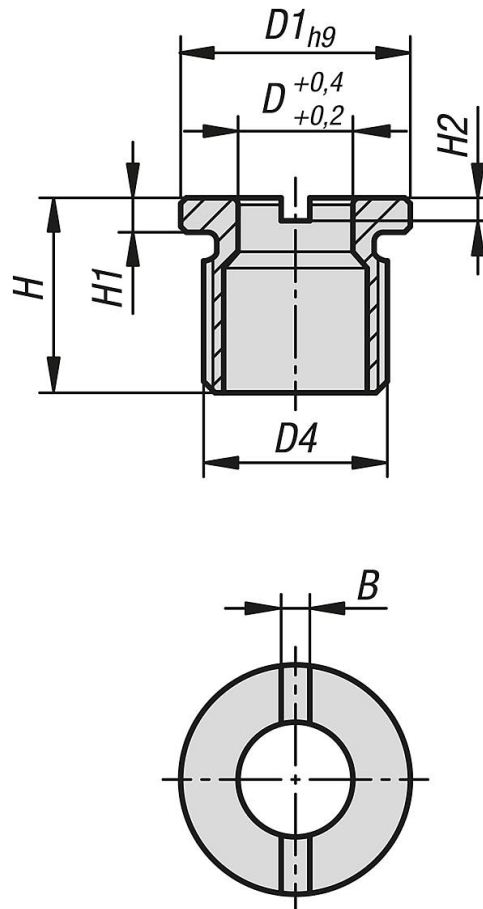
#### On request:

Suitable nuts and assembly tool.

#### Accessory:

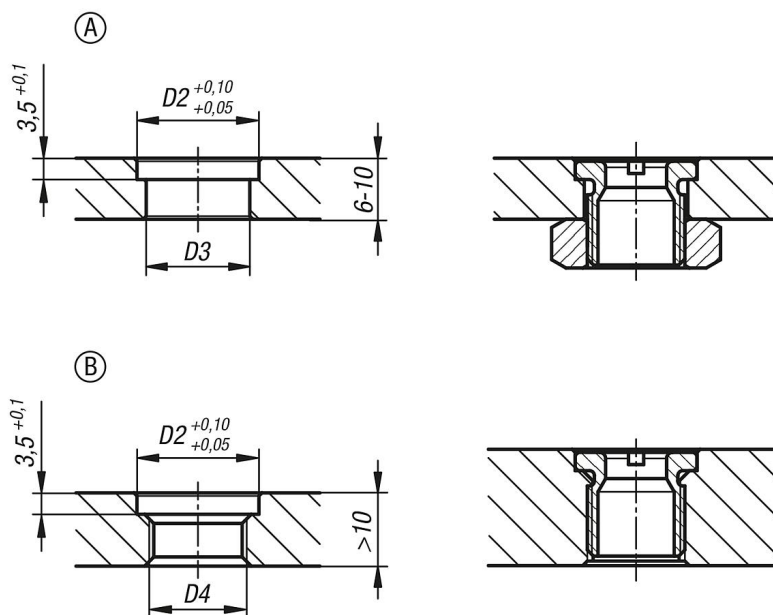
K1738 Locating cylinder stainless steel, pneumatic

## Drawings



# Locating bushings stainless steel for locating cylinder, pneumatic

## Drawings



## Locating bushings stainless steel for locating cylinder, pneumatic

Order No.	B	D	D1	D2	D3	D4	H	H1	H2
K1739.101	2,5	10	20	20	17	M16x1,5	17	3	2