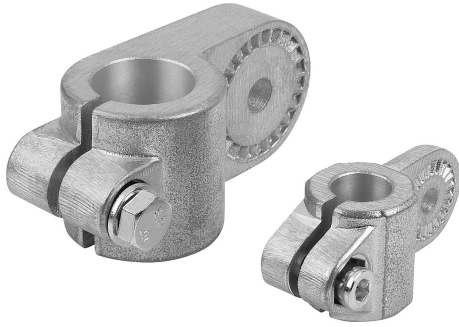


## Tube clamps, swivel half aluminum, with sunken teeth

### Item description/product images



### Description

#### Material:

Cast aluminum.  
Screws and nuts steel.

#### Version:

Vibratory ground.  
Screws and nuts electro zinc-plated.

#### Note:

Swivel half clamps with sunken teeth can be combined with swivel half clamps with raised teeth (K0485) to make a complete swivel clamp.

Max. torque when tightening the lockscrew:

M6: 10 Nm.

M8: 25 Nm.

M10: 50 Nm

#### On request:

Adjustable handles for tightening.

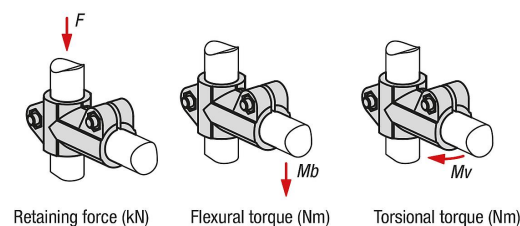
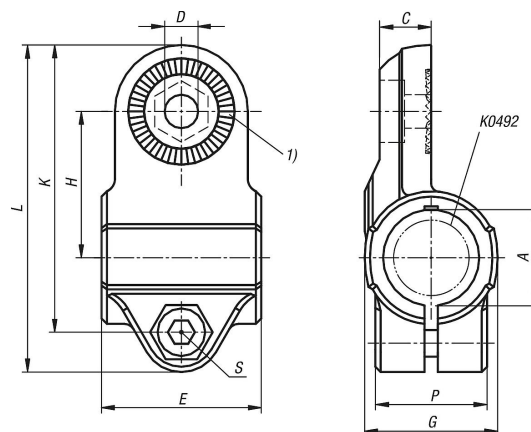
#### Accessory:

- Hex nut DIN 985
- Hex head bolt DIN 933
- Cap screw DIN 6912

#### Drawing reference:

- 1) 15° toothing

### Drawings



Retaining force (kN)

Flexural torque (Nm)

Torsional torque (Nm)

## Tube clamps, swivel half aluminum, with sunken teeth

Order No.	A	C	D	E	G	H	K	L	P	S	F kN	Mb (Nm)	Mv (Nm)
<b>K0486.512</b>	12,1	10,5	7,5	30	26	27	56	64,5	21	M6	2,7	38	15
<b>K0486.514</b>	14,1	10,5	7,5	30	26	27	56	64,5	21	M6	2,7	38	15
<b>K0486.516</b>	16,1	10,5	7,5	30	26	27	56	64,5	21	M6	2,7	38	15
<b>K0486.518</b>	18,1	10,5	7,5	30	26	27	56	64,5	21	M6	2,7	38	15
<b>K0486.520</b>	20	16	9	40	40	43	85	93	33	M8	6	133	85
<b>K0486.525</b>	25,1	16	9	40	40	43	85	93	33	M8	6	133	85
<b>K0486.530</b>	30,1	16	9	40	40	43	85	93	33	M8	6	133	85
<b>K0486.540</b>	40,2	22	11	56	56	60	116	128	48	M10	5,8	264	138