

Link clamp, hydraulic, double-acting, style C drilled channels

Item description/product images



Description

Product description:

Link clamps are the optimal choice when, due to the clamping situation, the workpiece needs to be freely removed from above when unclamped. Due to the linear movement of the tension lever when opening or closing the link clamp, it is particularly suitable for clamping situations where a lateral movement of the clamping element is not possible, e.g. due to interfering contours. The force is transferred to the tensioning lever of the link clamp via the piston. The opening and closing times are clearly defined due to the link clamps double-acting mode of operation.

Material:

Housing and piston steel.

Version:

Housing black oxidized.

Piston hardened.

Note:

The tensioning lever of the link clamp develops its optimum clamping force in the horizontal position.

Workpiece tolerances are compensated for up to a position deviation of $\pm 8.5^\circ$.

The clamping force of a link clamp is dependent on the lever length.

Follow safety instructions.

Type of operation:

- Thread connection.
- O-ring flange connection.
- Drilled channels.

Technical data:

- Max. operating pressure for piston diameters 16 and 25: 350 bar.
- Max. operating pressure for piston diameter 40: 200 bar.

Assembly:

See mounting contour.

Benefits:

- Integrated metal wiper.
- Partially retractable housing.
- Collision-free accessibility to the workpiece.
- Lineless pressure supply.
- Versatile mounting possibilities.

On request:

With position control.

Supplied with:

- 1x tension lever for link clamp.
- 4x DIN EN ISO 4762 cap screws grade 8.8.
- 4x Plastic caps.
- 2x O-rings 7x1.5 (for flange connection operating mode).

Drawing reference:

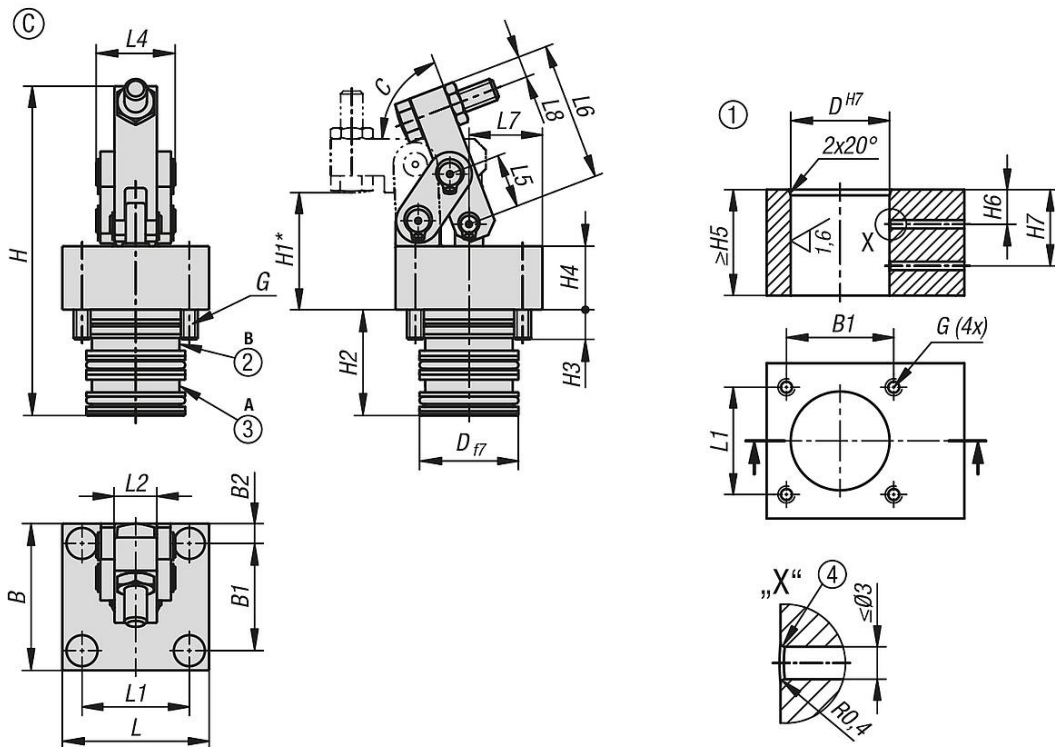
Link clamp, hydraulic, double-acting, style C drilled channels

Item description/product images

H1* = optimum clamping point; from -1.5mm until tension lever contact

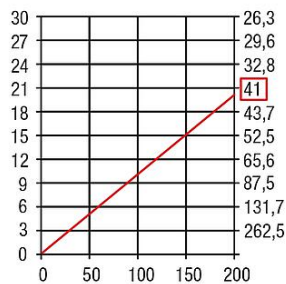
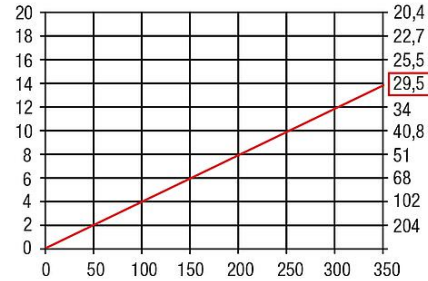
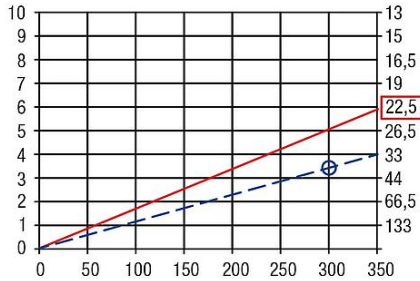
- 1) Mounting contour
- 2) Loosen
- 3) Clamp
- 4) Rounded edges
- 5) These holes are only closed with screw plugs by piston diameter 16

Drawings



Link clamp, hydraulic, double-acting, style C drilled channels

Drawings



Order No.	style	Piston Ø	Connection type	B	B1	B2	C (degrees)	D	G	H	H1	H2	H3	H4	H5	H6	H7
K1858.161304	C	16	drilled channels	52	38	7	69	35	M6x12	117	41,5	37,5	10,5	22,5	37,5	12,25	27
K1858.251304	C	25	drilled channels	72	56	8	65	50	M8x22	156	50	54	19	22	55	25,2	41,8
K1858.401304	C	40	drilled channels	85	62	13,5	65	70	M10x22	191	65	67,7	20	25	68	22-25	44-53

Order No.	style	Piston Ø	L	L1	L2	L4	L5	L6	L7	L8	Clamping force at 100 bar (kN)	Clamping force at 200 bar (kN)	Clamping force at 350 bar (kN)
K1858.161304	C	16	52	38	15	28	19	49	26	7,5	1,5	-	5,2
K1858.251304	C	25	72	56	24	44	24	63,5	36	10	3,9	-	13,8
K1858.401304	C	40	100	78	36	66	31,5	82,5	40,5	10	9,5	19	-