

# Connectors M8x1, bushing with screw lock, unshielded, style A, straight bushing

Item description/product images



## Description

### Material:

Housing: plastic.  
 Cable: PUR (4 pole PVC).  
 Insulation braid: PP (4 pole PVC).  
 Contact: copper alloy.  
 Contact surface: Au (gold).  
 Lock: nickel plated die-cast zinc.

### Version:

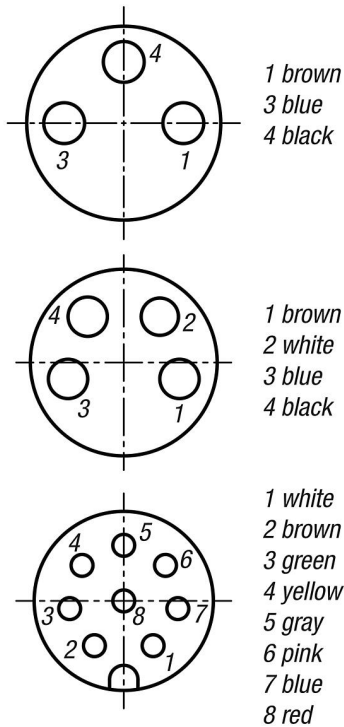
Bushing (female).  
 Housing color: black.  
 Cable color: black.

### Note:

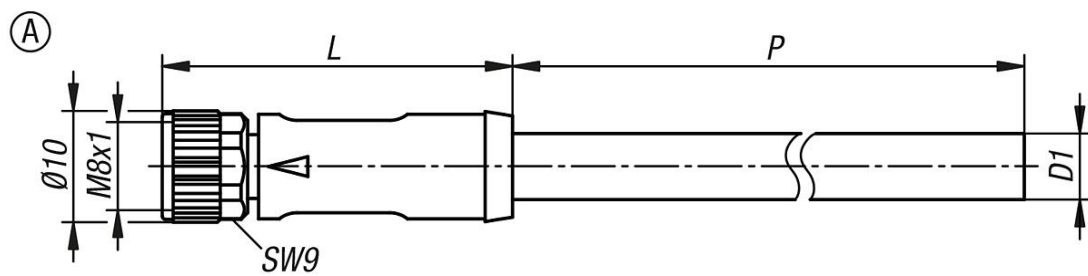
Connector with screw lock.  
 Connector moulded to cable.  
 Wire ID acc. to DIN 47100 color code.  
 Coding A. Recommended tightening torque for the lock 0.4 Nm.  
 The connectors are designed for use in plant, control and electrical appliance construction.

### Technical data:

No. of connection cycles:  $\geq 100$ .



## Drawings



Item No.	Version 2	style	Style definition	P	D1	L	No. of conductor x conductor cross-section	Safety rating	Operating voltage V	Rated surge voltage V
K1874.010X2000	3-pin	A	straight bush	2000	4,1	32	3 x 0,25 mm <sup>2</sup>	IP65/IP67	50 AC / 60 DC	1500
K1874.010X5000	3-pin	A	straight bush	5000	4,1	32	3 x 0,25 mm <sup>2</sup>	IP65/IP67	50 AC / 60 DC	1500
K1874.011X3000	-	A	straight bush	3000	4,8	32	4 x 0,25 mm <sup>2</sup>	IP65/IP67	50 AC / 60 DC	1500
K1874.011X5000	-	A	straight bush	5000	4,8	32	4 x 0,25 mm <sup>2</sup>	IP65/IP67	50 AC / 60 DC	1500
K1874.012X3000	8-pin	A	straight bush	3000	5,5	34	8 x 0,14 mm <sup>2</sup>	IP65/IP67	30 AC / 30 DC	800
K1874.012X5000	8-pin	A	straight bush	5000	5,5	34	8 x 0,14 mm <sup>2</sup>	IP65/IP67	30 AC / 30 DC	800

## Connectors M8x1, bushing with screw lock, unshielded, style A, straight bushing

Item No.	Rated current (40 °C) A	Conductive resistance (20 °C) Ω/Km	Contamination level	Nominal voltage V	Test voltage V	Cable bend radius moving
K1874.010X2000	4	79	3	300 AC	2500 AC	≥ 10 x D1
K1874.010X5000	4	79	3	300 AC	2500 AC	≥ 10 x D1
K1874.011X3000	4	79	3	300 AC	2000 AC	≥ 10 x D1
K1874.011X5000	4	79	3	300 AC	2000 AC	≥ 10 x D1
K1874.012X3000	1,5	78	3	300 AC	3000 AC	≥ 10 x D1
K1874.012X5000	1,5	78	3	300 AC	3000 AC	≥ 10 x D1

Item No.	Cable bend radius fixed	Number of bend cycles max.	Temperature range cable moving	Temperature range cable fixed	EMC capability	Halogen-free
K1874.010X2000	≥ 5 x D1	10000000 (25 °C)	-25 °C - +80 °C	-40 °C - +80 °C	-	yes
K1874.010X5000	≥ 5 x D1	10000000 (25 °C)	-25 °C - +80 °C	-40 °C - +80 °C	-	yes
K1874.011X3000	≥ 5 x D1	2000000 (25 °C)	-5 °C - +80 °C	-30 °C - +80 °C	-	no
K1874.011X5000	≥ 5 x D1	2000000 (25 °C)	-5 °C - +80 °C	-30 °C - +80 °C	-	no
K1874.012X3000	≥ 6 x D1	2000000 (25 °C)	-15 °C - +80 °C	-30 °C - +80 °C	-	no
K1874.012X5000	≥ 6 x D1	2000000 (25 °C)	-15 °C - +80 °C	-30 °C - +80 °C	-	no