

Pull handles, aluminum, style A

Item description/product images



Description

Product description:

This pull handle is characterized by its large size and pleasant haptics. Easy to clean due to its closed and smooth design.

Material:

Pull handle EN AW-6060.
Screw, nut and washer stainless steel.

Version:

Black or silver.

Assembly:

Style A from the front.

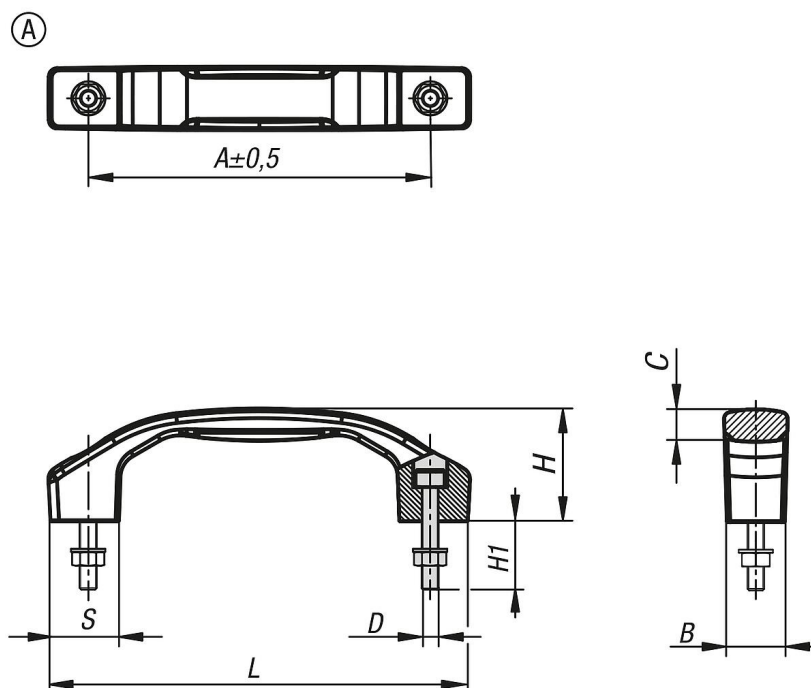
Benefits:

Element for opening and closing covers, panels and hoods.
Application fields: machine and plant construction, toolmaking and furniture industries.
Torsionally strong and user friendly.

Supplied with:

Style A includes fastening screws, washers and nuts.

Drawings



Order No.	style	Style definition	Main color	A	B	C	D	H	H1	L	S	Load capacity N
K1641.1100051	A	with through hole	black	100	17	9,5	M5	33	20	122	20	1000
K1641.1120061	A	with through hole	black	120	21	11,4	M6	39	25	146	24	1000

Pull handles, aluminum, style A

Order No.	style	Style definition	Main color	A	B	C	D	H	H1	L	S	Load capacity N
K1641.1140081	A	with through hole	black	140	24	14,2	M8	45	30	170	28	1000
K1641.1160081	A	with through hole	black	160	28	15,5	M8	52	30	194	32	1000
K1641.1180101	A	with through hole	black	180	31	16	M10	58	40	218	36	1000
K1641.1100053	A	with through hole	silver	100	17	9,5	M5	33	20	122	20	1000
K1641.1120063	A	with through hole	silver	120	21	11,4	M6	39	25	146	24	1000
K1641.1140083	A	with through hole	silver	140	24	14,2	M8	45	30	170	28	1000
K1641.1160083	A	with through hole	silver	160	28	15,5	M8	52	30	194	32	1000
K1641.1180103	A	with through hole	silver	180	31	16	M10	58	40	218	36	1000