

Spring hinges aluminum profile, 0.2 Nm, spring closed

Item description/product images



Description

Material:

aluminum 6060 T5.
Cover plug PA 6.6.

Version:

Black anodized

Note:

These hinges have stainless steel tension springs which enables doors and hatches to open or close automatically.

Opening angle 270°.

Spring torque:

M(0°): 0.08 Nm / M(90°): 0.15 Nm / M(180°): 0.23 Nm

Screw on using DIN 7991 countersunk screws.

The loading values given for the hinges are non-binding reference values without consideration of safety factors and exclude any liability. The values given are for information purposes only and do not constitute a legally binding assurance of properties.

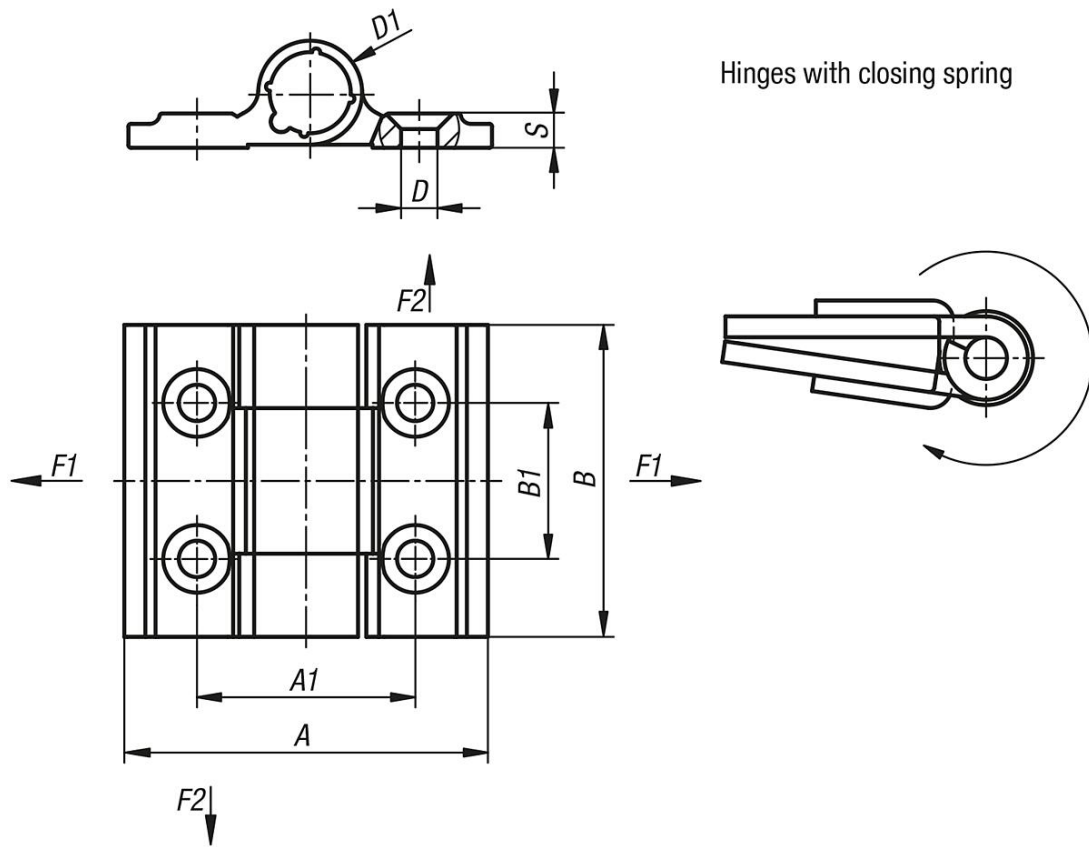
These load values were determined under laboratory conditions. Each user must determine individually whether the hinge is suitable for the respective application. Different materials onto which the hinges are installed and the type of mounting, weather conditions and wear can influence the determined values.

Temperature range:

From -20°C to +80°C

Spring hinges aluminum profile, 0.2 Nm, spring closed

Drawings



Hinges with closing spring

Order No.	Main color	Surface finish body	A	A1	B	B1	D	D1	S	F1 N	F2 N
K1178.353011	black	anodized	35	21	30	15	3,5	10	3,3	1210	1310
K1178.35301	colorless	anodized	35	21	30	15	3,5	10	3,5	1210	1310