



KIPP NORTH AMERICA



QUICKFINDER

Clamping technology

Standard elements

Operating parts



# LIST OF CONTENTS



(269) 932-1100  
(647) 862-7274



(269) 932-1015



us.info@kipp.com  
ca.info@kipp.com



www.kippusa.com  
www.kippcanada.ca

## QUICKFINDER 4

---

### COMPANY

Manufacturer competence:

TRUST IN KIPP 6

Locations 8

---

## PRODUCT LINES 10

---

## RANGE OF SERVICES 13

---

## OPERATING ELEMENTS | STANDARD ELEMENTS 15

---

## CLAMPING TECHNOLOGY 63

---

## SPECIAL SOLUTIONS 79



Reg. No. 002081 QM



### SERVICE HOURS

MONDAY-THURSDAY 8.00 AM - 5.00 PM

FRIDAY 8.00 AM - 3.00 PM

# QUICKFINDER

Quick overview of product categories



The handy KIPP QUICKFINDER leads quickly and assuredly to the correct products. Clearly summarized in categories, you receive a compact overview of dimensions, materials, versions and finishes.

HEINRICH KIPP WERK has highly trained customer service staff and expert technical advisers with many years of experience.

We can be reached during office hours at the telephone number (269) 932-1100 (647 862 7274).



Quick overview  
of product categories



Pictograms refer  
to the product groups  
in the KIPP catalogues



The most important  
characteristics as well as  
possible uses are quickly visible



## QUICKFINDER

### CAD data

A free download of CAD libraries is offered at [www.kippusa.com](http://www.kippusa.com) ([www.kippcanada.ca](http://www.kippcanada.ca)). You receive 2D and 3D formats online, in the common formats, which you can implement directly into the planning and production process.

# TRUST IN KIPP



HEINRICH KIPP WERK has been a quality partner to industry for more than 100 years.

We offer a comprehensive product spectrum with more than 70,000 elements in the sectors clamping technology, standard elements and operating parts.

We produce in our own machine shop located in Germany. This guarantees rapid response times and short logistics routes. Customers appreciate our vertical integration and many years of development experience.

Reliability. Durability. Sustainability.

This is what our owner managed company has stood for from the very beginning.



A handwritten signature in blue ink that reads "N. Kipp".

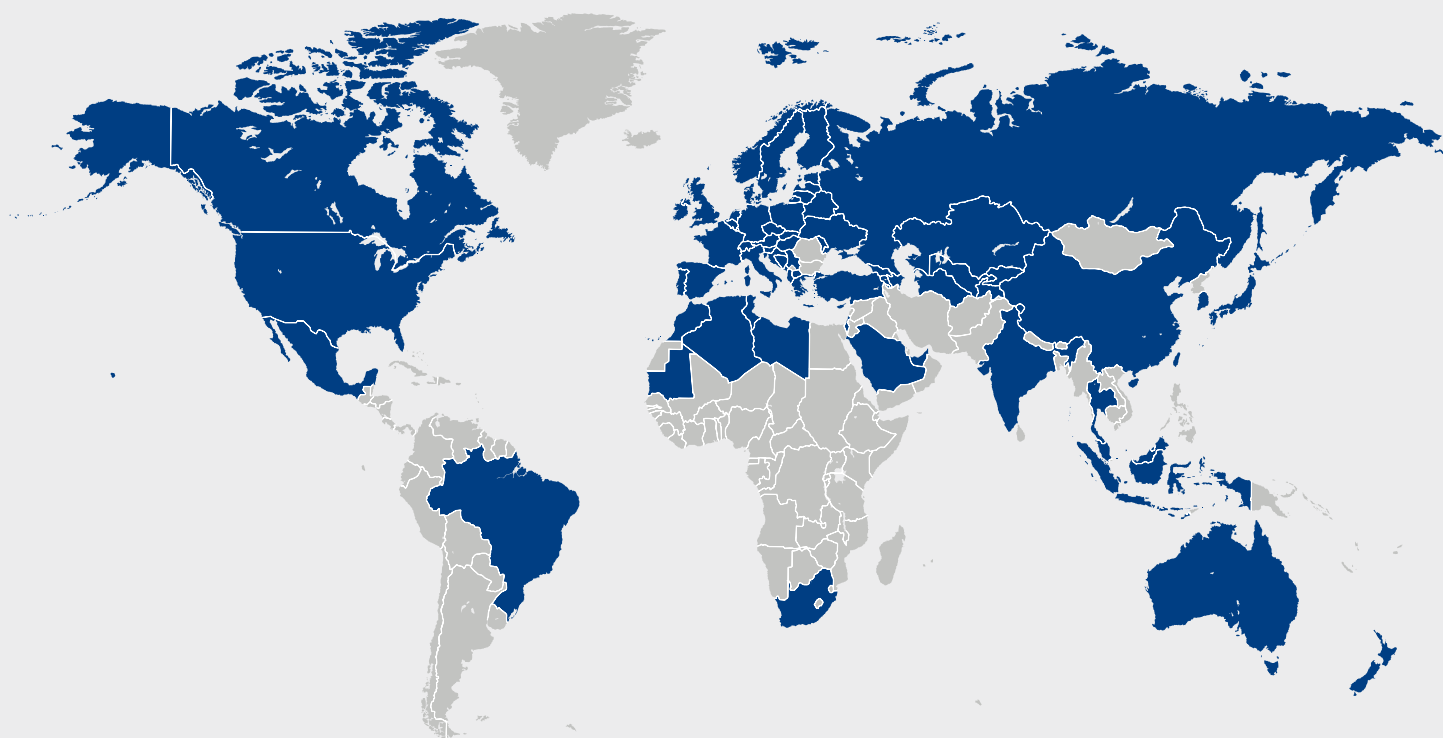
Nicolas Kipp

A handwritten signature in blue ink that reads "Heinrich Kipp".

Heinrich Kipp

# LOCATIONS

The HEINRICH KIPP WERK is represented worldwide with 12 subsidiary locations and over 50 agencies and guarantees a high delivery capacity internationally. We have a well-developed service and specialized consultants.



**HEINRICH KIPP WERK  
GmbH & Co. KG**  
Heubergstrasse 2  
72172 Sulz am Neckar  
[www.kipp.com](http://www.kipp.com)



**KIPP FRANCE SAS**  
Immeuble Blériot - Vélizy  
Espace  
13 Avenue Morane Saulnier  
78140 Vélizy-Villacoublay  
[www.kipp.fr](http://www.kipp.fr)

**KIPP SCHWEIZ AG**

Benzburweg 18A  
4410 Liestal BL  
[www.kipp.ch](http://www.kipp.ch)

**HEINRICH KIPP GmbH**

Traunufer Arkade 1  
4600 Thalheim bei Wels  
[www.kipp.at](http://www.kipp.at)

**KIPP CZ s.r.o.**

Vienna Point 2  
Víteňská 188/119d  
Dolní Heršpice, 619 00  
Brno  
[www.kipp.cz](http://www.kipp.cz)

**KIPP POLSKA Sp. z o.o.**

ul. Jeździecka 19/302  
53-032 Wrocław  
[www.kipp.pl](http://www.kipp.pl)

**KIPP NEDERLAND BV**

Willem Dreeslaan 251  
2729 NE Zoetermeer  
[www.kippcom.nl](http://www.kippcom.nl)

**KIPP SCANDINAVIA AB**

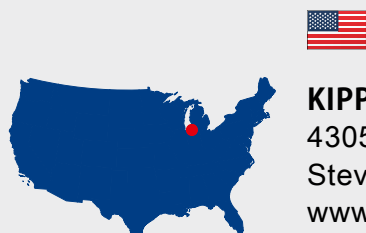
Skrantahöjdsvägen 40F  
691 46 Karlskoga  
[www.kipp.se](http://www.kipp.se)

**KİPP TURKEY LTD. ŞTİ.**

Cevizli Mahallesi,  
Zuhal Caddesi  
Ritim İstanbul Sit. A5 Blok  
Apt.  
No: 48E/182  
34846 Maltepe/İstanbul  
[www.kipp.com.tr](http://www.kipp.com.tr)

**KIPP ITALIA SRL**

Via Gaudenzio Ferrari,  
21 B  
21047 Saronno (VA)  
[www.kipp.it](http://www.kipp.it)

**KIPP Inc.**

4305 N Roosevelt Rd  
Stevensville, MI 49127  
[www.kippusa.com](http://www.kippusa.com)

**KIPP Ltd.**

6155 Tomken Rd,  
Unit #18  
Mississauga, ON,  
L5T 1X5  
[www.kippcanada.ca](http://www.kippcanada.ca)

# PRODUCT LINES

## **NOVOgrip**



Our NOVOgrip product line is the classic in the plastic sector. Well thought out in every detail. Sophisticated design, easy-grip form and efficient price/performance.

## **SYMPAtouch**



It's in the name. SYMPAtouch, our product line for maximum ergonomics. The soft, anti-slip material sits perfectly in the hand.

## **NATUREgrip**



Our NATUREgrip product range is environmentally friendly and produced from bioplastic which is made entirely from renewable raw materials.

## **MEDigrip**



MEDigrip is suitable for areas with high hygienic requirements. These operating parts contain micro-silver, which has an antibacterial effect on the surface.

## **FEATUREgrip**



With the new FEATUREgrip product range, KIPP has developed and offers smart components and solutions that deliver information and can be networked and so are suitable for Industry 4.0.

## **NOVOnox hygienic**



The stainless-steel products from the NOVOnox hygienic line target the foodstuff, pharmaceutical, chemical and packaging sectors.

### **Material and surfaces**

Besides the standard versions, other materials or grades can be supplied on request. At extra cost, different surface finishes such as matt or high-gloss trivalent passivated for steel parts, can be provided. In addition, for plastic coatings or injection-moulded plastic parts, other colour variants can be supplied on request.

### **RoHS / REACH / POP**

HEINRICH KIPP WERK supplies products that conform to the 2011/65/EU (incl. 2015/863/EU) directive. For exceptions, see the negative list. In accordance with REACH, we only use substances and compounds that are registered, not subject to authorisation under appendix XIV and not subject to any restriction under appendix XVII, and which are not part of (EU) 2019/1021 (POPs Regulation).

## 19" 19" TECHNOLOGY



Grips, rails and standard elements suitable for 19 inch systems. Compatible for applications in the IT sector, event technology, laboratories or computer centers.



## STAINLESS STEEL



Products marked with this symbol are made from stainless steel. The predominant material used here is the austenitic alloy 1.4305.



## ESD



These products are made from electrically conductive plastic. They can therefore be used in ESD secure areas where electrostatic sensitive components can often be found.



## ACCESSORIES alu profiles



The solution for connecting, clamping and holding aluminium profiles. All components perfectly match conventional profiles with 8 mm or 10 mm slot widths.



## DETECTABLE



Detectable products made from a special plastic can be quickly and reliably detected using detection systems.

### Thread versions

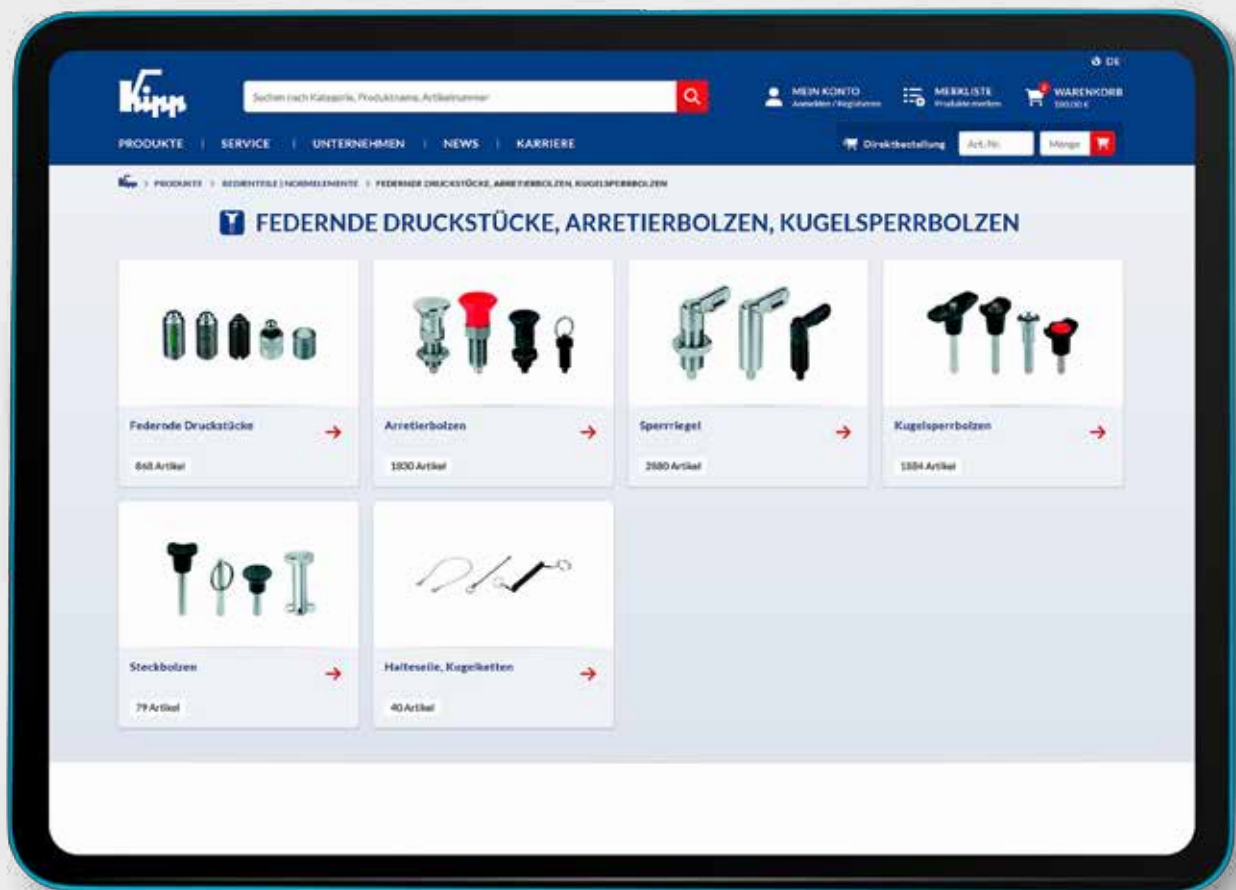
The threads are machined to the ISO DIN 13 tolerance class "medium" i.e. H6 for female threads and g6 for male threads. Male threads up to 60 mm long are generally supplied as a full thread. Screws from 70 mm long have 60 mm long threads.

Due to surface finish refinement, threads of aluminium grips may not be true to gauge. To toughen the material most of these threads are form pressed. The pull out resistance from aluminium with M5x10 is here 2000N.



## Find your product with just a few clicks in the KIPP webshop

- Order around the clock - 7 days a week
- 70,000 products in a structured overview
- All new products at a glance
- Quick and specific product search



[www.kippusa.com](http://www.kippusa.com)  
[www.kippcanada.ca](http://www.kippcanada.ca)



## Professional advice

KIPP has highly trained customer service staff and expert technical advisers with extensive experience.



## Delivery

The high-performance logistics system guarantees rapid response times and high supply availability. Customers can choose between standard, express or premium delivery.







OPERATING ELEMENTS |  
STANDARD ELEMENTS

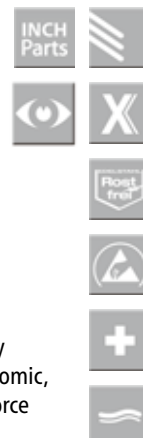


## Adjustable handles



### Product versions:

Thread Ø:	M5 - M16, #8 - 5/8
Thread type:	internal thread, external thread
Thread length:	10 - 90 mm
Thread depth:	9 - 27 mm
Handle length:	37 - 126 mm
Materials:	steel, stainless steel, die-cast zinc, plastic
Versions:	with pushbutton, with protective cap, Hygienic USIT®, flat, antistatic, antibacterial, metal detectable, visually detectable, 2-component, ECO, with thrust pad, ergonomic, non-adjustable, with safety function, with clamping force intensifier
Surfaces:	bright, plastic coated, bright chrome-plated, high gloss polished, hammer paint finish
Colors:	black, gray, red, green, yellow, blue, orange, silver



### Product description:

Adjustable handles are intended for manual alignment with fixation tasks and clamping applications. There is a lot of variation in this product group due to the range of designs, materials and colors available. These classic elements can be used in a wide variety of applications. However, they are most suitable for machine and plant construction, and in toolmaking.



## Cam levers



### Product versions:

Thread Ø:	M3 - M10, #6 - 3/8
Thread type:	internal thread, external thread
Thread length:	10 - 50 mm
Height:	13 - 29 mm
Handle length:	41.7 - 110 mm
Clamping force:	1.5 - 8 kN
Materials:	stainless steel, steel, plastic, cast aluminum
Versions:	adjustable, quick lock, elastomer lock
Surfaces:	bright, powder-coated, electrolytic polished, abrasive blasted
Colors:	black, red, silver



### Product description:

Cam levers are ideal for quick fixation. The products are available in various materials and colors. They are used in machine and plant construction, in toolmaking, and in medical and rehabilitation technology.





## Tension levers / flat tension levers



### Product versions:

Thread Ø:	M6 - M24, 5/16 - 3/4
Thread type:	internal thread, external thread
Thread length:	15 - 90 mm
Thread depth:	14 - 27 mm
Materials:	stainless steel, steel
Versions:	safety function, flat
Surfaces:	bright, plastic-coated, black oxidized
Colors:	black, silver

### Product description:

Tension levers are used for simple clamping tasks. The threaded insert is available in different versions and sizes. Tension levers are used in machine and plant construction.



## Knurled nuts / knurled screws / knurled knobs



### Product versions:

Thread Ø:	M3 - M12, #8 - 1/2
Thread type:	internal thread, external thread
Thread length:	10 - 60 mm
Thread depth:	5 - 22 mm
Outside diameter:	12 - 63 mm
Materials:	stainless steel, free-cutting steel, Q&A steel, thermoplastic, thermoset, biopolymer (beech), aluminum
Versions:	quick-clamp function, flat, high, low, antistatic, metal detectable, visually detectable, for screws
Surfaces:	bright, black oxidized
Colors:	black, gray, red, green, yellow, blue, orange, silver

### Product description:

Nuts, screws and knurled knobs are particularly suitable for manual positioning and clamping. They enable smooth, tool-free assembly. The various designs, thread sizes and materials can be used in a whole host of applications in machine and plant construction as well as toolmaking.





## Palm grips / star grips / clamping grips

### Product versions:



Thread Ø:	M4 - M20, #10 - 1/2
Thread type:	external thread, internal thread, through-hole, blind hole, thread drilled out
Thread length:	10 - 60 mm
Thread depth:	7.5 - 36 mm
Outside diameter:	25 - 105 mm
Materials:	aluminum, stainless steel, gray cast iron, thermoset, thermoplastic, biopolymer, fiberglass reinforced plastic
Versions:	cover, locating bushing, quick-acting, high collar, extended hub, safety lanyard, antibacterial, flat, high, soft, ergonomic, tapped bushing, with prominent steel bushing, metal detectable, visually detectable, with clamping force intensifier
Surfaces:	bright, ground, ground and polished, abrasive blasted
Colors:	black, slate gray, light gray, red, yellow, silver, blue

### Product description:

Clamping grips, star grips and palm grips are primarily used as retaining and fastening elements for manual tasks. An ergonomic design is among the key features of these products. They come in a range of different materials, sizes and shapes, allowing them to be used in applications such as machine construction and the chemical industry.



## Knobs



### Product versions:

Thread Ø:	M2-M12, #2 - 3/8
Thread type:	external thread, internal thread
Thread length:	10-20 mm
Thread depth:	4-20 mm
Outside diameter:	14-63 mm
Materials:	steel, stainless steel, aluminum, thermoplastic, biopolymer (beech)
Versions:	antistatic, antibacterial, high collar, low collar, Hygienic USIT®
Surfaces:	bright, ground and polished, blasted, galvanized and blue passivated, anodized
Colors:	black, red, yellow, light gray, dark gray, slate gray, graphite black

### Product description:

Knobs can be used as a clamping, retaining and fastening element. They are available in various designs and thread sizes. Knobs are primarily used for manually adjusting assemblies and machines.







## Wing grips / T-grips / grip nuts / grip screws

### Product versions:



Thread Ø:	M3-M12 #8 - 3/8
Thread type:	external thread, internal thread
Grip length:	22-90 mm
Thread length:	8-50 mm
Materials:	stainless steel, polyamide, thermoplastic, steel, biopolymer (beech)
Versions:	one-sided, for screws, antibacterial, antistatic, Hygienic USIT®, Hygienic DESIGN, metal detectable, visually detectable
Surfaces:	bright, ground, ground and polished, abrasive blasted
Colors:	black, gray, red, green, yellow, blue, white, silver, slate gray, graphite black

### Product description:

Wing grips and T-grips as well as grip nuts and screws are used as clamping, retaining and fastening elements in various applications. They are standard elements in machine and plant construction and function as manual controls on assemblies and machines.



## Ball knobs / spherical knobs

### Product versions:



Thread Ø:	M4 - M12, #8 - 1/2
Thread type:	external thread, internal thread
Thread length:	10-40 mm
Thread depth:	6-23 mm
Outside diameter:	16-50 mm
Materials:	thermoset, thermoplastic, stainless steel, aluminum, biopolymer (beech)
Versions:	rotating, tapped bushing
Surfaces:	bright, polished
Colors:	black, gray, red, yellow, blue, orange, silver

### Product description:

Ball knobs and spherical knobs are used as clamping, retaining and fastening elements. They are primarily used for manually adjusting assemblies and machines.





## Torque grips



### Product versions:

Thread Ø:	M5-M12
Thread type:	external thread, internal thread
Thread length:	30-60 mm
Thread depth:	5-13 mm
Outside diameter:	26-80 mm
Materials:	thermoplastic
Colors:	black, gray, red, yellow, blue, orange

### Product description:

Torque grips can also be used as clamping, retaining and fastening elements. They are primarily used for manually adjusting machines and assemblies. Depending on the version, the torque is signalled via clicking or free turning.



## Pull handles / tubular handles



### Product versions:

Fastening hole:	Ø5.5 - Ø9 mm / M3 - M10
Hole spacing:	55 - 600 mm
Length:	67 - 633 mm
Load capacity:	300 - 3700 N
Materials:	stainless steel, investment cast stainless steel, round aluminum, oval aluminum, aluminum profile, aluminum, thermoplastic, SEBS, SG iron, thermoset, PP, round steel, steel
Versions:	angled, soft inner face, high temperature resistant, antibacterial, antistatic, with/without end cap, with/without baseplate, oblique, oval, round, fold-down, screw head counterbore, threaded insert, screw-on one side, compact, adjustable, Hygienic USIT®, with electric switching function, metal detectable, visually detectable
Surface finish:	bright, abrasive blasted, polished, anodized, ground, chromed
Colors:	black, gray, orange, red, silver, blue

### Product description:

Pull handles are particularly suitable for opening and closing covers, panels or hoods. What makes ours special is the fact that they have good haptics, are exceptionally stable and have an ergonomic design. The product range offers a variety of sizes, shapes, materials and colors.







## Recessed handles / recessed fold-down handles

19"



### Product versions:

Length:	90-170 mm
Height:	40-79 mm
Load capacity:	250-1000 N
Materials:	aluminum profile, die cast aluminum, thermoplastic, stainless steel, polyamide
Versions:	fold-down, clip-in
Surfaces:	anodized, bright, polished
Colors:	black, light gray, silver

### Product description:

Recessed handles can be installed quickly and easily due to their ergonomic shape. The fold-down version enables installation even in places where only a shallow installation depth is available. Recessed handles are available in a range of versions and colors. Recessed fold-down handles are ideally suited to crates and lids.



## Ledge handles



### Product versions:

Fastening hole:	M4-M8
Hole spacing:	30-120 mm
Load capacity:	200-1000 N
Materials:	profile aluminum, profile stainless steel
Surfaces:	anodized, polished.
Colors:	black, silver

### Product description:

Ledge handles are extremely versatile and are used as elements for opening and closing covers, panels and hatches. They are available in various versions, designs and materials. Ledge handles are used in machine and plant construction as well as toolmaking.



## Handwheels



### Product versions:

Fastening hole:	8-43 mm, 0.312" - 1"
Outside diameter:	80-500 mm
Materials:	aluminum, thermoset, thermoplastic, gray cast iron, polyamide, stainless steel
Versions:	rotating / fixed / no handle, straight wheel rim, pre-drilled, reamed hole, fold-down handle, safety cylinder grip, with keyway, without keyway
Surfaces:	bright, polished, powder-coated
Colors:	black, dark gray, green, red, yellow, blue, silver

### Product description:

Handwheels are used to position and adjust shafts and spindles manually. They are predominantly used as control elements in machine and plant construction. They are also suitable for opening and closing valves in hydraulic and steam fixtures.



## Grips for handwheels



### Product versions:

Thread Ø:	M3-M16, #8 - 5/16
Thread type:	internal thread, external thread
Thread length:	6-70.5 mm
Thread depth:	7.5-26 mm
Materials:	steel, stainless steel, aluminum, thermoset, thermoplastic
Versions:	fixed cylinder grips, rotating, folding, self-righting safety cylinder grips, oval, taper grips, machine handles, moulded thread
Surfaces:	bright, galvanized and blue passivated, polished
Colors:	black, silver

### Product description:

Machine handles, cylinder grips, taper grips and ball grips are used in a wide variety of applications.



## Position indicators



### Product versions:

Receiving hole:	Ø 10-Ø 30 mm
Width:	22 - 48 mm
Height:	33 - 71 mm
Length:	26 - 38.8 mm
Materials:	plastic
Versions:	programmed, not programmed
Colors:	orange, black

### Product description:

Position indicators enable the precise measurement of the travel path. Despite their small size, they are extremely precise. They are especially suitable for small shaft diameters. Position indicators are available as either mechanical or digital indicators.



## Crank handles



### Product versions:

Thread Ø:	7-17, SW (square bar) 10-22, 0.375" - 0.5"
Height:	13 - 44 mm
Materials:	aluminum, steel, stainless steel, thermoplastic, cast iron
Versions:	rotating, fold-down
Surfaces:	bright, zinc-plated, abrasive blasted, powder-coated
Colors:	black, silver

### Product description:

Crank handles are highly recommended for longer travel paths. They are fastened axially or radially using cross-pinning or a socket head screw.





## Quarter-turn locks



### Product versions:

Actuator:	square bar, slot, handle, double lug
Spanner:	T-grip, L-grip
Tongue length:	25 - 60 mm
Tongue spacing:	4.5 - 74 mm
Wall thickness:	5 - 40 mm
Materials:	die-cast zinc, steel, stainless steel, plastic, thermoset
Versions:	small/long version, lockable, stepped cam, variable compression, flat, free turning, Hygienic DESIGN
Surfaces:	chromed, powder-coated, bright, polished, plastic coated
Colors:	black, red, silver

### Product description:

Quarter-turn locks are locks for hatches, control cabinets, steel cabinets and machine doors. They are sturdy and have an optional cylinder lock. They are used in control cabinet construction, in all transport sectors, as well as in service and logistics vehicles. If required, quarter-turn locks can be installed pre-assembled. In most cases, the tongues can be flexibly combined with other quarter-turn locks.



## Quarter-turn clamp lock



### Product versions:

Actuation:	Twist knob, slot, cross slot, knurled knob, star grip
Wall thickness:	6 - 20 mm
Clamping force:	up to 400 N
Materials:	Steel or stainless steel
Twist knob:	Plastic or stainless steel

### Product description:

Quarter-turn clamp locks are used as locking elements for quickly and easily replacing and securing fixtures, plates or hatches. As a practical alternative to conventional quarter-turn locks, quarter-turn clamp locks act as toolless operating elements in machine construction, where their function method is strongly reminiscent of the ball lock pin.





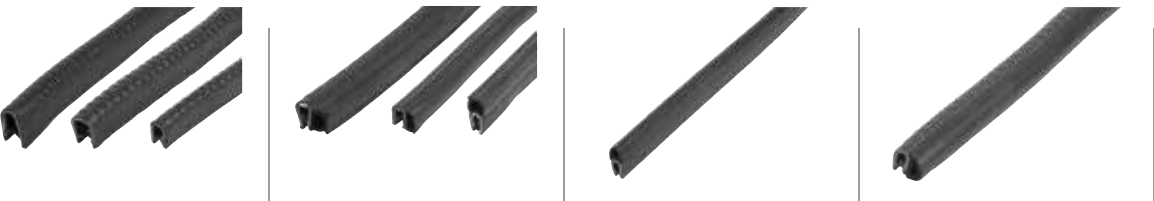
## Edge protection profiles



<b>Product versions:</b>	
Width:	8 - 11 mm
Height:	10 - 22 mm
Length:	2000 - 50,000 mm
Materials:	PVC, EPDM, EPDM foam rubber
Versions:	with integrated steel retaining strip / steel wire core
Colors:	black

**Product description:**

Edge protection profiles are used in machine construction to cover and decorate the sharp edges of sheet metal. They are installed quickly and easily by pressing on by hand. No extra adhesive or fastening material is required. The optional EPDM foam rubber also provides a seal against moisture, dust and dirt.



## Accessories for quarter-turn locks



<b>Product versions:</b>	
Materials:	plastic thermoplastic, die-cast zinc
Versions:	dust cap, opening grip, key
Surfaces:	chromed, blue powder-coated
Colors:	black, silver, blue

**Product description:**

Our extensive range of quarter-turn locks are supplemented by additional accessories such as opening grips, keys and dust caps which provide additional protection if required.





## Hinges

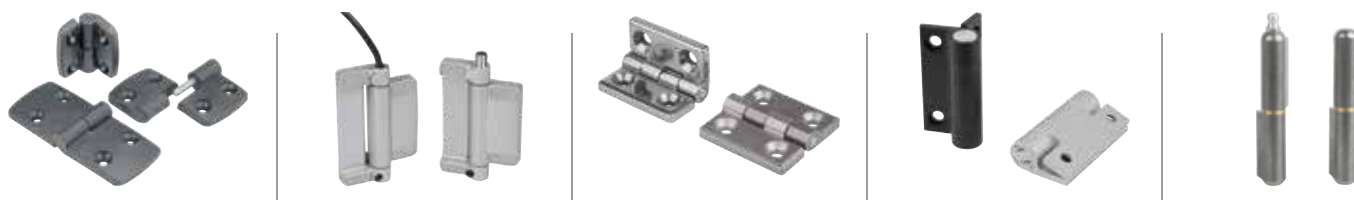


### Product versions:

Width:	28-240 mm
Fastening type:	weldable, fastening holes, fastening screws, fastening nuts, bushings, elongated holes
Materials:	thermoplastic, aluminum, die-cast aluminum, die-cast zinc, stainless steel, steel
Versions:	lift-off right/left, fixed, guide tabs, elongated holes, clamping function, detent, adjustable friction, closing/opening spring, elect. switching function, inset
Surfaces:	bright, abrasive blasted, polished, electro zinc-plated, anodized, chromed, powder-coated

### Product description:

Hinges are used in furniture and traditional machine construction as well as on other equipment, where they are mounted on doors, hatches and hoods, etc. Classic hinges are available made from plastic, aluminum, steel, sheet metal and stainless steel.



## Levelling feet



### Product versions:

Thread Ø:	M10 - M30
Thread length:	15 - 225 mm
Height:	7 - 32 mm
Plate Ø:	28.5 - 120 mm
Load rating:	1.5 - 55 kN
Materials:	steel, stainless steel, plastic
Versions:	with hexagon, with knurled base, with hole, height-adjustable, Hygienic DESIGN
Surfaces:	zinc-plated, bright, painted, polished

### Product description:

Levelling feet provide an easy way of counteracting any unevenness in the floor. They are used for alignment purposes to ensure that the equipment is installed securely. Levelling feet are available with vibration absorption and structure-borne sound absorption.





## Threaded spindles



### Product versions:

Thread Ø: M6-M24  
 Thread length: 15-200 mm  
 Materials: Steel, stainless steel  
 Surfaces: Bright, black oxidized, blue passivated

### Product description:

Threaded spindles are required as components for assembling swivel feet and levelling feet. Depending on the application, the threaded spindles may need to be coordinated with the plates. If desired, threaded spindles and plates can be ordered pre-assembled.



## Plates



### Product versions:

Plate Ø: 30 - 175 mm  
 Load rating: 0.2 - 55 kN  
 Materials: steel, stainless steel, die-cast zinc, plastic  
 Versions: antistatic, with extension, with vibration absorption, with rubber base  
 Surfaces: bright, zinc-plated, chromed, polished, powder-coated

### Product description:

Plates, like threaded spindles, are also required as components for assembling levelling and swivel feet. Plates and threaded spindles can be combined in any configuration. The extra anti-slip plate absorbs vibrations and prevents the foot slipping, making it more stable.







## Levelling feet accessories



### Product versions:

Materials: Steel, stainless steel, plastic  
 Versions: Thrust pads, thrust spindles, ball joints, thread caps, screw plugs, caps  
 Surfaces: Bright, black oxidized, polished

### Product description:

Possible accessories for levelling feet include caps for the feet that protect against scratch marks and tube inserts that act as a fastening element.



## Tube connectors



### Product versions:

Diameter: 12 - 50 mm, 0.5" - 2"  
 Square bar: 20 - 40 mm, 0.75" - 1.5"  
 Materials: aluminum, stainless steel, plastic, steel  
 Versions: cross piece, T-angle, angle, foot, flange, joint, ball joint, linear actuator, reducer sleeve, round tube, square tube  
 Surfaces: vibratory ground, bright, polished, powder-coated

### Product description:

Tube connectors are ideal for assembling round and square profiles. A suitable clamping lever for fastening can be supplied on request.







## Square tube connectors

INCH  
Parts



### Product versions:

Sizes: 20 - 30 mm, 1"  
Materials: plastic, aluminum  
Versions: connecting piece, right angle, star, joint, square tube, finned square tube  
Colors: black, anodized

### Product description:

Connectors are ideal for assembling square profiles.



## Monitor brackets

INCH  
Parts

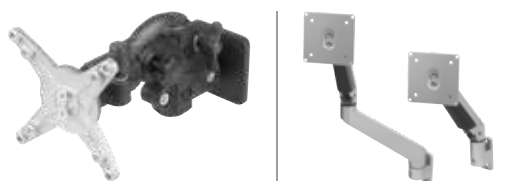


### Produktvarianten:

Length: 88 – 720 mm  
Materials: Steel, aluminum, plastic  
Versions: compact, with rotary flange, with ball joint, wall bracket, profile bracket, connection plate, support arm, keyboard shelf, tablet holder, height adjustable  
Surface: black, bright, painted, electro zinc-plated

### Produktbeschreibung:

Monitor mounts allow screens, tablets and keyboards to be attached to a pipe connection system.





## Accessories for aluminum profiles



**Product versions:**

Materials:	Steel, die-cast, plastic
Versions:	Straps, angle sets, profile sliders, clamping angles, joints, covers, cable holders, sensor holders, foot plates
Surface finish:	bright, electro zinc-plated

**Product description:**

The answer to connecting, clamping and holding aluminum profiles. All components are a perfect match for modern profiles with 8 mm or 10 mm slot widths.



## Telescopic slides



**Product versions:**

Length:	150 - 1524 mm
Travel:	133 - 1524 mm
Load capacity per pair:	10 - 300 kg
Materials:	steel, stainless steel, aluminum
Versions:	electro zinc-plated, bright

**Product description:**

Telescopic slides are used in drawers and pull-out systems. They are easy to handle and offer a great deal of stability. They are available with partial, full and over-extension.





## Latches



### Product versions:

Retaining force N: 500-30,500 N  
Materials: steel, stainless steel  
Versions: with spring clip, draw bail, release, adjustable  
Surfaces: galvanized, blue passivated, bright

### Product description:

Latches are used as simple locks for covers, cladding and containers in machine, plant and container construction. The clamping stroke exceeds the dead center point, which makes them able to withstand vibrations.



## Snap locks



### Product versions:

Maximum operating load: 310 N  
Materials: plastic  
Versions: folding, snap-in, with knob, with twist knob, lockable  
Colors: black, white, beige, silver

### Product description:

Snap locks are intended for flush installation in doors, hatches and hoods. With the snap function, the door can be locked securely by simply pushing it shut. Snap locks can be used in indoor and outdoor areas in ship/boat building, transport, the packaging industry, medical technology, and the automobile industry.





## Slam latches



<b>Product versions:</b>	
Actuation:	square bar, double lug, key
Materials:	aluminum
Versions:	with integrated safety function
Surfaces:	powder-coated
Colors:	black

**Product description:**  
Slam latches are used for simply and securely locking doors and hatches. These products are also available with integrated safety function.



## Toggle clamps



<b>Product versions:</b>	
Hand force:	50 - 500 N
Retaining force:	250 - 15,000 N
Clamping force:	170 - 3900 N
Materials:	steel, stainless steel
Versions:	horizontal, vertical, with safety interlock, antistatic, with force sensor
Surface finish:	bright, carbonitrided and black oxidized, electro zinc-plated
Grip color:	black, red, blue, orange

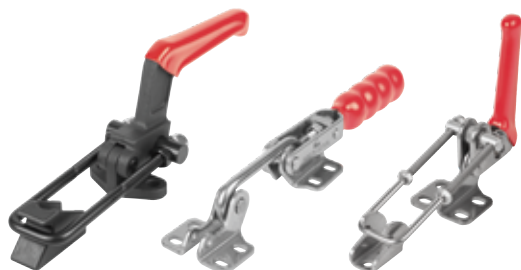


**Product description:**  
Toggle clamps are intended for assembly and clamping fixtures and are used in machine construction, metalworking and woodworking. Due to their slim design, toggle clamps can be easily integrated into tight spaces.





## Toggle clamp latches / toggle clamp hooks



### Product versions:

Hand force N:	80-600 N
Tractive force N:	1500-30,000 N
Retaining force N:	2000-40,000 N
Materials:	steel, stainless steel
Versions:	horizontal, vertical, with catch plate
Surfaces:	galvanized, chromed, bright
Grip color:	red, orange

### Product description:

Toggle clamp latches and hooks are ideal as an assembly and clamping fixture for quick closing and fastening of lids and hatches.



## Push-pull toggle clamps

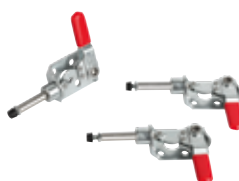


### Product versions:

Hand force N:	40 - 200 N
Retaining force N:	500 - 50,000 N
Clamping force N:	500 - 7000 N
Materials:	steel, stainless steel, ductile iron
Versions:	with mounting bracket, without mounting bracket, mini, with reversible hand lever
Surfaces:	zinc-plated, chromated, phosphated
Grip color:	blue, red, orange

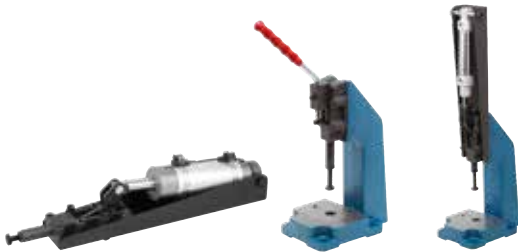
### Product description:

Push-pull toggle clamps act as an assembly and clamping fixture in machine construction and metalworking. As push-pull toggle clamps lock in both closed and open positions, they can be operated by either pushing or pulling.





## Pneumatic clamps



### Product versions:

Retaining force N:	1000-25,000 N
Clamping force N:	800-8000 N
Operating pressure in bar:	2-6 bar
Materials:	steel, cast steel
Versions:	horizontal, vertical
Surfaces:	galvanized, chromed, black oxidized, phosphated

### Product description:

Pneumatic clamps are especially suitable for metalworking and woodworking. Due to the fact they are easy to operate, they are ideal for automated, efficient and quick clamping tasks. The pneumatic cylinder is available with double-action function without end position damping.



## Toggle clamp accessories



### Product versions:

Materials:	steel, stainless steel, plastic, aluminum
Versions:	plastic grips, clamping spindles, angle brackets, nuts, thrust pads, protective caps, thrust screws, adapter block, adapter plate, status sensor
Surfaces:	zinc-plated, chromed, bright, phosphated, anodized

### Product description:

Accessory parts are used to replace or add to individual components.



## Clamping units



**Product versions:**

Materials: steel, cast, aluminum

Versions: clamp straps, clamp strap units, riser blocks, connecting screws, power clamp, thrust pads

Surfaces: galvanized, painted, black oxidized

**Product description:**

Clamping units are used to clamp workpieces. Various types are available.



## Clamp straps



**Product versions:**

Materials: steel

Versions: clamping attachment round, offset, double-sided, movable

Surfaces: black oxidized

**Product description:**

Clamp straps used in machine and fixture construction and in toolmaking are used to clamp workpieces and components. They are very versatile, made of carbon steel and are available in various designs.



## Hook clamps



### Product versions:

Materials:	steel
Versions:	with protective insert, elongated clamp strap unit, with collar, with mounting bracket, ground, hook clamp holder
Surfaces:	black oxidized, ground, tempered

### Product description:

Notable features of the hook clamps are that they can be used in a wide range of applications and do not require much space. For example, they can be used in the construction of machines, tools and fixtures.



## Swing clamps



### Product versions:

Retaining force N:	800 - 6000 N
Hand force N:	100 - 600 N
Materials:	steel, cast
Versions:	heavy, mini, pneumatic
Surfaces:	nickel-plated, black oxidized, ground, anodized, tempered, nitrided

### Product description:

Swing clamps are used where the clamping points must be free when the workpiece is loaded or removed. They are actuated manually or pneumatically. They are predominantly used in machine construction, fixture construction and toolmaking. They can be installed either horizontally or vertically.







## Pull and thrust clamps



### Product versions:

Clamping force N:	900 - 8000 N
Retaining force N:	2000 - 14,000 N
Materials:	steel
Versions:	heavy, pneumatic, actima clamping element, clamping pin, clamping screws
Surfaces:	bright, ground, black oxidized, hardened

### Product description:

Pull clamps and thrust clamps are suitable for simultaneously clamping and positioning workpieces. They are actuated manually or pneumatically. Different types can be mounted either horizontally or vertically.



## Side clamps



### Product versions:

Retaining force kN:	3 - 46 kN
Materials:	steel, cast
Versions:	with rest pad, with support, with square washer
Surfaces:	black oxidized, tempered, anodized, hardened

### Product description:

Some side clamps hold workpieces in place by rotating a spiral cam which exerts pressure on the swivel jaw, simultaneously producing a positive down force.



## Clamping cams



### Product versions:

Materials:	steel, aluminum, plastic, brass
Surface finish:	black oxidized, electro zinc-plated, hardened, brass coated, ground, tempered, anodized
Versions:	fixture clamps, side clamps with cam, style-fit cam clamps, cam screws

### Product description:

Clamp eccentrics are particularly suitable for side-clamping to allow vertical machining of the workpiece. With their compact design, they are suitable for applications in cramped space conditions.



## Toe clamps



### Product versions:

Retaining force kN:	2 - 40 kN
Tightening torque Nm:	2.7 - 200 Nm
Materials:	steel
Versions:	adjustable, stepped, flat clamp, rack plates, fixed jaw
Surfaces:	black oxidized, tempered, ground, hardened

### Product description:

Toe clamps have a positive down force. Their low height prevents protruding edges.



## Wedge clamps



### Product versions:

Thread Ø:	M4 - M16
Clamping range min. - max.:	12.3 - 13.1 mm to 101.6 - 103.9 mm
Retaining force kN:	11 - 60 kN
Tightening torque Nm:	3 - 210 Nm
Materials:	steel, aluminum profile
Versions:	double, with machining allowance
Surfaces:	anodized, black anodized, hardened

### Product description:

Wedge clamps are suitable for clamping both single and multiple workpieces. Their compact design allows space-saving series clamping.



## T-slot clamps



### Product versions:

Materials:	steel, stainless steel
Versions:	low-profile clamp, flat clamp
Surfaces:	bright, hardened, nickel-plated, black oxidized

### Product description:

T-slot clamps produce a positive down force when the workpiece is clamped. They are suitable for flat workpieces.





## Centering clamps



### Product versions:

Retaining force kN:	0.5 - 45 kN
Tightening torque Nm:	0.7 - 650 Nm
Materials:	steel, stainless steel
Versions:	with balls, hexagon, internal thread, external thread, mandrel collet, shaft clamping units
Surfaces:	bright, black oxidized, hardened, ground

### Product description:

These centering clamps allow workpieces to be centered on and clamped in a bore. The advantages of centering clamps include precise self-centering, distortion-free clamping and a low overall height.



## Clamping elements for grid systems



### Product versions:

Actuation:	adjustable handle, hexagon
Materials:	steel, stainless steel, POM, die-cast zinc
Surfaces:	black oxidized, powder-coated, phosphated, galvanized and blue passivated.

### Product description:

These clamping pins are perfect for fixing standard stop elements with various thicknesses to hole grid boards / welding tables with hole Ø 16 mm or 28 mm.





## Spring plungers

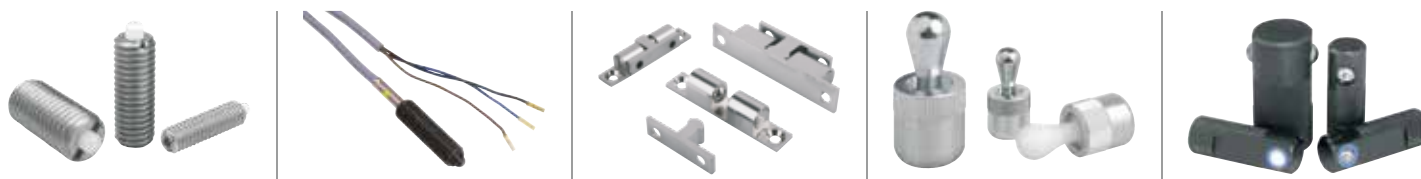


### Product versions:

OD:	M3 - M24, Ø2.5 - Ø16 mm, #8 - 5/8, Ø1/4" - Ø5/8"
Length:	4 - 80 mm
Travel:	0.4 - 40 mm
Initial spring force:	0.4 - 95 N
Final spring force:	2.5 - 240 N
Materials:	steel, stainless steel
Versions:	hexagon socket, slot, with head, proximity switch, AF, with ball, with thrust pin
Surface finish:	black oxidized, bright

### Product description:

Spring plungers are used for indexing, positioning and fixing components. As they are extremely versatile and easy to install, spring plungers are used in fixtures, automotive, machine construction, furniture, electronics, and household goods.



## Indexing plungers



### Product versions:

Pin diameter:	3 - 25 mm, 1/4" - 1"
OD:	Ø5 - Ø50 mm, M6 - M24
Length:	10 - 106 mm
Travel:	3.5 - 44 mm
Materials:	steel, stainless steel, plastic
Versions:	hardened, not hardened, with lock, with thread lock, short version, with long indexing pin, with five lobe grip, with markings, without collar, pneumatic, Premium with conical pin, with locking and clamping grip, with visual locking indicator, with remote actuation, with status sensor, hardwired, with cam lever, Hygienic USIT®, with twist knob
Surface finish:	black oxidized, bright, hardened and ground, electro zinc-plated

### Product description:

Indexing plungers facilitate fast indexing and locking of moving components. Mushroom grips makes them easy to operate.





## Cam-action indexing plungers



### Product versions:

Pin diameter:	4 - 12.9 mm
Square:	8 - 16 mm
Thread:	M10 - M20; 3/8" - 3/4"
Length:	36.5 - 73.5 mm
Travel:	6 - 13 mm
Materials:	steel, stainless steel, aluminum, brass
Versions:	smooth, weldable, with stop, latch
Surfaces:	black oxidized, bright, electro zinc-plated, chrome plated

### Product description:

Cam action indexing plungers can be used for all types of locking and fixating mechanisms, especially where the indexing pin must not be allowed to protrude. The lock is released by turning the grip 180°.



## Ball lock pins



### Product versions:

Pin diameter:	5 - 19 mm, 3/16" - 3/4"
Length:	10 - 246 mm
Shear force double shear kN:	22 - 258 kN
Materials:	steel, stainless steel, plastic, Zamak
Versions:	L-grip, T-grip, with mushroom knob, with bracket, without knob, with axial lock, adjustable grip, with twist knob, with twist lock, with head lock, with high shear strength, lockable

### Product description:

Ball lock pins are used to join and fasten machine parts and workpieces quickly and easily. The axial lock is released by pressing the push button.





## Locking Pins



### Product versions:

Pin diameter:	6 - 12 mm, 1/4" - 1/2"
Length:	10 - 80 mm
Shear force double shear kN:	22 - 86 kN
Materials:	steel, stainless steel
Versions:	with magnetic axial lock, with key ring, with folding latch, with axial lock

### Product description:

Locking pins are used for quick and easy fastening and joining of components or workpieces.



## Retaining cables / ball chains

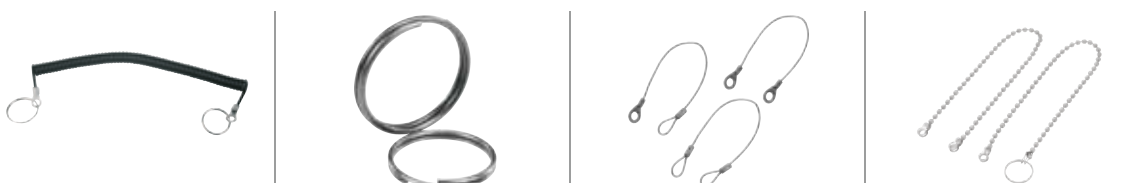


### Product versions:

Length:	100 - 1000 mm
Materials:	steel, stainless steel, aluminum
Versions:	with loop, with crimp terminal, with key ring, safety spiral cable, key rings
Surfaces:	bright, chromed, plastic sheathing

### Product description:

Retaining cables and ball chains are used to secure components. They are available with a loop or key ring.







## Accessories for indexing plungers and cam-action indexing plungers



**Product versions:**

- Materials:** steel, stainless steel, aluminum
- Versions:** bushings, spacer rings, mounting brackets, double-ended ring spanners, locating bushings, ball lock bushings, locking pins, pin
- Surfaces:** black oxidized, hardened and ground, bright

**Product description:**

Accessories include products such as bushings, mounting brackets and spacer rings.



## Spring plunger accessories



**Product versions:**

- Versions:** supports, angle brackets, riser plates, ball catches, magnetic catches, assembly keys, assembly tools, locators

**Product description:**

Assembly tools that make installation easier.





## Ball lock pin accessories



### Product versions:

Materials:	Steel, stainless steel
Versions:	Locating bushings, ball lock bushings with and without twist lock, magnetic bushings, locking pins, pins
Surfaces:	Bright, nickel plated, tempered

### Product description:

Accessories include products such as bushings for ball lock pins.



## Self-aligning pads / thrust screws



### Product versions:

Mount diameter:	Ø 10 - Ø 24 mm, M3 - M24
Ball diameter:	10 - 40 mm
Load rating kN:	0.3 - 220 kN
Ball:	flattened, flat, with serrations, with diamond surface, with polyurethane surface
Inserts:	POM, carbide, stainless steel
Materials:	steel, stainless steel
Versions:	with 12°, 14° or 20° swivel angle, with O-ring, replaceable inserts, self-righting, adjustable, hexagon socket, ball-end thrust screws with head, without head, thrust screws
Surfaces:	bright, tempered and phosphated, tempered and black oxidized

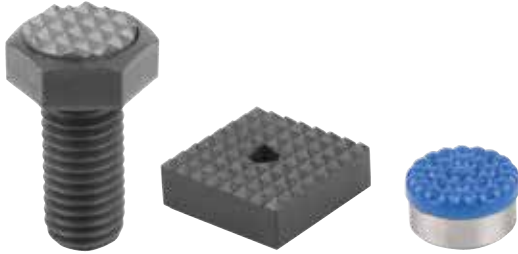
### Product description:

Self-aligning pads are used as supports, stops and thrust pads in machine construction, fixture construction and installation. In addition, they are used to support and clamp workpieces.





## Inserts



### Product versions:

Diameter:	Ø10 - Ø25 mm, M6 - M20
Height:	10 - 12 mm
Length:	25 - 60 mm
Materials:	steel, stainless steel, POM
Versions:	round, square, adjustable, hexagonal
Surface finish:	bright, black oxidized, hardened and bright, hardened and black oxidized, diamond coated, with polyurethane face, with carbide serrations

### Product description:

Inserts are an important component for installing into clamping arms, clamping fixtures, jaw plates and self-aligning pads. They transfer very high torque values and above average retaining forces.



## Locating pins / rest pads

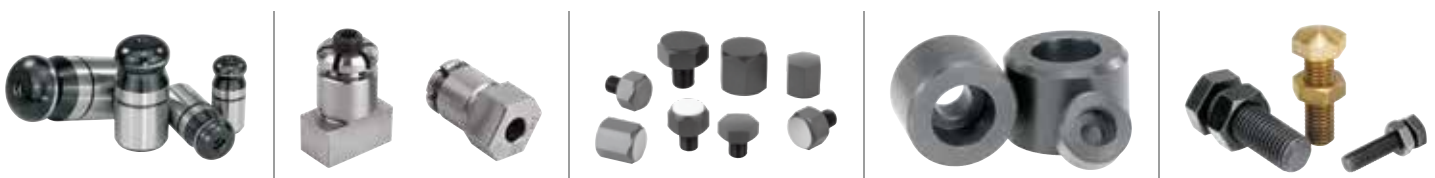


### Product versions:

Adapter diameter:	Ø3 - Ø50 mm, M6 - M20
Length:	4 - 50 mm
Materials:	steel, stainless steel, brass, aluminum
Versions:	with flattened ball-end, cylindrical positioning pins, free-milled, expanding locating pins, with internal thread, locating bushings, positioning feet, fixture feet, pin form with internal/external thread, with positioning pins, locating feet, support bolts, adjustable with locknut, stop screws, adjustable stops with end position feedback, movable clamp stop
Surface finish:	hardened and ground, ground and kolsterised, hardened, case hardened and black oxidized, electro zinc-plated, blue passivated

### Product description:

One of the uses of locating pins is to position workpieces and fixtures. A ball-end helps to ease the fastening process. Rest pads can be used as feet or supports for workpieces and fixtures, depending on the design.





## Height adjustment elements



### Product versions:

Thread Ø:	Ø 4.5 - Ø 33 mm
Min. height:	15 - 105 mm
Max. height:	19 - 144 mm
Power kN:	40 - 323 kN
Materials:	steel, stainless steel
Versions:	with locknut, low version, with spherical levelling washer, spherical washers, conical seats, spherical levelling washers
Surfaces:	bright, blue passivated, zinc-plated

### Product description:

Height adjustment elements are intended for use in integration and in leveling motors, drive units, and assembly lines.



## Positioning and clamping system



### Product versions:

Type:	Ball Lock, pneumatic positioning and clamping system locating adapter, centering clamp, clamping pin, centering bushing
Versions:	Locating cylinder, locating bushing, positioning bushing
Materials:	Steel
Actuation:	Mechanical / pneumatic

### Product description:

The positioning and clamping system allows precise positioning and fastening of tooling and baseplates. The mechanical or pneumatic system consists of a locating cylinder, centering bushing and locating bushing. Easy installation of the system is achieved through self-installation.





## Screws / nuts / washers



### Product versions:

Materials:	Steel, stainless steel, aluminum
Versions:	Eye bolts, grub screws, studs, screws for T-slots, hexagon nuts, captive C-washers, shoulder screws, C-washers, T-thrust screws, cap nuts
Surfaces:	Bright, electro zinc-plated, polished, tempered, black oxidized

### Product description:

Screws, nuts and plates can be used in a variety of applications.



## Threaded Inserts



### Product versions:

External thread:	M8 - M33
Thread length:	8 - 33 mm
Materials:	steel, stainless steel
Versions:	reinforced, solid body, internal thread, self-locking, self-tapping, repair kit
Surfaces:	passivated, bright, zinc-plated

### Product description:

Threaded inserts are particularly quick and easy to install. They enable tapped holes which have been damaged to be repaired.





## Drill bushings



### Product versions:

Outside diameter:	Ø 3 - Ø 62 mm
Length:	6 - 67 mm
Materials:	special case hardened steel
Versions:	cylindrical (DIN 179), with collar (DIN 172)
Surfaces:	hardened and ground

### Product description:

Drill bushings help to guide the drill directly into the drilling jig. Using drill bushings simplifies and optimizes the drilling process.



## Connectors for profiles and profile systems



### Product versions:

Slot width:	6 - 10 mm
Materials:	steel, die-cast
Versions:	nuts, parallel keys, hammer-head screws, connecting sets, fastening sets
Surfaces:	bright, galvanized, tempered and black oxidized

### Product description:

The answer to connecting, clamping and holding aluminum profiles. All components are a perfect match for modern profiles with 8 mm or 10 mm slot widths.





## Accessories for machine and fixture elements



**Product versions:**

- Materials: steel, stainless steel, aluminum
- Versions: shim plates, swing screws, clamping joints, multiple connectors, clevis joints, screw joints for dial gauges, sliding clamps, detent elements
- Surfaces: black anodized, bright, tempered and black oxidized

**Product description:**

Slim plates, sliding clamps, clevis joints, clamping joints and swing screws, detent elements.



## Handles



**Product versions:**

- Thread Ø: M6 - M12, 1/4 - 1/2
- Length: 35 - 150 mm
- Materials: steel, stainless steel
- Surfaces: grips black, bar bright

**Product description:**

Handles are available with various grip types and lengths.







## Shaft collars / locking rings / clamp hubs



### Product versions:

Outside diameter:	7 - 140 mm
Inside diameter:	3 - 100 mm, M4 - M20
Materials:	steel, stainless steel, aluminum
Versions:	with wing grip, with clamping lever, with thread, threaded pin, slotted, separated
Surfaces:	bright, galvanized and blue passivated

### Product description:

Shaft collars and locking rings can be used as a position and stop element for shafts. In contrast, clamp hubs can turn and position shafts with the help of a handle.



## Joints



### Product versions:

Materials:	steel, stainless steel
Versions:	spherical seats, ball studs, rod ends, clevis joints, ball joints, axial joints, quick-fit couplings, cotter pins, spherical bearings, rod-end eyes, snap-in pins, R-clips, circlips
Surfaces:	tempered and phosphated, bright, zinc-plated

### Product description:

In machine construction, vehicle construction and transport technology, joints enable rotary movements, torque created by shafts, and forces to be transmitted and redirected. Alongside clevis joints, this group also includes quick-fit couplings, ball joints and axial joints.





## Magnets raw

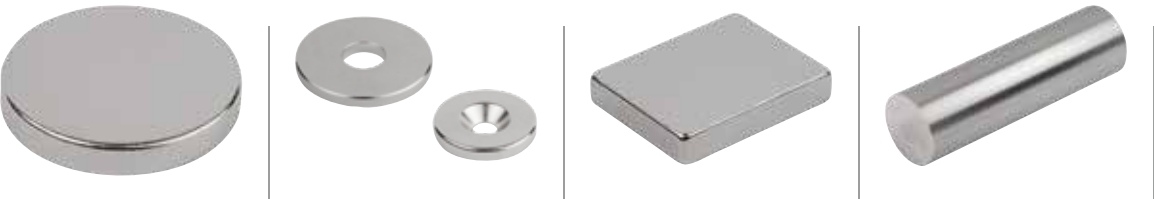


**Product versions:**

Outside diameter:	3 - 56 mm
Length:	10 - 80 mm
Magnetic force N:	1.1 - 125 N
Materials:	neodymium, AlNiCo
Versions:	disc style, block style, bar style
Surfaces:	bright, electro zinc-plated

**Product description:**

Raw magnets are always an unshielded system. All of the magnet's surfaces exert magnetic force.



## Deep pot magnets



**Product versions:**

Diameter:	Ø6 - Ø65 mm
Length:	10 - 85 mm
Magnetic force N:	1.5 - 600 N
Materials:	neodymium (NdFeB), samarium-cobalt (SmCo), aluminum-nickel-cobalt (AlNiCo)
Housing:	steel, brass
Versions:	with fitting tolerance, with pin, with machinable magnetic face, with internal thread
Surface finish:	bright, electro zinc-plated, painted

**Product description:**

Deep pot magnets have a core that is made of a permanent magnetic material. They are a shielded system. Deep pot magnets are easily removable, flexible, non-positive fasteners.





## Shallow pot magnets



### Product versions:

Diameter:	Ø 10 - Ø 125 mm
Height:	4.5 - 26 mm
Magnetic force N:	4 - 1750 N
Materials:	neodymium (NdFeB), samarium-cobalt (SmCo), hard ferrite
Housing:	steel, stainless steel
Versions:	magnets with external/internal thread, with cylinder/counterbore, with hook, protective rubber caps
Surfaces:	galvanized, bright

### Product description:

Shallow pot magnets have a core that is made of a permanent magnetic material. They are a shielded system. Shallow pot magnets are easily removable, flexible, non-positive fasteners.



## Magnets with rubber protective jacket



### Product versions:

Diameter:	Ø 12 - Ø 88 mm
Height:	6 - 20 mm
Magnetic force N:	10 - 420 N
Materials:	neodymium (NdFeB)
Rubber protective jacket:	synthetic rubber
Versions:	magnets with internal/external thread
colors:	black

### Product description:

The magnet is encased in rubber to protect sensitive surfaces.





## Retaining magnets



### Product versions:

Diameter:	Ø 10.5 - Ø 36 mm
Height:	7 - 9 mm
Magnetic force N:	0.7 - 10 N
Materials:	plastic
colors:	white, blue, red, black

### Product description:

On the magnets, the magnetic core is encased in plastic. Their design makes them particularly suitable for use on noticeboards, whiteboards and thin metal sheets.



## Magnets button / horseshoe magnets

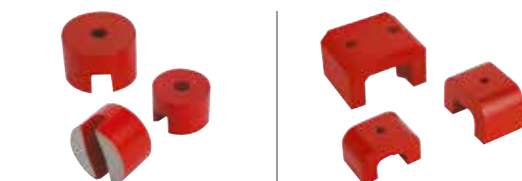


### Product versions:

Diameter:	Ø 13 - Ø 32 mm
Width:	30 - 70 mm
Height:	10 - 41 mm
Magnetic force N:	7 - 320 N
Materials:	Al NiCo
Surfaces:	red painted

### Product description:

This is an unshielded system with a two-part magnetic face. Magnet buttons and strong magnets are easily removable, flexible non-positive fasteners.





## Rubber buffers



### Product versions:

Outside diameter:	Ø8 - Ø125 mm
Thread Ø:	M3 - M16
Thread length:	6 - 42 mm
Thread depth:	3 - 12 mm
Height:	8 - 93 mm
Spring stiffness N/mm:	3.7 - 2240 N/mm
Load N:	17 - 20,000 N
Materials:	steel, stainless steel
Versions:	waisted, suction foot, parabolic, conical, spherical

### Product description:

Rubber buffers are intended to be used as a flexible buffer element and to reduce vibrations.



## Oil level sight glasses



### Product versions:

Thread:	G 1/4-G 2, M14-M40
Materials:	polyamide, aluminum, glass
Versions:	with/ without reflector, can be pressed in, can be screwed in, with glass window, with domed plate
Temperature resistance:	90-150°C

### Product description:

Oil level sight glasses are used in machine construction, vehicle technology and agricultural machinery.





## Screw plugs / press-in plugs

INCH  
Parts



### Product versions:

Standard: DIN 906, DIN 908, DIN 910  
Thread Ø: R 1/8-R 1 1/2, G 1/8-G 2, M8-M48  
Materials: steel, stainless steel, aluminum, plastic  
Versions: with hexagon socket, with hex head, with symbols, with magnet, with dipstick  
Surfaces: galvanized, bright

### Product description:

They are suitable for sealing containers. They are also used where a medium needs to be changed or emptied after a certain period of time.



## Filler necks



### Product versions:

Versions: for pressing in, for screwing on, with/ without chain, with filter, with air and vent valve  
Materials: plastic, steel  
Surfaces: black/red, chrome

### Product description:

Filler necks are predominantly used in machine construction, vehicle technology or agricultural machinery.





## Grease nipples

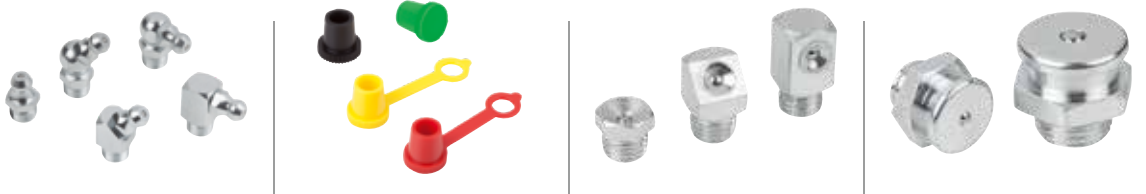


### Product versions:

Versions:	conical head, funnel style, flat type, protective caps
Standard:	DIN 71412, DIN 3404, DIN 3405
Thread Ø:	R 1/8-R 1/4, G 1/8-G 3/8, M6-M16
Style:	hexagonal, square
Materials:	steel, stainless steel, polyethylene
Protective cap colors:	black, yellow, green, red

### Product description:

Grease nipples are used for applying a lubricant directly to a lubrication point. They are available as flush types, as flat types and in a conical style.



## Oil level gauges



### Product versions:

Versions:	with temperature scale, with reflector, long version, with electric oil level monitoring, with electric temperature monitoring, with electric oil level and temperature monitoring
Housing materials:	polyamide, steel, aluminum
Thermometer scale:	0 - 80°C, 0 - 100°C
Temperature resistance:	90°C - 100°C
Pressure resistance:	1 bar -10 bar

### Product description:

Oil level gauges are used to check the current fill level. They are also available with an electronic monitoring option. The oil level gauge is fitted directly into tapped holes or via two fastening holes.







## Vent screws

INCH  
Parts



**Product versions:**

Versions:	with filter, with splash guard, with check valve, with dipstick
Materials:	polyamide 66, brass
Thread Ø:	G1/4-G1 1/2 / M16-M22
Surfaces:	black/red, bright

**Product description:**

Vent screws are used to prevent too much pressure building up in the container. A filter prevents oil escaping without negatively affecting the pressure balance.



## Scales

INCH  
Parts

Rust  
free

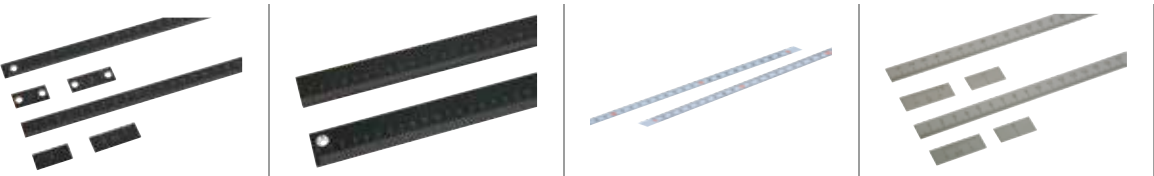


**Product versions:**

Versions:	self-adhesive, with hole, zero mark, vernier
Materials:	aluminum, stainless steel
Length:	250 - 1000 mm, 12" - 40"
Mounting position:	horizontal, vertical
Surface finish:	anodized, painted, bright

**Product description:**

Scales act as position indicators and help to obtain precise readings. They are attached using their self-adhesive back or by using holes.





## Scale rings



**Product versions:**

Material: steel  
Versions: matte-finished chromed, scale marks and figures in black

**Product description:**

Scale rings facilitate adjustment to an exact position.



## Level vials



**Product versions:**

Type: for screwing on, with plastic frame, with bead-edged frame, with cylindrical frame, without frame, tubular bubble levels  
Materials: brass, polymethylmethacrylate, stainless steel, aluminum, polyamide  
Housing/frame Ø: 12-34 mm  
Versions: nickel plated and polished, black, ivory

**Product description:**

Level vials are used as zero indicator instruments or for checking the horizontal position. They are available as bullseye and tubular bubble levels.





## Wheels and rollers



### Product versions:

Type:	Swivel casters, fixed casters, wheels, guide rollers, heavy-load rollers, elevating casters
Rim material:	steel, polypropylene, polyamide, aluminum
Tread material:	solid rubber, steel wire reinforced solid rubber tyres, thermoplastic rubber, polyurethane, extrathane, polyamide, phenoplastic
Wheel diameter:	30 - 250 mm
Permissible load:	20 - 1,350 kg
Versions:	with housing, with plain bearing, with ball bearing, with brake system, heavy-duty types, electrically conductive, welded steel, for hygienic sectors, with bolt hole, with mounting plate, with moulded tread, heat resistant

### Product description:

Casters and wheels are necessary for transporting under a wide variety of conditions.



## Lifting rings



### Product versions:

Type:	ring bolts, ring nuts, swivel ring bolts, D-rings, shackles, load brackets
Thread Ø:	M8 - M36
Permissible load:	0-8500 kg
Materials:	steel, stainless steel
Versions:	4x safety, plastic coated, forged, cast
Colors:	yellow, red, blue

### Product description:

D-rings are used to lift and pull objects. The welding block and bracket are made of steel, a material which is ideally suited to welding. This makes the equipment easy to install.





## Ball transfer units



**Product versions:**

Housing materials:	Steel, stainless steel, plastic
Ball materials:	Steel, stainless steel, POM, polyamide
Housing Ø:	13-100 mm
Ball Ø:	4.8-57 mm
Versions:	With steel housing, with solid steel housing, without housing, undersprung, with felt seal, without felt seal, with lockable ball

**Product description:**

Ball transfer units transport heavy and sensitive goods. The goods can be rotated, positioned and moved in all directions with minimal effort.



## Tools

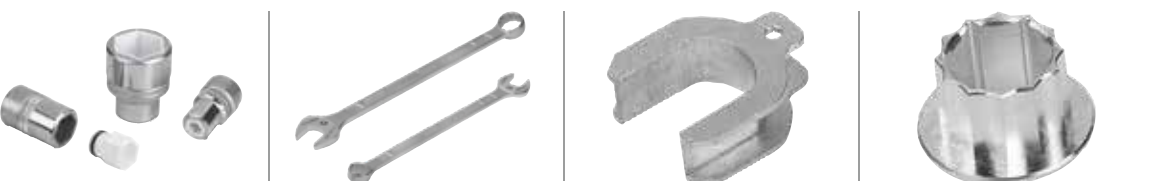


**Product versions:**

Materials:	tool steel, aluminum, plastic
Versions:	NOVOnox hygienic tools, sockets, protective caps for combination, open-ended and ring spanners
Surfaces:	silver, black

**Product description:**

The NOVOnox hygienic product line contains special tools with matching protective inserts and caps, which have been designed for tightening and loosening surface-sensitive fastener elements.







CLAMPING TECHNOLOGY

## Clamping units



- Product versions:**
- Materials: steel, cast, aluminum
- Versions: clamp straps, clamp strap units, riser blocks, connecting screws, power clamp, thrust pads
- Surfaces: galvanized, painted, black oxidized

**Product description:**  
Clamping units are used to clamp workpieces. Various types are available.



## Clamp straps



- Product versions:**
- Materials: steel
- Versions: pin-end clamping, offset, double-sided, movable
- Surfaces: black

**Product description:**  
Clamp straps used in machine and fixture construction and in toolmaking are used to clamp workpieces and components. They are very versatile, made of carbon steel and are available in various designs.





## Hook clamps



<b>Product versions:</b>	
Materials:	Steel
Versions:	with protective insert, elongated clamp strap, with collar, with mounting bracket, ground, hook clamp holder
Surface finish:	black oxidized, ground, tempered

**Product description:**

Notable features of the hook clamps are that they can be used in a wide range of applications and do not require much space. For example, they can be used in the construction of machines, tools and fixtures.



## Swing clamps



<b>Product versions:</b>	
Clamping force N:	800–6000 N
Hand force N:	100–600 N
Materials:	steel, cast iron
Versions:	heavy, mini, pneumatic
Surfaces:	black, green

**Product description:**

Swing clamps are used where the clamping points must be free when the workpiece is loaded or removed. They are actuated manually or pneumatically. They are predominantly used in machine construction, fixture construction and toolmaking. They can be installed either horizontally or vertically.



## Pull and thrust clamps



### Product versions:

Clamping force N:	900 - 8000 N
Retaining force N:	2000 - 14,000 N
Materials:	steel
Versions:	heavy, pneumatic, actima clamping element, clamping pin, clamping screws
Surfaces:	bright, ground, black oxidized, hardened

### Product description:

Pull clamps and thrust clamps are suitable for simultaneously clamping and positioning workpieces. They are actuated manually or pneumatically. Different types can be mounted either horizontally or vertically.



## Side clamps



### Product versions:

Clamping force kN:	3–46 kN
Materials:	steel, cast
Versions:	with rest pad, with support, with riser
Surfaces:	black

### Product description:

Some side clamps hold workpieces in place by rotating a spiral cam which exerts pressure on the swivel jaw, simultaneously producing a positive down force.





## Toe clamps



### Product versions:

Clamping force kN:	2–40 kN
Tightening torque Nm:	2.7–200 Nm
Materials:	steel
Versions:	adjustable, stepped, flat clamps, rack plates, toe clamps
Surfaces:	black

### Product description:

Toe clamps exert a positive down force. Their low height prevents protruding edges.



## Fixture clamps / cam screw clamps



### Product versions:

Materials:	steel, aluminum, plastic, brass
Surface finish:	black oxidized, electro zinc-plated, hardened, brass coated, ground, tempered, anodized
Versions:	fixture clamps, side clamps with cam, form-fit cam clamps, cam screws

### Product description:

Fixture clamps are particularly suitable for clamping workpieces from the side to enable vertical machining. The compact design makes them highly suitable for applications where space is limited.





## T-slot clamps



### Product versions:

Materials:	steel, stainless steel
Versions:	low-profile clamp, flat clamp
Surfaces:	bright, hardened, nickel-plated, black oxidized

### Product description:

T-slot clamps produce a positive down force when the workpiece is clamped. They are suitable for flat workpieces.



## Wedge clamps



### Product versions:

Thread Ø:	M4–M16
Clamping range min.–max.:	12.3–13.1 mm to 101.6–103.9 mm
Clamping force kN:	11–60 kN
Tightening torque Nm:	3–210 Nm
Materials:	steel, aluminum profile
Versions:	double, machinable
Surfaces:	black, anodized

### Product description:

Wedge clamps are suitable for clamping both single and multiple workpieces. Their compact design enables space-saving series clamping.





## Centering clamps



### Product versions:

Clamping force kN:	0.5–45 kN
Tightening torque Nm:	0.7–650 Nm
Materials:	steel, stainless steel
Versions:	with balls, hexagon, internal thread, external thread, mandrel collet, shaft clamping units
Surfaces:	black, bright

### Product description:

These Centering clamps enable workpieces to be centered on and clamped in a bore. The advantages of Centering clamps include precise self-Centering, distortion-free clamping and a low overall height.



## Clamping elements for grid systems



### Product versions:

Actuation:	clamping lever, hexagon
Materials:	steel, stainless steel, POM, die-cast zinc
Surface finish:	black oxidized, plastic coated, phosphated, electro zinc-plated and blue passivated.

### Product description:

These clamping pins are perfect for fixating standard stop elements with various thicknesses to hole grid boards / welding tables with hole Ø 16 mm or 28 mm.





## Locating elements



### Product versions:

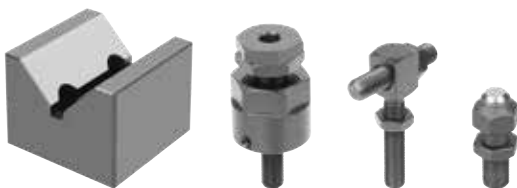
Mount diameter:	Ø 5 - Ø 50 mm
Materials:	steel
Versions:	shoulder screws, removable locating pins, positioning units
Surfaces:	bright, hardened, ground, black oxidized

### Product description:

Locating elements are suitable for positioning workpieces and fixtures. They enable a high degree of repeat accuracy when clamping workpieces.



## Rest and stop elements



### Product versions:

Materials:	Steel, aluminum
Versions:	Adjustable stops, locating supports, V-blocks vertical, V-blocks split, extension columns, supports, seating blocks, inserts, grub screws with thrust pad, positioning units, workpiece supports, workpiece support cylinders, atlas jacks, 5D workpiece stops, wedge supports, self-aligning pads, grippers
Surfaces:	Bright, black oxidized, anodized, tempered, ground, painted

### Product description:

Support and stop elements are suitable for positioning, supporting and securing workpieces and fixtures. They enable a high degree of repeat accuracy when clamping workpieces.





## Form holding systems



### Product versions:

Materials:	steel, aluminum
Versions:	pneumatic, mechanical, external clamping, internal clamping, rectangular
Clamping range:	10 –140 mm
Milling depth:	1–25 mm

### Product description:

Form holding systems are used to clamp workpieces with asymmetrical contours. Systems with pneumatic and mechanical actuation are available. Two different collet types make it possible to clamp workpieces either externally or internally. A high degree of repeat accuracy is achieved due to the collets precise positioning.



## Workpiece stabilizer



### Product versions:

Material:	steel
Versions:	extension shafts, fine adjustment, magnet, fastening sets, clamp strap unit, clamping balls with cup, workpiece stabilizer set with case
Surfaces:	bright, black oxidized
Clamping range:	255 - 1500 mm

### Product description:

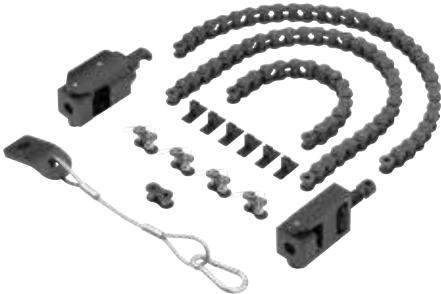
The workpiece stabilizer has been developed specifically to minimize vibrations and oscillations when machining sensitive and thin-walled workpieces. This system is extremely flexible thanks to its different methods of fastening to the workpiece and the machine table.







## Chain clamps



### Product versions:

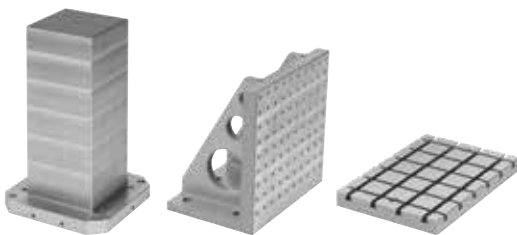
Clamping force:	15 - 40 kN
Material:	Steel
Versions:	Chain clamp sets, roller chains, turnbuckles, prisms

### Product description:

Chain tensioners are used mainly in machine and plant construction. They can be used to clamp cylindrical, unsymmetrical or large / very large workpieces securely and effectively in the simplest and quickest way.



## Basic elements

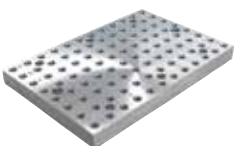


### Product versions:

Materials:	grey cast iron
Variants:	baseplates, grid plates, pallets, clamping cubes, angle plates double-sided, angle plates single-sided, octagonal workholding towers, hexagonal workholding towers
Versions:	with grid holes, without grid holes, with T-slots (grid plates, pallets)
Grid holes:	D12F7/M12, D16F7/M16
Slot widths:	14 H7, 18 H7

### Product description:

Basic elements are essential for workpiece clamping structures. There are various grid system sizes available. They are suitable for all machine tools. Custom-made versions are available on request.



## Add-on elements

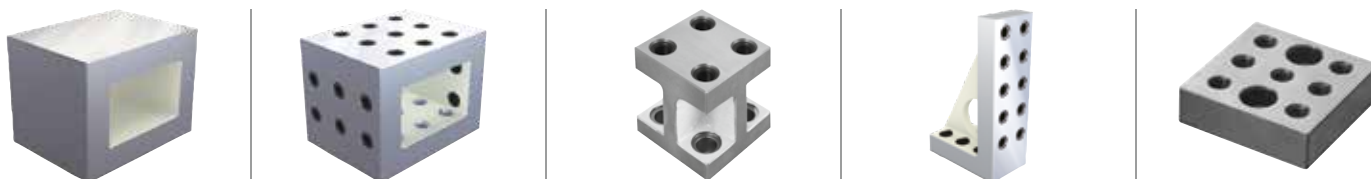


### Product versions:

Versions:	Tombstones, mounting brackets, riser blocks, fastening blocks, precision riser blocks, round positioning plates
Materials:	Cast iron, steel
Grid holes:	D12F7/M12, D16F7/M16
Support height:	25–250 mm

### Product description:

Add-on elements are used as riser elements for clamping workpieces and fixtures. Elements of various heights and designs increase the flexibility of the clamping system.



## Connecting elements, accessories



### Product versions:

Materials:	steel, stainless steel
Surfaces:	tempered, black oxidized, case hardened, chromed, bright
Thread Ø:	M6 - M36
Thread length:	10 - 400 mm

### Product description:

Fastener elements are for positioning and securing components. The hardened and tempered finishes make them very durable. The accessories include elements for connecting, positioning and fastening. There is a wide range of Centering pins, shoulder screws, tapped and locating bushings.





## Positioning and clamping system



### Product versions:

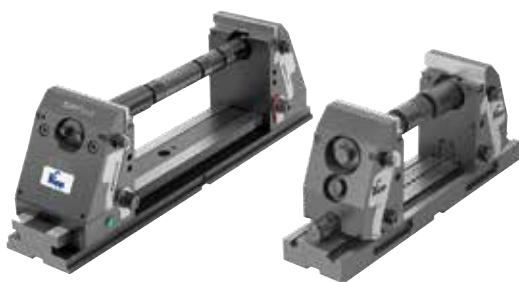
Type:	Ball Lock, pneumatic positioning and clamping system locating adapter, Centering clamp, clamping pin, Centering bushing
Versions:	Locating cylinder, locating bushing, positioning bushing
Materials :	Steel
Actuation:	Mechanical / pneumatic

### Product description:

The positioning and clamping system allows precise positioning and fastening of tooling and baseplates. The mechanical or pneumatic system consists of a locating cylinder, Centering bushing and locating bushing. Easy installation of the system is achieved through self-installation.



## KIPPflexX 5-axis vices 5-axis clamping system compact



### Product versions:

Types:	5-axis vice KIPPflexX, 5-axis vice compact
Versions:	jaws, seating ledges, extension shafts, adapter shafts, baseplates, clamping pins, cylinder clamping set, couplings for cross-clamping, stop sets, claw clamp sets, pendulum jaws, middle jaws, torque wrench
Material:	steel
Clamping range:	20 - 780 mm
Jaw width:	90 - 125 mm
Clamping height:	150, 155, 180 mm

### Product description:

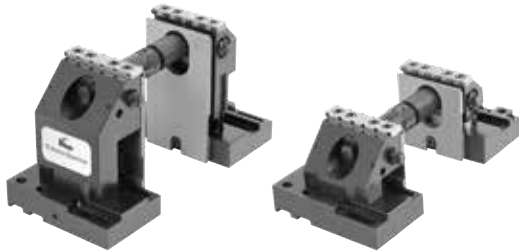
The KIPPflexX 5-axis vice is distinguished by its high stability, flexibility, and user-friendliness. This 5-axis vice can be used either as a centric vice or standard vice. When clamping workpieces, the operator can decide whether or not centric clamping is suitable.





## 3-axis vices / 5-axis vices

### Product versions:



Type:

3-axis vice, 5-axis vice

Versions:

Riser plates, seating blocks, draw-down jaws, jaw adapters for round workpieces, extension shaft jaw pins, stop set, standard jaw plates, blank jaw plates, T-slot plates, fastening set, torque wrench

Materials:

Steel

Clamping width:

22–236 mm (22–1000 mm)

Clamping height:

100, 105, 125, 150, 175, 200, 225, 250 mm

Jaw width:

100 mm

For grid spacing:

40 mm, 50 mm

For grid holes:

D12F7/M12, D16F7/M16

For slot spacing:

63, 80, 100, 125 mm

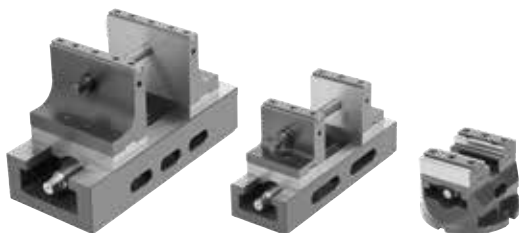
### Product description:

The 5-axis clamping system enables machining free of protruding edges and vibration, with extremely high cutting and feed forces. It enables the use of extremely short tools in order to guarantee the required tolerances and finishes. It can vary in height from 100 to 250 mm.



## Centric vices

### Product versions:



Type:

Centric vice

Versions:

Attachment stepped jaws, attachment stepped jaws for 5-axis machining, inserts for stepped jaws, screw-on jaws, prism jaws, jointed stops, baseplates

Materials:

Steel

Jaw width:

65 mm, 80 mm, 125 mm

Baseplate length:

113 mm, 202 mm, 316 mm

Clamping range:

0–55 mm, 6–161 mm, 6–276 mm

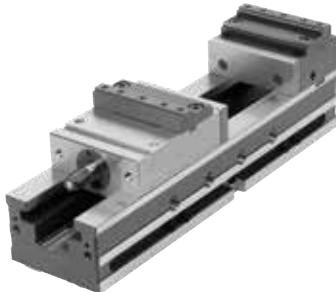
### Product description:

Centric vices are especially suitable for clamping tasks in which workpiece clamping is positioned centrally. Centric vices are equipped with an interface for zero-point clamping systems, an interface for handling systems (suitable for automation) and an adapter plate for grid systems as standard.





## NC vices



### Product versions:

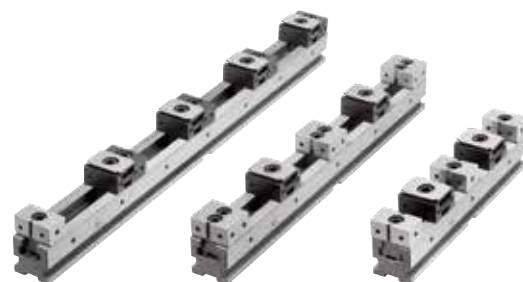
Type:	NC vice
Versions:	Draw-down jaws, attachment stepped jaws, prism jaws, angle drives
Materials:	Steel
Jaw width:	125 mm
Clamping range:	0–239 mm
Baseplate length:	470 mm
Overall length:	Max. 564 mm
For slot spacing:	63 mm and 100 mm

### Product description:

NC vices are highly versatile pieces of equipment for clamping tasks. As the clamping range can be pre-adjusted quickly using a locking pin, the NC vice can be modified to fit various workpiece sizes in a short time. A wide variety of jaw plates ensures that the workpiece can be placed in the ideal clamping position.



## Multi-clamping system



### Product versions:

Type:	Multi-clamping system
Versions:	Clamping rails, short clamping rails, wedge clamps, wedge clamps with fixed jaws, fixed jaws ES, fixed jaws DS, seating ledges, machinable attachment jaws, prism jaws, workpiece stops, spacers, claw clamp sets, T-slot keys, assemblies
Materials:	Steel
Thread Ø:	M12, M16
Fastening holes:	25H6, 16H6, 12F7, 16F7
Lengths:	130 - 700 mm
Widths:	50, 72, 100 mm

### Product description:

This clamping system can be used to clamp a number of workpieces at the same time. This makes it suitable for larger batch sizes. Different elements, such as base rails, stops and wedge clamps, make it possible to clamp workpieces of various sizes.





## Stationary chuck



**Product versions:**

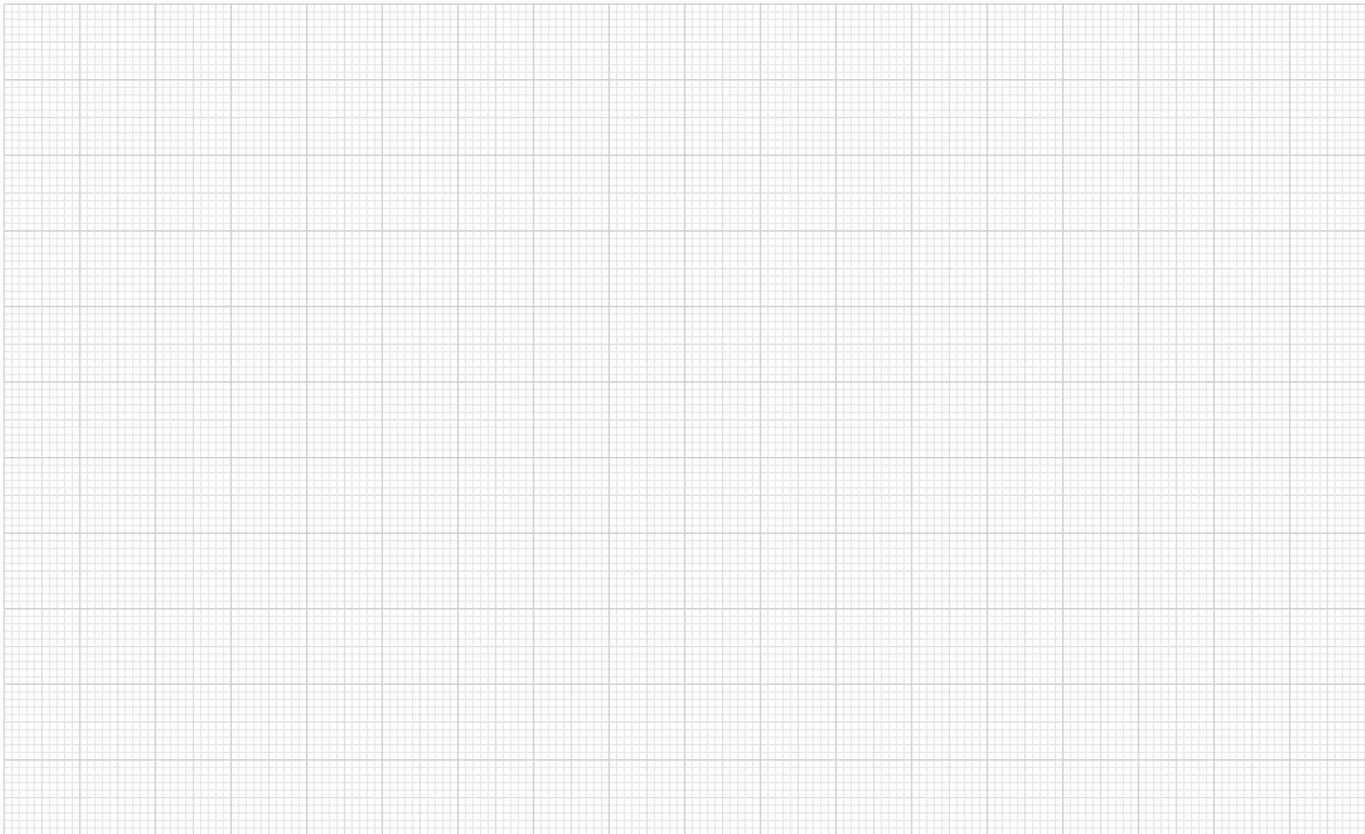
Type:	Stationary jaw chuck
Design:	3-jaw chuck, 4-jaw chuck, jaws soft
Material:	steel
Clamping range:	4 - 300 mm

**Product description:**

Stationary jaw chucks are particularly suitable for centric workpiece clamping on drilling and milling machines. Due to the flexible arrangement of the clamping jaws in hard and soft design, workpieces with different sizes and shapes can be clamped from the inside or outside without any problems.



## Notes









SPECIAL SOLUTIONS

# SPECIAL SOLUTIONS

HEINRICH KIPP WERK has high vertical integration. This is why we can produce special-solution assemblies and single items at any time that exactly suit customer specifications.

**Cam action indexing plunger:**

The engagement element was specially developed for the height adjustment of a tool carrier system. Stainless steel version in A4 quality.

**Indexing plunger:**

This is a special positioning part for machine construction. The turned parts (sleeve and pin) are made of high-tensile, hardened steel. The aluminum mushroom knob is blue anodized.

**Tension lever:**

This special colored version of the grip is used on medical equipment. Depending on the function, it is labelled with 3D icons. Ergonomics and design guarantee an optimal match to the control panel interface.

In our machine shop are metal cutting, injection molding and zinc die-casting machines. Our own R&D department and toolmaking workshop ensure a professional realization of special projects.

Completely assembled and, if desired, with treated surface. Technicians accompany every single project-from offer preparation to feasibility assessment and through to completion.



Development/design



Toolmaking



Machining



Zinc die-casting



Plastic injection molding



Surface treatment



Assembly





**KIPP Inc.**

4305 N. Roosevelt Road  
Stevensville, MI 49127

Tel. (269) 932-1100

Fax (269) 932-1015

[us.info@kipp.com](mailto:us.info@kipp.com)

[www.kippusa.com](http://www.kippusa.com)

**KIPP Ltd.**

6155 Tomken Road, Unit #18

Mississauga, ON, L5T 1X5

Tel (647) 862-7274

[ca.info@kipp.com](mailto:ca.info@kipp.com)

[www.kippcanada.ca](http://www.kippcanada.ca)



WE01ENPR2305US