

## Clamping angle style B, with adjustable handle

### Item description/product images



### Description

#### Material:

Clamping angle die-cast zinc.

Handle die-cast zinc DIN EN 12844.

Metal parts stainless steel 1.4305 (AISI 303 equivalent).

#### Version:

Clamping angle painted aluminum tone.

Handle powder-coated.

Stainless steel bright.

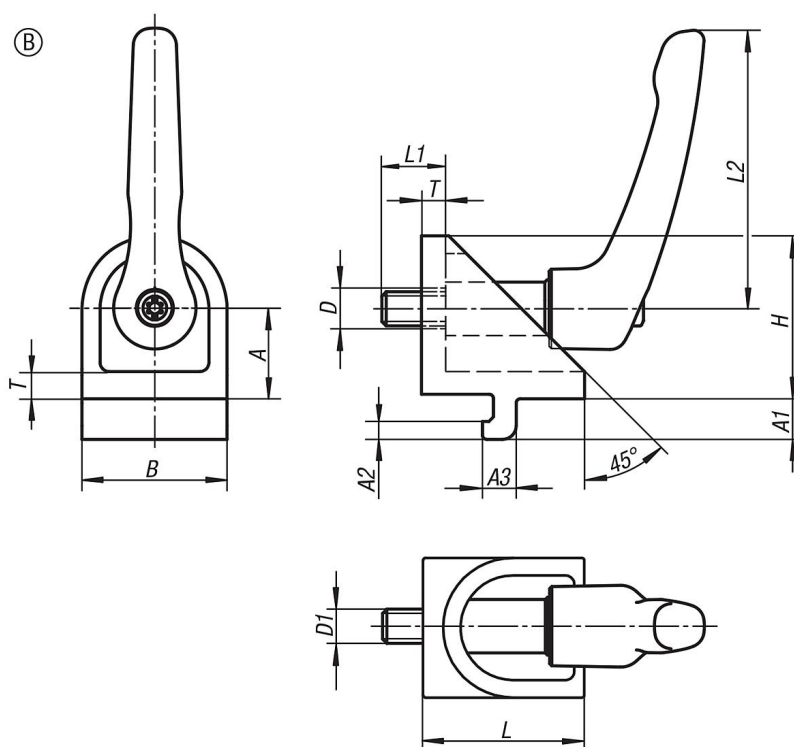
#### Note:

The clamping angles are used for connecting two profiles of the same series that have contact on the side faces and cross at any angle.

Loosening the screw releases both clamps allowing free rotation and sliding along the slots.

The clamping angles are generally used in pairs or in combination with a joint angle.

### Drawings



Order No.	Type	Slot width	style	Version 1	A	A1	A2	A3	B	D	D1	H	H1	H2	L	L1	L2	T
K1049.0606	I	6	B	with adjustable handle	15	6,3	3	5,7	24	7	M6	27	-	-	27	13	40	5
K1049.0808	I	8	B	with adjustable handle	20	9	4	7,5	32	9	M8	36	-	-	36	18	65	6

