

Rod ends with plain bearing, external thread, steel, DIN ISO 12240-1, can be re-lubricated

Item description/product images



Description

Material:

Housing size (D) 5-12, turned free-cutting steel. From size (D) 16, forged Q&T steel. Ball joint: roller bearing steel, hardened, ground and polished. Bearing shell free-cutting steel with grease nipple.

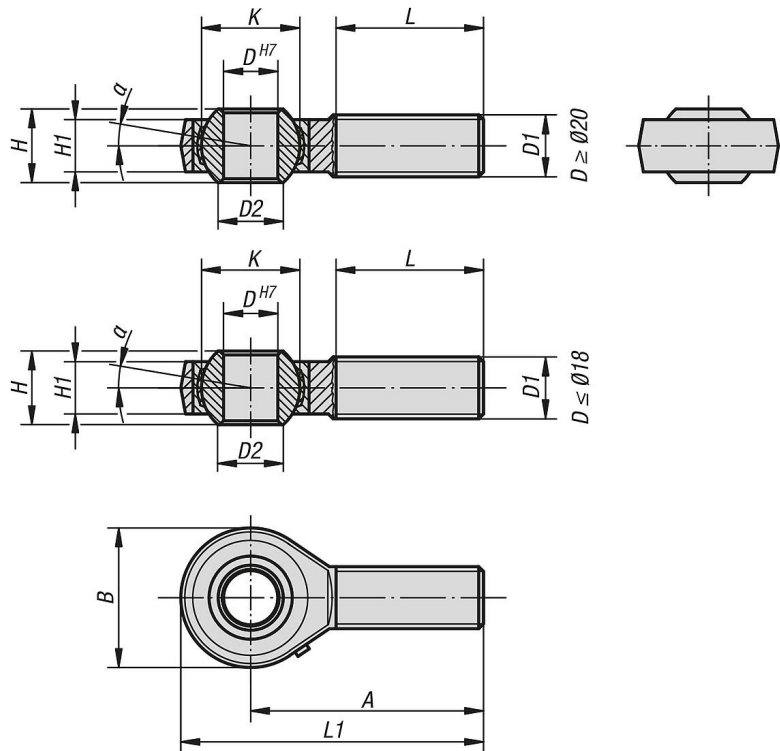
Version:

Electro zinc-plated.

Note:

The plain bearings on these rod ends can be re-lubricated. The connection dimensions comply with DIN 648 Style Series KA.

Drawings



Rod ends with plain bearing, external thread, steel, DIN ISO 12240-1, can be re-lubricated

Order No.	Version 2	Main material	A	B	D	D1=Thread	D2	H	H1	K	L	L1	α	Dynamic base loads kN	Static base loads kN
K2085.05	rh thread	free-cutting steel	33	16	5	M5x0,8	7,7	8	6	11,11	20	41	13	3,25	5,7
K2085.06	rh thread	free-cutting steel	36	18	6	M6x1,0	8,96	9	6,75	12,7	22	45	13	4,3	7,2
K2085.08	rh thread	free-cutting steel	42	22	8	M8x1,25	10,4	12	9	15,875	25	53	14	7,2	11,6
K2085.10	rh thread	free-cutting steel	48	26	10	M10x1,5	12,9	14	10,5	19,05	29	61	13	10	14,5
K2085.12	rh thread	free-cutting steel	54	30	12	M12x1,75	15,4	16	12	22,225	33	69	13	13,4	17
K2085.14	rh thread	carbon steel	60	34	14	M14x2,0	16,9	19	13,5	25,4	36	77	16	17	24
K2085.16	rh thread	carbon steel	66	40	16	M16x2,0	19,4	21	15	28,575	40	86	15	21,6	28,5
K2085.18	rh thread	carbon steel	72	44	18	M18x1,5	21,9	23	16,5	31,75	44	94	15	26	42,5
K2085.20	rh thread	carbon steel	78	50	20	M20x1,5	24,4	25	18	34,925	47	103	14	31,5	52,5

Rod ends with plain bearing, external thread, steel, DIN ISO 12240-1, can be re-lubricated

Order No.	Version 2	Main material	A	B	D	D1=Thread	D2	H	H1	K	L	L1	α	Dynamic base loads kN	Static base loads kN
K2085.22	rh thread	carbon steel	84	54	22	M22x1,5	25,8	28	20	38,10	51	11	15	38	57
K2085.25	rh thread	carbon steel	94	60	25	M24x2,0	29,6	31	22	42,86	57	124	15	47,5	68
K2085.30	rh thread	carbon steel	110	70	30	M30x2,0	34,8	37	25	50,8	66	145	17	64	88
K2085.051	lh thread	free-cutting steel	33	16	5	M5x0,8	7,7	8	6	11,11	20	41	13	3,25	5,7
K2085.061	lh thread	free-cutting steel	36	18	6	M6x1,0	8,96	9	6,75	12,7	22	45	13	4,3	7,2
K2085.081	lh thread	free-cutting steel	42	22	8	M8x1,25	10,4	12	9	15,875	25	53	14	7,2	11,6
K2085.101	lh thread	free-cutting steel	48	26	10	M10x1,5	12,9	14	10,5	19,05	29	61	13	10	14,5
K2085.121	lh thread	free-cutting steel	54	30	12	M12x1,75	15,4	16	12	22,225	33	69	13	13,4	17
K2085.141	lh thread	carbon steel	60	34	14	M14x2,0	16,9	19	13,5	25,4	36	77	16	17	24
K2085.161	lh thread	carbon steel	66	40	16	M16x2,0	19,4	21	15	28,575	40	86	15	21,6	28,5
K2085.181	lh thread	carbon steel	72	44	18	M18x1,5	21,9	23	16,5	31,75	44	94	15	26	42,5
K2085.201	lh thread	carbon steel	78	50	20	M20x1,5	24,4	25	18	34,925	47	103	14	31,5	52,5
K2085.221	lh thread	carbon steel	84	54	22	M22x1,5	25,8	28	20	38,10	51	11	15	38	57
K2085.251	lh thread	carbon steel	94	60	25	M24x2,0	29,6	31	22	42,86	57	124	15	47,5	68
K2085.301	lh thread	carbon steel	110	70	30	M30x2,0	34,8	37	25	50,8	66	145	17	64	88