

Plastic cylindrical grips, fold-away - inch

Item description/product images

INCH
Parts



Description

Product description:

Cylindrical grips are supplied assembled and can be screwed onto handwheels, crank handles, etc.

The grooves and conical shape ensure that the cylindrical grips have optimised haptics and good grip.

The fold-down grip prevents protruding edges, which also minimizes the risk of injury.

Material:

Grip, thermoplastic.

Center pin, steel.

Version:

Grip, black.

Steel parts, black oxidized.

Note:

The hole D3 is used for positioning.

Benefits:

Optimised haptics and good grip

Protruding edges prevented

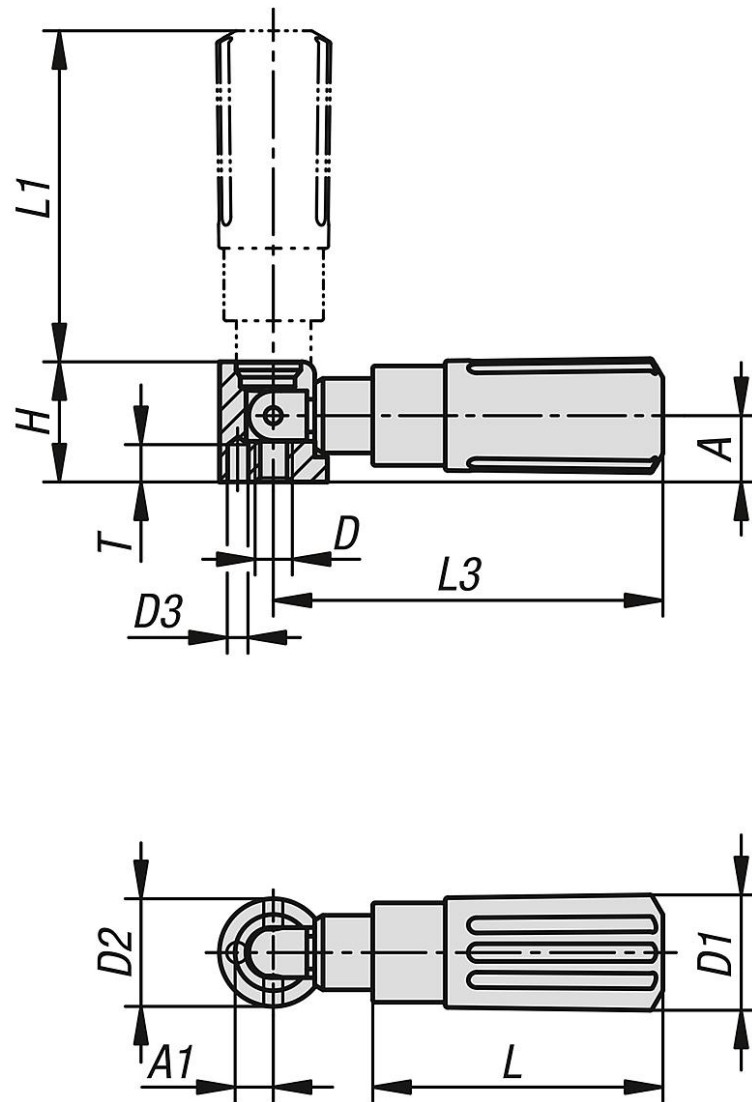
Grips for handwheels and cranks

Various thread sizes

NOVO grip KIPP design

Plastic cylindrical grips, fold-away - inch

Drawings



Cylindrical grips, plastic fold-down

Order No.	Component material	Size	A	A1	D	D1	D2	D3	H	L	L1	L3	T
K1469.1AE	steel	1	8	4,3	8-32	14	13	2,5	14,5	35	40	47	4,5
K1469.2A1	steel	2	10	5,3	10-32	16	16	3,5	18	44	49	58	4,5
K1469.3A2	steel	3	12,5	6,5	1/4-20	20	20	4,5	22,5	55	59,5	71,5	6
K1469.4A3	steel	4	16	9	5/16-18	25	26	5,5	29	70	83	98	6,5