

## Plastic cylindrical grips, revolving, with internal thread - inch

Item description/product images

INCH  
Parts



### Description

#### Product description:

Cylindrical grips are supplied assembled and can be screwed onto handwheels, crank handles, etc.  
The grooves and conical shape ensure that the cylindrical grips have optimised haptics and good grip.

#### Material:

Grip, thermoplastic.  
Center pin, steel.

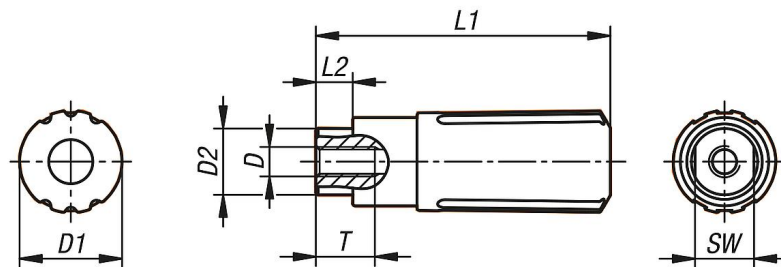
#### Version:

Grip, black.  
Steel parts, black oxidized.

#### Benefits:

Optimised haptics and good grip  
Grips for handwheels and cranks  
Various thread sizes  
NOVO grip KIPP design

### Drawings



Order No.	Thread type	Component material	Size	D	D1	D2	L1	L2	T	SW
K1468.11AE	internal thread	steel	1	8-32	14	9	40	5	8	8
K1468.12A1	internal thread	steel	2	10-32	16	11	49,1	5,1	10	10
K1468.13A2	internal thread	steel	3	1/4-20	20	14	61,4	6,4	12	12
K1468.14A3	internal thread	steel	4	5/16-18	25	18	82,5	12,5	16	15

