

## Spring plungers with slot and thrust pin, standard spring force, with thread lock - inch

Item description/product images

INCH  
Parts

KIPPlack



### Description

#### Material:

Sleeve in steel grade 5.8;  
thrust pin in steel.  
Spring grade D spring steel wire.

Thread lock nylon.

#### Version:

Black oxidized.  
Thrust pin hardened.

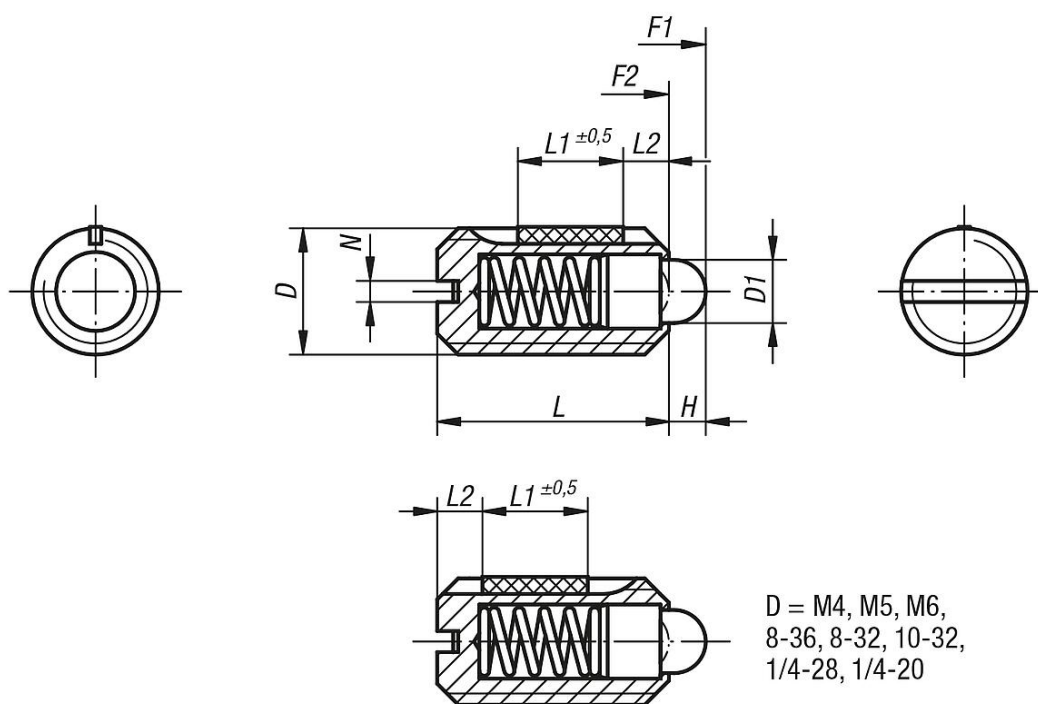
#### Note:

For the inch series, dimension D is in inches, all other dimensions are in mm.

#### Drawing reference:

L2 = approx. 2x thread pitch

### Drawings



D = M4, M5, M6,  
8-36, 8-32, 10-32,  
1/4-28, 1/4-20

Item No.	D	D1	H	L	L1	N	Spring force initial pressure F1 approx. N	Spring force final pressure F2 approx. N	Tightening torque approx. Nm	Loosening torque approx. Nm
K0323.A3	5/16-18	4	2	16	8	1,2	15	30	1,1	0,38
K0323.A1	10-32	2,4	2	12	6	0,8	6	20	0,12	0,08
K0323.A5	1/2-13	6	3,5	22	10	2	30	55	2,11	1,41
K0323.AJ	1/4-28	2,7	2	14	7	1	7	20	0,44	0,21
K0323.AG	8-36	1,8	1,5	9	5	0,6	6	20	0,18	0,12
K0323.A4	3/8-16	4,5	2,5	19	9	1,6	20	35	1,36	0,62
K0323.A6	5/8-11	8,5	4,5	24	14	2,5	45	100	3,95	3,05

**Spring plungers with slot and thrust pin, standard spring force, with thread lock - inch**

Item No.	D	D1	H	L	L1	N	Spring force initial pressure F1 approx. N	Spring force final pressure F2 approx. N	Tightening torque approx. Nm	Loosening torque approx. Nm
<b>K0323.AE</b>	8-32	1,8	1,5	9	5	0,6	6	20	0,18	0,12
<b>K0323.A2</b>	1/4-20	2,7	2	14	7	1	7	20	0,44	0,21