

Indexing plungers with grip, style C - inch

Item description/product images

INCH
Parts



Description

Material:

Steel grade 5.8.

Version:

Black oxidized.
Pin hardened and ground.

Note:

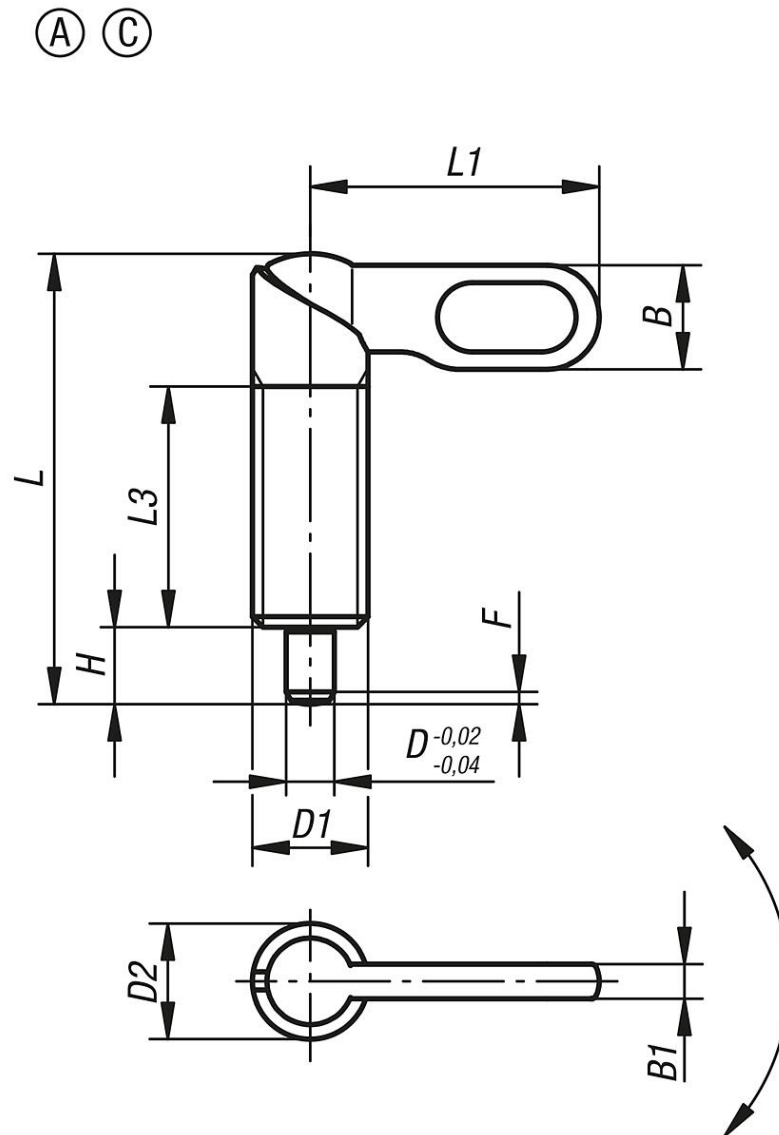
Cam-action indexing plungers are used when the indexing pin should not project all the time. Turning the handle through 180° retracts the pin and a notch ensures that the handle remains in this position.

Drawing reference:

Style C: grip powder-coated without nut
Style D: grip powder-coated with nut

Indexing plungers with grip, style C - inch

Drawings



Order No.	style	D	D1	D2	L	L1	L3	B	B1	H	Fx30°	Spring force initial pressure F1 approx. N	Spring force final pressure F2 approx. N
K0348.0604A4	C	4	3/8-16	10	38	25	20	9	3	6	1	8	14
K0348.0605A4	C	5	3/8-16	10	38	25	20	9	3	6	1,3	8	14
K0348.0606A4	C	6	3/8-16	10	38	25	20	9	3	6	1,8	8	14
K0348.0604AL	C	4	3/8-24	10	38	25	20	9	3	6	1	8	14
K0348.0605AL	C	5	3/8-24	10	38	25	20	9	3	6	1,3	8	14
K0348.0606AL	C	6	3/8-24	10	38	25	20	9	3	6	1,8	8	14
K0348.0605A5	C	5	1/2-13	12	46,8	30	25	10,8	3,6	8	1,3	8	15
K0348.0606A5	C	6	1/2-13	12	46,8	30	25	10,8	3,6	8	1,8	8	15
K0348.0608A5	C	8	1/2-13	12	46,8	30	25	10,8	3,6	8	2,3	8	15
K0348.0605AM	C	5	1/2-20	12	46,8	30	25	10,8	3,6	8	1,3	8	15
K0348.0606AM	C	6	1/2-20	12	46,8	30	25	10,8	3,6	8	1,8	8	15
K0348.0608AM	C	8	1/2-20	12	46,8	30	25	10,8	3,6	8	2,3	8	15
K0348.0606A6	C	6	5/8-11	16	60,4	40	32	14,4	4,8	10	1,8	15	35
K0348.0608A6	C	8	5/8-11	16	60,4	40	32	14,4	4,8	10	2,3	15	35
K0348.0610A6	C	10	5/8-11	16	60,4	40	32	14,4	4,8	10	2,8	15	35
K0348.0606AN	C	6	5/8-18	16	60,4	40	32	14,4	4,8	10	1,8	15	35
K0348.0608AN	C	8	5/8-18	16	60,4	40	32	14,4	4,8	10	2,3	15	35
K0348.0610AN	C	10	5/8-18	16	60,4	40	32	14,4	4,8	10	2,8	15	35

Indexing plungers with grip, style C - inch

Order No.	style	D	D1	D2	L	L1	L3	B	B1	H	Fx30°	Spring force initial pressure F1 approx. N	Spring force final pressure F2 approx. N
K0348.0608A7	C	8	3/4-10	20	70	50	35	18	6	12	2,3	20	60
K0348.0610A7	C	10	3/4-10	20	70	50	35	18	6	12	2,8	20	60
K0348.0612A7	C	12	3/4-10	20	70	50	35	18	6	12	3	20	60
K0348.0608A0	C	8	3/4-16	20	70	50	35	18	6	12	2,3	20	60
K0348.0610A0	C	10	3/4-16	20	70	50	35	18	6	12	2,8	20	60
K0348.0612A0	C	12	3/4-16	20	70	50	35	18	6	12	3	20	60